

BLONDES



Light Blonde (N)
Cool Pale Blonde
Color Code: 601
Salon Color Level: 10N



Vanilla Butter (W)
Warm Light Blonde with Highlights
Color Code: 234/23C
Salon Color Level: 10G



Medium Blonde (N)
Sandy Blonde
Color Code: 26/23
Salon Color Level: 8N



Frosted (N)
Chestnut with Wheat Tips
Color Code: 234/18T
Salon Color Level: 8NA

KEY

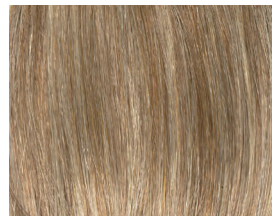
- (C): Cool
- (N): Neutral
- (W): Warm
- (R): Rooted



Ginger Cream (C)
Cool Light Blonde with Highlights
Color Code: 41AE/613
Salon Color Level: 9NA



Sparkling Champagne (N) (R)
Rooted Neutral Light Blonde
Color Code: 26/23/14 R8
Salon Color Level: 9N



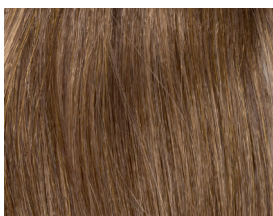
Dark Blonde (C)
Neutral Dark Blonde with Highlights
Color Code: 16/23
Salon Color Level: 7N



Almond Breeze (C)
Cool dark Blonde with Highlights
Color Code: 18/22
Salon Color Level: 8NA



Golden Nutmeg (W) (R)
Rooted Warm Dark Blonde with Highlights
Color Code: 27/26/23 R8
Salon Color Level: 8G



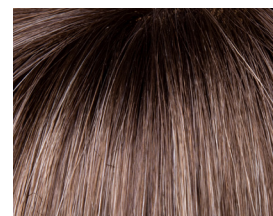
Mocha Frost (C)
Cool Medium Blonde with Highlights
Color Code: 18/26
Salon Color Level: 8NA



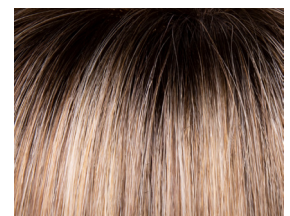
Creamed Coffee (W) (R)
Rooted Warm Dark Blonde
Color Code: 27/8/33 R4
Salon Color Level: 8G



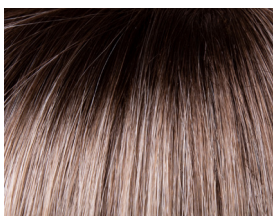
Honey Breeze (N) (R)
Rooted Pale Silver Blonde
Color Code: 10/24 R2
Salon Color Level: 7N



Sahara Blonde (N) (R)
Rooted Neutral Medium Blonde
Color Code: 14/26 R8
Salon Color Level: 8N



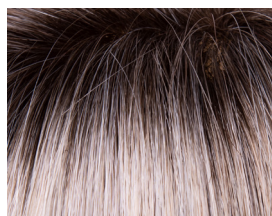
Butterscotch Shadow (W) (R)
Rooted Warm Medium Blonde
Color Code: 12/23 R4
Salon Color Level: 8G



Champagne Shadow (N) (R)
Rooted Pale Golden Blonde
Color Code: 14/613 R8
Salon Color Level: 10WB



Golden Sandstone (N) (R)
Rooted Cool Medium Blonde
Color Code: 41 R2
Salon Color Level: 8NA



Silty Beige (N) (R)
Rooted Pale Beigy Blonde
Color Code: 26/101 R8
Salon Color Level: 10N



Platinum Shadow (C) (R)
Rooted Pale Platinum Blonde
Color Code: 613 R8
Salon Color Level: 10P

REDS



Lighter Red (W)
Lighter Copper Red
Color Code: 29/26
Salon Color Level: 8C



Chocolate Cherry (W) (R)
Rooted Dark Red
Color Code: 130/10 R4
Salon Color Level: 5R



Dark Red (W)
Darker Mahogany Red
Color Code: 33/32
Salon Color Level: 6R

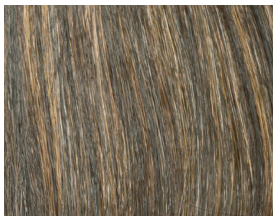


Cinnamon Raisin (W)
Rich Auburn
Color Code: 6/33/27
Salon Color Level: 5RB

KEY

- (C): Cool
- (N): Neutral
- (W): Warm
- (R): Rooted

BROWNS



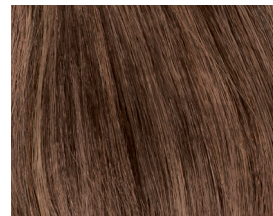
Chocolate Caramel (W)
Dimensional Medium Brown
Color Code: 8/29
Salon Color Level: 6N



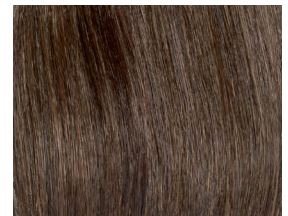
Toasted Sesame (C) (R)
Rooted Cool Light Brown
with Highlights
Color Code: 12/24 R8
Salon Color Level: 7NB



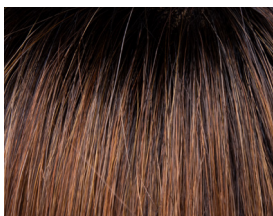
Amaretto Cream (N) (R)
Rooted Brunette with
Highlights
Color Code: 4/6/14 R4
Salon Color Level: 5N



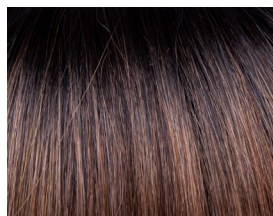
Light Brown (N)
Neutral to Warm Brown
Color Code: 12/23
Salon Color Level: 6N



Medium Brown (N)
Cool Brown
Color Code: 10
Salon Color Level: 5N



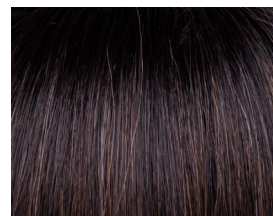
Saffron Spice (W) (R)
Rooted Warm Light Brown
with Lowlights
Color Code: 24/33/35 R2
Salon Color Level: 7WG



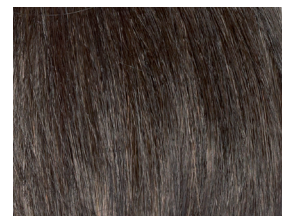
Cinnamon Toffee (W) (R)
Rooted Light Brown
Color Code: 12/27 R2
Salon Color Level: 7G



Macchiato (N) (R)
Rooted Brunette
Color Code: 8/14 R4
Salon Color Level: 6NG

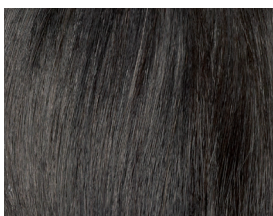


Espresso (N) (R)
Rooted Cool Brunette
Color Code: 10 R2
Salon Color Level: 6NB



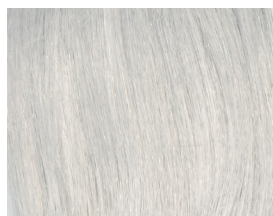
Dark Brown (N)
Dark Brown
Color Code: 4
Salon Color Level: 3N

BLACK

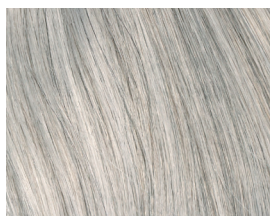


Black (N)
Soft Black
Color Code: 1B
Salon Color Level: 1N

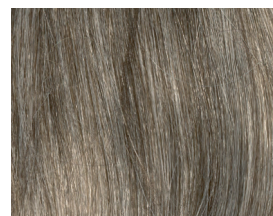
GREYS



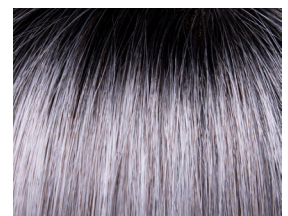
Light Grey (C)
Platinum
Color Code: 60
Salon Color Level: 11+



Medium Grey (C)
Salt and Pepper
Color Code: 56
Salon Color Level: 9+



Dark Grey (N)
Light Brown with Grey
Color Code: 38
Salon Color Level: 7NA



Sterling Shadow (C) (R)
Rooted Pale Silver Blonde
Color Code: 56 R8
Salon Color Level: 10+