

PLUS
8
new
toppers

Discover
EnvyHair's
1 STYLE/3 LOOKS
how-to videos at
envywigs.com

INTRODUCING

3 NEW STYLES

(And Endless New Looks)

 envyhair™
BY ALAN EATON

30% HUMAN HAIR. 70% SYNTHETIC HAIR. 100% YOU.™

**Blow-Dry It.
Curl It.
Hot Iron It.
OWN IT!**

Priced about 1/3 less than 100% human hair products, our exclusive, heat-friendly EnvyHair™ blend looks, feels, moves, and styles just like the real thing. And lasts even longer. Its built-in moisture-control withstands temperatures up to 285°F (120°C) and far exceeds other heat-friendly wigs. Making it easy to make our 3 NEW on-trend styles your own.

“With its combination of advanced stylability, durability and affordability, EnvyHair™ isn’t just the best of both worlds. It opens up a whole new one.”

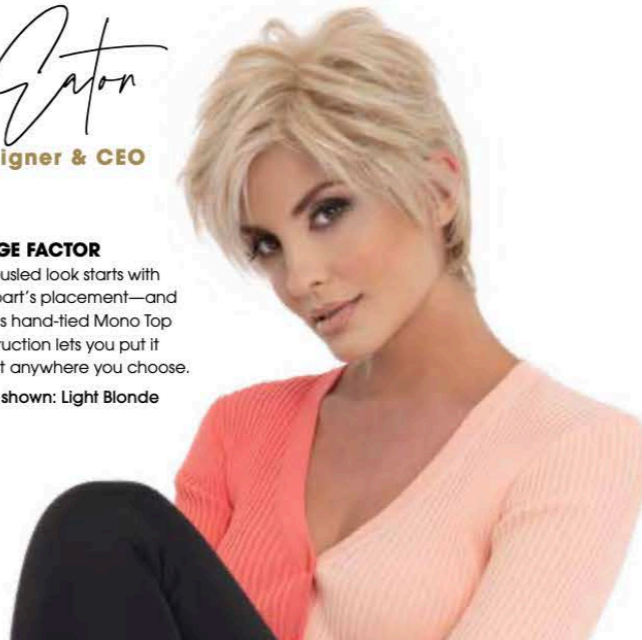
Alan Eaton
Alan Eaton, Designer & CEO

2

FRINGE FACTOR

This tousled look starts with your part’s placement—and ENVY’s hand-tied Mono Top construction lets you put it almost anywhere you choose.

Color shown: Light Blonde



1 **OUT of THE BOX**

CASUAL CROP

It’s ENVY’s unique hand-tied Mono Top construction that gives this asymmetric cut its believable volume and movement. And EnvyHair™ that gives you the freedom to style it.

Color shown:
Chocolate Caramel

PAULA

Head size: Average
Construction: Ear-to-Ear Lace Front, Mono Top, Wefted Sides and Back
Front: 4.5"
Crown: 4.5"
Side: 3.25"
Nape: 2.25"
Weight: 2.43 oz. (68.90 g.)

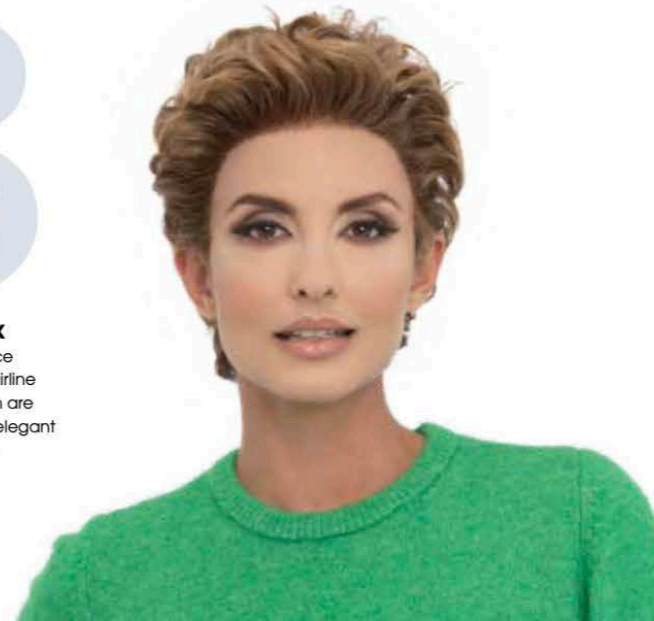
Paula
1 STYLE 3 LOOKS

3

BRUSHED BACK

Our Ear-to-Ear Lace Front’s invisible hairline AND a curling iron are the secret to this elegant off-the-face style.

Color shown:
Toasted Sesame



**“THE
BEST
FEELING
FIBERS
I’VE
EVER
HAD.”**

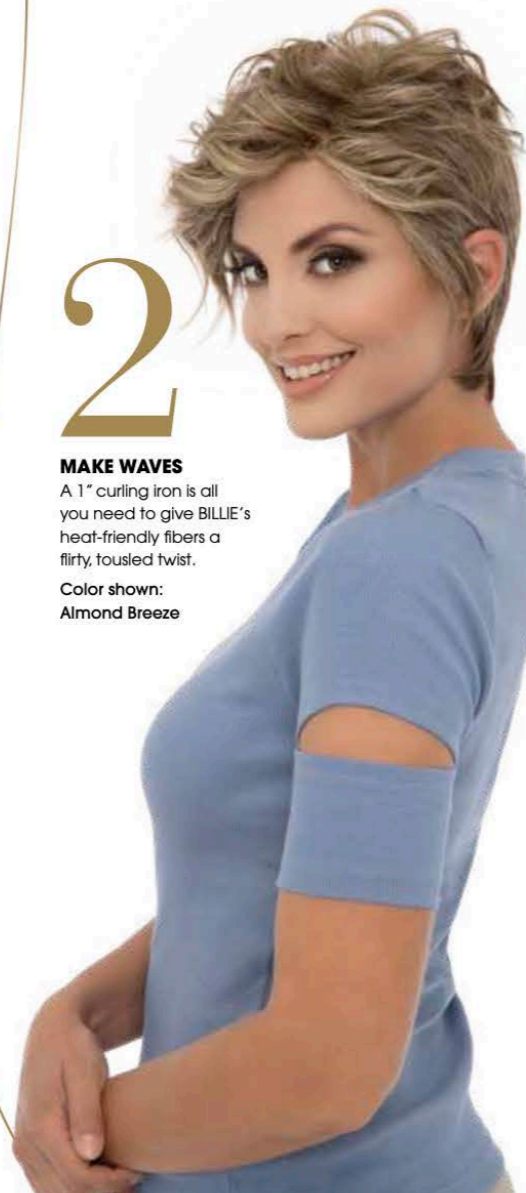
—Dori M., Verified Customer

2

MAKE WAVES

A 1" curling iron is all you need to give BILLIE's heat-friendly fibers a flirty, tousled twist.

Color shown:
Almond Breeze



1 **OUT of
THE BOX**

PIXIE PERFECTION

EnvyHair's advanced stylability allows you to wear BILLIE's flowing front layers down or off your face.

Color shown:
Amaretto Cream

BILLIE

Head size: Average
Construction: Ear-to-Ear
Lace Front, Mono Top,
Wetted Sides and Back
Front: 6.5"
Crown: 6.5"
Side: 3.0"
Nape: 2.25"
Weight: 2.5 oz. (71.0 g.)

Billie
1 STYLE 3 LOOKS



3

FROM DAY TO HEIGHT

The totally believable hairline of our Ear-to-Ear Lace Front lets you take BILLIE to new heights (using a blow-dryer and ENVYBeauty Balm).

Color shown:
Sparkling Champagne



**SUPREME STYLABILITY
AND BELIEVABILITY!**

With our exclusive LACE FRONT design that allows hair to be styled back from the face, and the natural-looking scalp of our unique MONO TOP construction, ENVY's 3 NEW heat-friendly EnvyHair™ styles are the ultimate in day-to-night versatility.



1 OUT of THE BOX

LUSH LOB
LISA features a flattering just-past-the-shoulder cut and a Lace Front Mono Top construction that lets you heat-style any way you choose (without anyone knowing you're wearing a wig).
Color shown: Lighter Red

LISA
Head size: Average
Construction: Ear-to-Ear Lace Front, Mono Top, Wefted Sides and Back
Front: 8.5"
Crown: 10.0"
Side: 9.0"
Nape: 8.0"
Weight: 4.34 oz. (123.1 g.)

Lisa
1 STYLE 3 LOOKS



More Wearable. And Sharable.
Share your photo or video selfie using **#LiveEnvyHair**



2

BEACH WAVES
EnvyHair's advanced stylability makes curling your way to this must-have look super-easy.
Color shown: Dark Blonde

"ENVYHAIR LOOKS AND FEELS LIKE MY BIO HAIR!"

—Marge M., Verified Customer



3

POLISHED CURL
A 1 1/4" curling iron makes this look your own. (Our Mono Top construction makes it look completely natural.)
Color shown: Golden Nutmeg

STYLABILITY. AFFORDABILITY. DURABILITY.

Our exclusive blend of **30% human hair / 70% synthetic hair looks, feels, moves, and styles just like the real thing. And lasts longer.**

- Priced about 1/3 less than 100% human hair products
- Built-in moisture-control can withstand up to 356°F (180°C)—far exceeding other heat-friendly wigs
- 32 on-trend styles in all
- 25 multi-dimensional shades

Want to Get the Looks?
View our 1 STYLE/3WAYS step-by-step videos at envywigs.com/videos

WOW
WORDS of WIGDOM

When styling, secure your wig to a form with 2" T-pins. And be sure to stick to the perimeter of the wig and NOT to puncture any Lace or Monofilament material, notes Designer & CEO, Alan Eaton.

envyhair
BY ALAN EATON

INTRODUCING 8 NEW READY-TO-WEAR SYNTHETIC

TOPPERS

From blunt cut to waves, ENVY's **8 NEW Toppers** add lush volume and coverage where extensions can't reach. Featuring either our Monofilament construction (for supremely natural movement) or our breathable Open Top, they bring next-level comfort and confidence to those seeking a solution to hair loss.



BE BLUNT TOPPER

Construction: Lace Front
Mono Part
Color shown: Toasted Sesame
Front: 7"
Crown: 9"
Side: 7.5"
Nape: 7.5"
Weight: 1.66 oz. (47.2 g.)



BIG BANGS TOPPER

Construction: Open Top
Color shown: Light Brown
Front: 5"
Crown: 8"
Side: 7"
Nape: 7.5"
Weight: 1.76 oz. (49.8 g.)



FLIP-FLIP HOORAY TOPPER

Construction: Open Top
Color shown: Medium Blonde
Front: 6.25"
Crown: 9"
Side: 10"
Nape: 9.5"
Weight: 2.15 oz. (60.9 g.)



LEADING PART TOPPER

Construction: Mono Top
Color shown: Medium Grey
Front: 5.5"
Crown: 6"
Side: 4.5"
Nape: 5.25"
Weight: 1.57oz. (44.6 g.)



MAKING WAVES TOPPER

Construction: Lace Front
Mono Part
Color shown: Light Grey
Front: 6"
Crown: 11.5"
Side: 10"
Nape: 9.5"
Weight: 2.51 oz. (71.2 g.)



PART THE CROWD TOPPER

Construction: Mono Part
Color shown: Sparkling Champagne
Front: 5"
Crown: 7.5"
Side: 4.86"
Nape: 4.25"
Weight: 1.5 oz. (42.6 g.)



Made of 100% Kanekalon® fiber—renowned for holding its shade, shine and shape.

All ENVY Toppers Available in 15 Multidimensional Shades:

Black, Cinnamon Raisin, Dark Blonde, Dark Brown, Dark Grey, Frosted, Light Blonde, Light Brown, Light Grey, Medium Blonde, Medium Brown, Medium Grey, Mocha Frost, Sparkling Champagne, and Toasted Sesame



POUF POSITIVE TOPPER

Construction: Open Top
Color shown: Light Blonde
Front: 3.25"
Crown: 3.5"
Side: 4"
Nape: 3.5"
Weight: 1.47 oz. (41.6 g.)



SPEAK VOLUME TOPPER

Construction: Open Top
Color shown: Medium Brown
Front: 3"
Crown: 4.5"
Side: 2.5"
Nape: 2.5"
Weight: 1.46 oz. (41.5 g.)

