

# *ready-to-* wherever™

FALL 2022

 **envy**  
BY ALAN EATON

wigs & hair add-ons



## LIVE YOUR HAIR TO THE FULLEST.

**F**eeling in control breeds confidence. And ENVY believes no woman should ever have to lose that confidence due to scalp sensitivity or thinning hair. Launched in response to a friend's hair loss, the brand is designed to be more wearable, more affordable, and to appeal to women of every age and ethnicity—with innovations that make every style more comfortable AND more life-like—helping to erase past stigmas associated with wearing a wig.

“We’re committed to giving wig-wearers more ways to express themselves,” says Designer & CEO, Alan Eaton, “while never giving their secret away.”



Look for Alan's **WORDS OF WIGDOM** throughout our catalog for expert styling tips, trends and product features.



# contents

READY-TO-WHEREVER | FALL 2022



- 4** 100% Human Hair
- 6** EnvyHair Human Hair/  
Synthetic Blend
- 24** Hand-Tied
- 26** Lace Front Mono Top
- 32** Lace Front Mono Part
- 40** Mono Top
- 46** Mono Part
- 50** Lace Front
- 52** Open Top

- 64** Toppers
- 66** Hair Add-Ons
- 68** Accessories

- 70** Color Chart
- 71** Color Index
- 74** Style Index



Cover: CHRISTINE in Ginger Cream

# 100% Human Hair

**BEST  
SELLER**

## **HANNAH**

**Head size:** Average

**Construction:** Mono Top,  
Lace Front, Hand-Tied  
Sides and Back

**Color shown:**  
Dark Blonde

**Front:** 8"

**Crown:** 9"

**Side:** 8"

**Nape:** 8"

**Weight:** 2.57 oz. (73 g.)

***HANNAH is  
about as real AND  
classic looking as  
you can get—with a  
Mono Top, Lace Front  
construction that  
perfectly simulates  
your natural hairline  
and hair growth.***

**Hand-selected.  
Hand-tied.  
Hands down,  
*THE  
BEST  
EVER!***

Designer Alan Eaton understands the importance hair plays in defining ourselves. And his **Human Hair Collection** redefines what's possible in natural-looking wigs.

Every strand has been hand-selected by Alan and his expert team to ensure the ultimate in rich color, unique texture, exquisite body and health. And our unique cap offers a near-custom fit and look.

Blow-dried, flat-ironed or set in rollers—ENVY's **Human Hair Collection** offers the same stylability as your own hair, giving you a glamorous lift and next-level confidence you never knew could come from wearing a wig.



### SOPHIA

**Head size:** Average

**Construction:** Mono Top, Lace Front, Hand-Tied Sides and Back

**Color shown:** Medium Brown

**Front:** 12"

**Crown:** 16"

**Side:** 13"

**Nape:** 10"

**Weight:** 4.6 oz. (131 g.)



### AMELIA

**Head size:** Average

**Construction:** Mono Top, Lace Front, Hand-Tied Sides and Back

**Color shown:** Medium Blonde

**Front:** 7.75"

**Crown:** 7.75"

**Side:** 5"

**Nape:** 2.5"

**Weight:** 2.57 oz. (73 g.)



## a unique cap construction

1. The **100% Hand-Tied** strands of our **Mono Top** construction allow for supremely natural movement, creating the appearance of natural hair growth at the part for parting versatility.
2. Virtually invisible pre-cut **Lace Front** provides a natural-looking hairline and off-the-face styling versatility.
3. **Polyurethane Strip** allows for a snug, secure fit.
4. **Velcro Adjustments** customize your wig's circumference.
5. **Flexible Ear Tabs** ensure a near-custom fit for next-level comfort and confidence.



# EnvyHair™

HUMAN HAIR/SYNTHETIC BLEND

30%  
human  
hair

70%  
synthetic  
hair

100%  
YOU!™

## WHITNEY

Head size: Average

Construction: Capless

Color shown: Chocolate Caramel

Front: 5.75"

Crown: 5.75"

Side: 6.25"

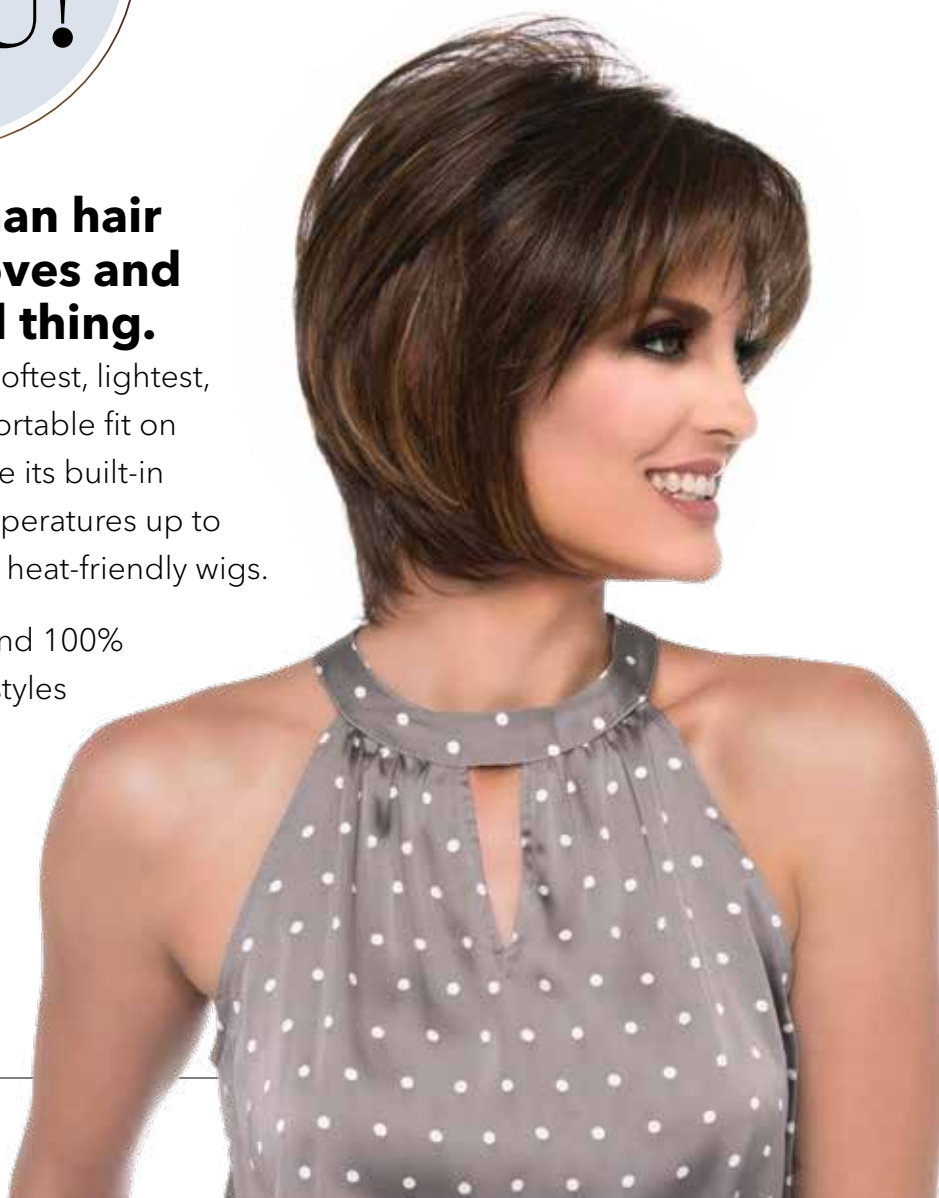
Nape: 3.75"

Weight: 3.03 oz. (86 g.)

## ENVY's exclusive human hair blend looks, feels, moves and styles just like the real thing.

Every silky strand is styled into the softest, lightest, head-hugging cap for a cool, comfortable fit on even the most sensitive scalps, while its built-in moisture control can withstand temperatures up to 356°F (180°C)—far exceeding other heat-friendly wigs.

Priced considerably less than top-end 100% human hair products—and with 10 styles available in our more affordable capless construction—EnvyHair™ makes the high-end, high-priced look of human hair more accessible than ever.





# JUST-TO-THE-CHIN IS IN!

*Styled sharp  
and structured or  
straight-out-of-bed  
tousled, chin-length  
looks are  
super-versatile.*

## JORDAN

**Head size:** Average

**Construction:** Ear-to-Ear  
Lace Front Mono Top

**Color shown:** Dark Grey

**Front:** 9.5"

**Crown:** 3"-11"

**Side:** 4.5"-8.5"

**Nape:** 3.5"

**Weight:** 3.77 oz. (107 g.)

**WOW**  
WORDS of WIGDOM

DESIGNER & CEO ALAN EATON SUGGESTS GENTLY COMBING WIGS ON A STAND WITH A WIDE-TOOTH COMB AFTER SHAMPOOING. START JUST ABOVE THE ENDS AND MOVE UPWARD (WHILE COMBING DOWNWARD).



**KRISTA**

**Head size:** Average

**Construction:** Ear-to-Ear Lace Front  
Mono Top, Wefted Sides and Back

**Color shown:** Toasted Sesame

**Front:** 6.5"-8.5"

**Crown:** 12"-16"

**Side:** 12"-17"

**Nape:** 19"

**Weight:** 7.32 oz. (207.5 g.)

***KRISTA'S LOOSE  
BEACH WAVES*** look sexy  
year-round. And thanks to ENVY's  
individually hand-tied strands that  
simulate natural hair growth, they  
can be styled to either side.





### ARIA

**Head size:** Average

**Construction:** Capless

**Color shown:**

Dark Blonde

**Front:** 4.5"

**Crown:** 3.75"

**Side:** 3.5"

**Nape:** 3.5"

**Weight:** 2.78 oz. (79 g.)

## smart construction. smart style.



*EnvyHair™ wigs are smartly constructed in one of eight ways:*

- **Ear-to-Ear Lace Front** for the most realistic hairline available.
- **Chiffon-Lined** to please even the most sensitive scalps.
- **Capless** for scalp-hugging contours that lie beautifully.
- **Mono Top** for more styling flexibility, allowing you to style to either side.
- **Lace Front Mono Top** (shown inset) for worry-free styling away from the face.
- **Hand-Tied (Sides & Back)** to move like natural hair.
- **Hand-Tied (Sides & Back) Lace Front Mono Top** for the ultimate movement, hairline and styling flexibility.
- **Lace Front Mono Part** for a hairline and part that look totally your own.



### CHELSEA

**Head size:** Average

**Construction:** Mono Top, Lace Front, Hand-Tied Sides and Back

**Color shown:**

Medium Blonde

**Front:** 15.5"

**Crown:** 12.25"

**Side:** 10.75"

**Nape:** 5.75"

**Weight:** 4.78 oz. (135.5 g.)



**YURI**

**Head size:** Average

**Construction:**

Capless

**Color shown:**

Chocolate Cherry

**Front:** 4"

**Crown:** 6.75"

**Side:** 5.75"

**Nape:** 1.5"

**Weight:** 3.31 oz. (94 g.)



**OPHELIA**

**Head size:** Average

**Construction:**

Capless

**Color shown:**

Toasted Sesame

**Front:** 4"

**Crown:** 4.75"

**Side:** 3"

**Nape:** 2"

**Weight:** 2.18 oz. (62 g.)





“Seriously awesome!  
I have about seven  
wigs—but ENVY’s is  
hands-down my favorite.  
The color, style, length  
and way it lays right  
out of the box are  
just perfect. There  
is nothing wiggy  
about this wig!”

—Debra E.,  
Verified Buyer

#### AVA

**Head size:** Average

**Construction:** Lace Front  
Mono Part

**Color shown:** Light Brown

**Front:** 7.5"

**Crown:** 11.5"

**Side:** 8.5"

**Nape:** 11.25"

**Weight:** 5.18 oz. (147 g.)

#### ISABELLA

**Head size:** Average

**Construction:** Ear-to-Ear  
Lace Front Mono Top, Wefted  
Sides and Back

**Color shown:** Sparkling  
Champagne

**Front:** 10"

**Crown:** 9"-10"

**Side:** 8"-9"

**Nape:** 7.25"

**Weight:** 5.3 oz. (151 g.)



Shop EVERY STYLE, IN EVERY COLOR, EVERY DAY—with  
25 multidimensional shades in all—at **EnvyWigs.com**

### TANDI

**Head size:** Average  
**Construction:** Capless,  
 Mono Crown  
**Color shown:** Medium Grey  
**Front:** 4"  
**Crown:** 8"  
**Side:** 5.5"  
**Nape:** 2.25"  
**Weight:** 3.56 oz. (101 g.)



### EMMA

**Head size:** Average  
**Construction:** Lace Front  
 Mono Part, Wefted Sides  
 and Back  
**Color shown:** Creamed Coffee  
**Front:** 3"-13"  
**Crown:** 3"-12.5"  
**Side:** 7.5"-11"  
**Nape:** 5"  
**Weight:** 4.59 oz. (128 g.)



### DESTINY

**Head size:** Average  
**Construction:** Mono Top,  
 Hand-Tied Sides and Back  
**Color shown:**  
 Medium Brown  
**Front:** 2.25"  
**Crown:** 3.75"  
**Side:** 2.25"  
**Nape:** 2"  
**Weight:** 1.64 oz. (46.4 g.)





**BEST  
SELLER**

**ZOEY**

**Head size:** Average

**Construction:** Mono Top,  
Lace Front, Hand-Tied Sides  
and Back

**Color shown:** Light Grey

**Front:** 7.75"

**Crown:** 10.25"

**Side:** 9.25"

**Nape:** 8.25"

**Weight:** 3.95 oz. (112.1 g.)

***FROM A  
TO ZOEY...***

*style this classic  
side-swept,  
shoulder-length  
look any way you  
want, thanks to  
our unique  
EnvyHair blend  
that stands  
up to rollers,  
blow dryers  
and irons.*



**FIONA**

**Head size:** Average

**Construction:** Lace Front  
Mono Crown

**Color shown:** Medium Brown

**Front:** 4"

**Crown:** 4"

**Side:** 2"

**Nape:** 2"

**Weight:** 2.29 oz. (65 g.)

**PICK  
YOUR PIXIE.**

*Less “bangy.”  
Extra short and  
brow-grazing.  
Or slightly longer  
than the norm.  
The hotter-than-ever  
Pixie Cut can be  
worn many ways.  
And ENVY’s multiple  
styles make trying the  
trend easy—without  
ever having to  
cut your hair.*





### **TARYN**

**Head size:** Average

**Construction:** Mono Top,  
Wefted Sides and Back

**Color shown:** Dark Brown

**Front:** 3"

**Crown:** 13"

**Side:** 11"

**Nape:** 11"

**Weight:** 5.1 oz. (145 g.)

“ I love EnvyHair—and people can’t believe they’re wigs! I let everyone know and hope people begin to think of wigs as just one more way to enhance your appearance. ”

—*Verified Buyer*



### **OLIVIA**

**Head size:** Average

**Construction:** Capless

**Color shown:** Light Grey

**Front:** 3.75"

**Crown:** 4"

**Side:** 2.75"

**Nape:** 1.75"

**Weight:** 2.53 oz. (72 g.)

**WOW**  
WORDS of WIGDOM

FROM MIRANDA IN HBO MAX’S *SEX & THE CITY* REBOOT TO ANDIE MACDOWELL’S STUNNING CANNES APPEARANCE, EVERYONE SEEMS TO BE GOING GREY. “MACDOWELL’S MIX OF DARKER BROWN AND SILVER STREAKS JUST WORKS!” SAYS DESIGNER & CEO ALAN EATON, WHO HAS IMBUED ENVY’S GREY SHADES WITH MULTIDIMENSIONAL DRAMA.

**BEST  
SELLER**

**LYNSEY**

**Head size:** Average

**Construction:** Mono Top,  
Lace Front, Wefted Sides  
and Back

**Color shown:**  
Dark Blonde

**Front:** 9.5"

**Crown:** 10"

**Side:** 7.75"

**Nape:** 7"

**Weight:** 4.52 oz. (128 g.)

**MANY  
ON-TREND  
STYLES ARE  
BANGING...**

*with short bangs,  
curtain bangs,  
straight-across  
bangs and LYNSEY's  
universally flattering  
long bangs.*



### GRACE

**Head size:** Average

**Construction:** Mono Top,  
Hand-Tied Sides and Back

**Color shown:** Dark Red

**Front:** 4"

**Crown:** 7"

**Side:** 6"

**Nape:** 6.75"

**Weight:** 3.17 oz. (90 g.)



### AUBREY

**Head size:** Average

**Construction:** Mono Top,  
Hand-Tied Sides and Back

**Color shown:**  
Medium Brown

**Front:** 4.5"

**Crown:** 4.25"

**Side:** 4.25"

**Nape:** 3.25"

**Weight:** 2.52 oz. (71.5 g.)



## multidimensional and available in 25 shades

Created with the latest tone-on-tone blending techniques, **EnvyHair** wigs are made with only the finest fibers that hold their shades, shine and shape even better than 100% human hair.

### COTI

**Head size:** Average

**Construction:** Mono Top, Lace Front, Hand-Tied Sides and Back

**Color shown:** Light Brown

**Front:** 4.25"

**Crown:** 4.25"

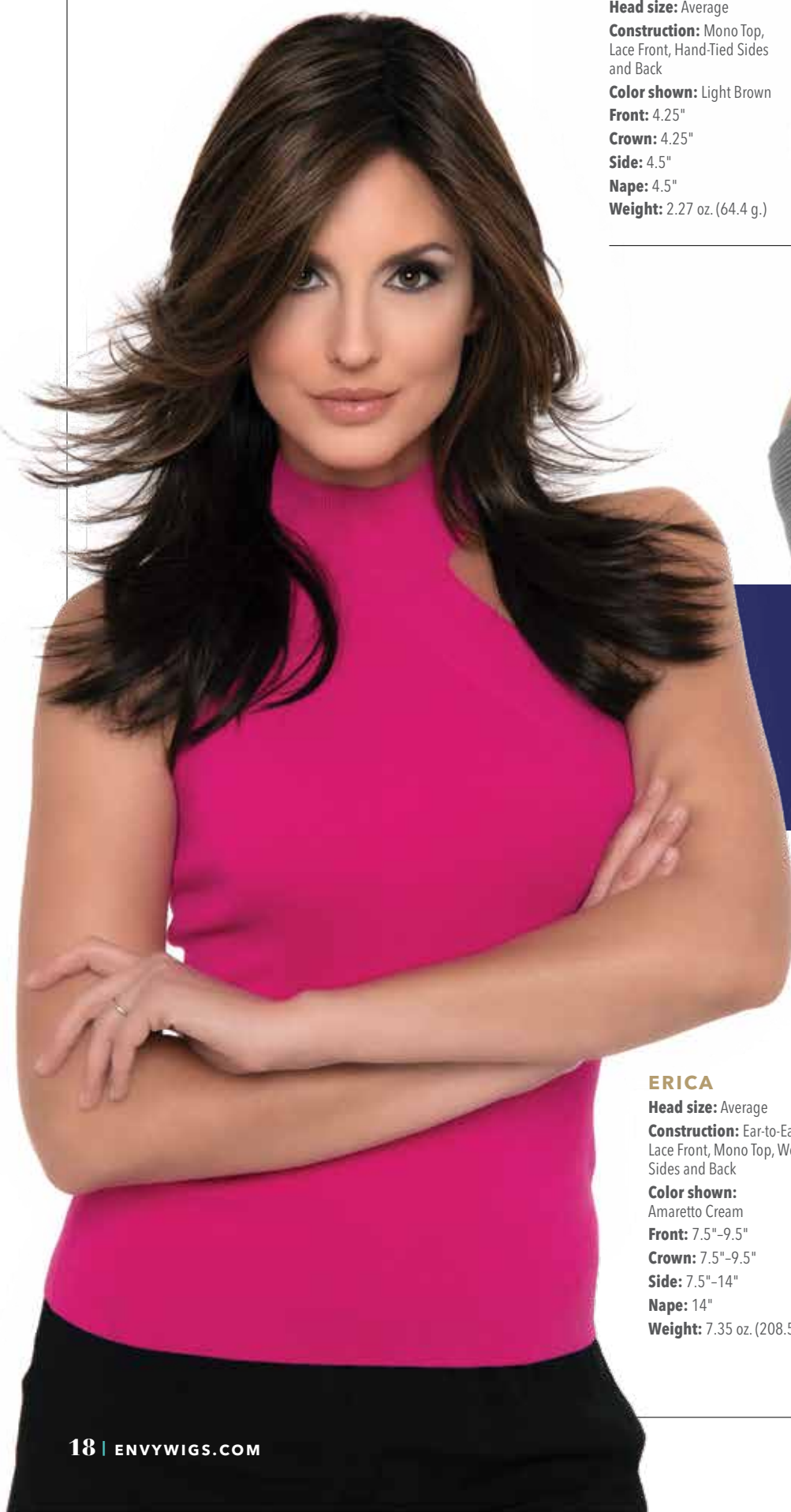
**Side:** 4.5"

**Nape:** 4.5"

**Weight:** 2.27 oz. (64.4 g.)



EnvyHair™ looks, acts AND styles just like human hair—at nearly 1/3 the price—blending 70% heat-friendly fiber and 30% human hair to withstand temperatures up to 180°C or 356°F



### ERICA

**Head size:** Average

**Construction:** Ear-to-Ear Lace Front, Mono Top, Wefted Sides and Back

**Color shown:** Amaretto Cream

**Front:** 7.5"-9.5"

**Crown:** 7.5"-9.5"

**Side:** 7.5"-14"

**Nape:** 14"

**Weight:** 7.35 oz. (208.5 gr.)

“ ENVY has a new customer! The color comes alive and is beautiful! I’m truly amazed at how natural this style looks.”

—Verified Customer



“ My own hair was extremely thin so I decided on an ENVY wig that was closest to my color, and it was amazing how similar it was to my own hair. A winner! ”

—Cyndy, *Verified Buyer*



**DANIELLE**

**Head size:** Average

**Construction:** Mono Top, Lace Front, Wefted Sides and Back

**Color shown:** Mocha Frost

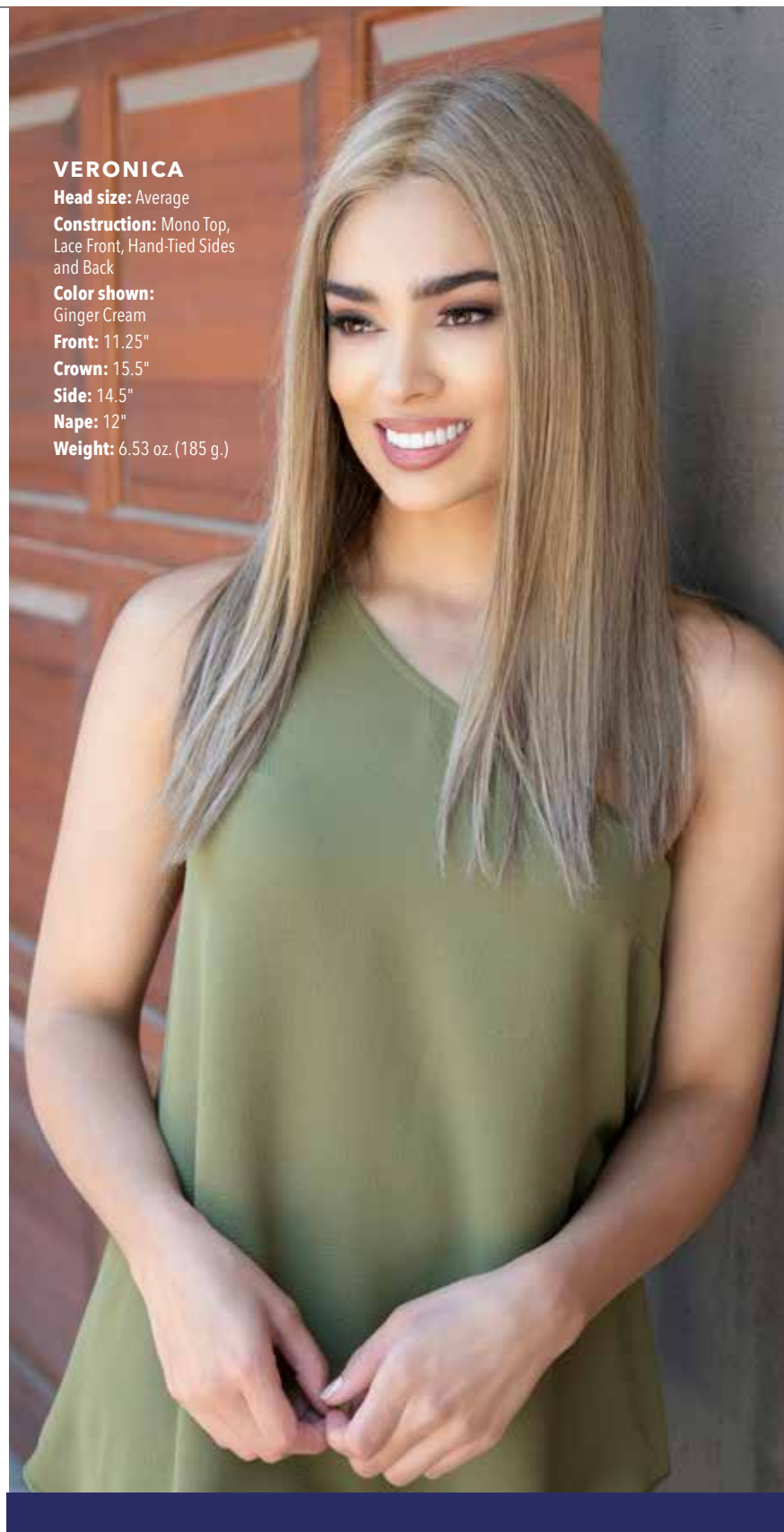
**Front:** 4"

**Crown:** 7.5"

**Side:** 8"

**Nape:** 8.75"

**Weight:** 4.22 oz. (119.5 g.)



**VERONICA**

**Head size:** Average

**Construction:** Mono Top, Lace Front, Hand-Tied Sides and Back

**Color shown:**

Ginger Cream

**Front:** 11.25"

**Crown:** 15.5"

**Side:** 14.5"

**Nape:** 12"

**Weight:** 6.53 oz. (185 g.)



**FLAME**

**Head size:** Average

**Construction:** Capless,  
Mono Crown

**Color shown:**  
Cinnamon Raisin

**Front:** 4"-5.25"

**Crown:** 5.5"

**Side:** 3"

**Nape:** 1.75"

**Weight:** 2.5 oz. (71 g.)

**HEATHER**

**Head size:** Average

**Construction:** Mono Top,  
Lace Front, Hand-Tied Sides  
and Back

**Color shown:** Lighter Red

**Front:** 3.5"

**Crown:** 2.75"

**Side:** 2.5"

**Nape:** 1.5"

**Weight:** 1.87 oz. (53 g.)



**IT  
TAKES  
TWO.**

*Regular wearers  
of wigs should  
have at least two  
to choose from—  
allowing them to  
be rotated to extend  
their wearable  
life. (And to avoid  
excessive cleaning.)*

**capless =  
flawless**

with 8 EnvyHair styles  
offering the flawlessly smooth  
fit and surprising affordability  
that cap-free construction  
provides.





### SELENA

**Head size:** Average

**Construction:** Capless

**Color shown:** Dark Red

**Front:** 7"

**Crown:** 11"

**Side:** 8"-10.5"

**Nape:** 12.75"

**Weight:** 4.93 oz. (140 g.)

**WOW**  
WORDS of WIGDOM

WHILE A CURLY WIG IS A "LOOK" UNTO ITSELF, SAYS DESIGNER & CEO ALAN EATON, THE STYLING FLEXIBILITY OF ENVY WIGS LETS YOU MAKE THEM YOUR OWN.

TRY **PIN-UP BANGS** FOR A RETRO LOOK OR A **SIDE-SWEPT LOW PONYTAIL**. AND FOR A **MESSY UPDO**, SIMPLY TIE OFF A PONYTAIL AND PIN SECTIONS OF IT TO ITS BASE.

**WITH EVERY  
STYLE,  
EVERY DAY,  
IN EVERY  
COLOR**

*(25 multidimensional  
shades in all) EVERY  
woman can discover  
the next-level  
confidence an ENVY  
wig can bring.*

**KYLIE**

**Head size:** Average

**Construction:** Mono Top,  
Hand-Tied Sides and Back,  
Silk Chiffon Lining

**Color shown:**  
Almond Breeze

**Front:** 3.25"

**Crown:** 6.25"

**Side:** 4.25"

**Nape:** 3.75"

**Weight:** 2.82 oz. (80 g.)

**our 3 silk  
chiffon-  
lined styles**

**keep sensitive scalps  
cool with ultra-soft,  
breathable comfort.**



“It feels like I’m wearing nothing,”

one buyer told us. With the guaranteed comfort of our ultra-soft silk chiffon cap, it’s a sentiment we hear again and again.

#### SHYLA

**Head size:** Average

**Construction:** Mono Top, Hand-Tied Sides and Back, Silk Chiffon Lining

**Color shown:** Toasted Sesame

**Front:** 5.25"

**Crown:** 7.5"

**Side:** 5"

**Nape:** 2.25"

**Weight:** 3.11 oz. (88.2 g.)



#### ABBEY

**Head size:** Average

**Construction:** Mono Top, Hand-Tied Sides and Back, Silk Chiffon Lining

**Color shown:** Black

**Front:** 7"

**Crown:** 7"

**Side:** 5.5"

**Nape:** 2"

**Weight:** 2.93 oz. (83 g.)



READY-TO-WEAR SYNTHETIC HAIR

# Hand-Tied

**BREATHABLE.**  
**NATURAL.**  
**BEAUTIFUL.**

"I was blown away by the comfort of the cap" is music to our ears—considering **ENVY's Hand-Tied Collection** was originally designed for women with hair loss or sensitive scalps. These Lace Front Mono Top styles feature **Individually Hand-Tied** strands across the sides and back that move just like the real thing. And because they're so sheer, they give the illusion of natural hair growth, blending with any skin tone for stellar styling flexibility

**NEW!**

**JANE**

**Head size:** Average

**Construction:** Temple-To-Temple  
Lace Front Mono Top, Hand-Tied  
Sides and Back Wefted Nape

**Color Shown:** Light Grey

**Front:** 3.5"

**Crown:** 6"

**Side:** 5"

**Nape:** 4.5"

**Weight:** 2.25 oz. (65 g.)

***SHARP, SPORTY  
AND EASILY STYLED,***  
*the shag remains a salon staple—and our  
modern, HAND-TIED take frames the face  
in 100% natural-looking layers.*





## the ultimate in natural look & movement.

Features **(1)** our hand-tied **Mono Top** construction for supremely natural movement. **(2)** A hand-tied, virtually invisible **Lace Front** for a natural-looking hairline. **(3)** **Hand-tied** strands across the cap's entire sides and back.

### ROXIE

**Head size:** Average

**Construction:** Lace Front Mono Top Hand-Tied Sides and Back

**Color shown:** Dark Red

**Front:** 9"

**Crown:** 12"

**Side:** 7"

**Nape:** 11"

**Weight:** 3.9 oz. (110.5 g.)



### TASHA

**Head size:** Average

**Construction:** Lace Front Mono Top Hand-Tied Sides and Back

**Color shown:** Creamed Coffee

**Front:** 6.75"

**Crown:** 8"

**Side:** 5"

**Nape:** 2.5"

**Weight:** 2.4 oz. (68 g.)



### KIMBERLY

**Head size:** Average

**Construction:** Lace Front Mono Top Hand-Tied Sides and Back

**Color shown:** Chocolate Caramel

**Front:** 6"

**Crown:** 6"

**Side:** 9"

**Nape:** 3.5"

**Weight:** 2.96 oz. (84 g.)



READY-TO-WEAR SYNTHETIC HAIR

# Lace Front Mono Top

## 24/7 HAIR.

With day-to-night versatility AND a super-comfortable cap that can be worn from early morning to the wee hours, these wigs are engineered for real life. And real style.

The natural-looking hairline of our exclusive **Lace Front** design allows hair to be styled back from the face, while the unique technology of our **Mono Top** construction gives the look of a natural scalp.

### BRITTANEY

**Head size:** Average

**Construction:** Lace Front  
Mono Top

**Color shown:** Lighter Red

**Front:** 10"

**Crown:** 11.5"

**Side:** 8.75"

**Nape:** 5.5"

**Weight:** 4.3 oz. (122 g.)



### BROOKE

**Head size:** Large

**Construction:** Lace Front  
Mono Top

**Color shown:**  
Medium Blonde

**Front:** 5.75"

**Crown:** 11.5"

**Side:** 11"

**Nape:** 14"

**Weight:** 5.15 oz. (146 g.)





# SHOULDER-LENGTH CUTS SUIT EVERY WOMAN

—and with its face-framing layers that kick off the shoulders, ROSE does it with movement and style.

## NEW!

### ROSE

**Head size:** Average

**Construction:** Lace Front Mono Top Wefted Sides and Back

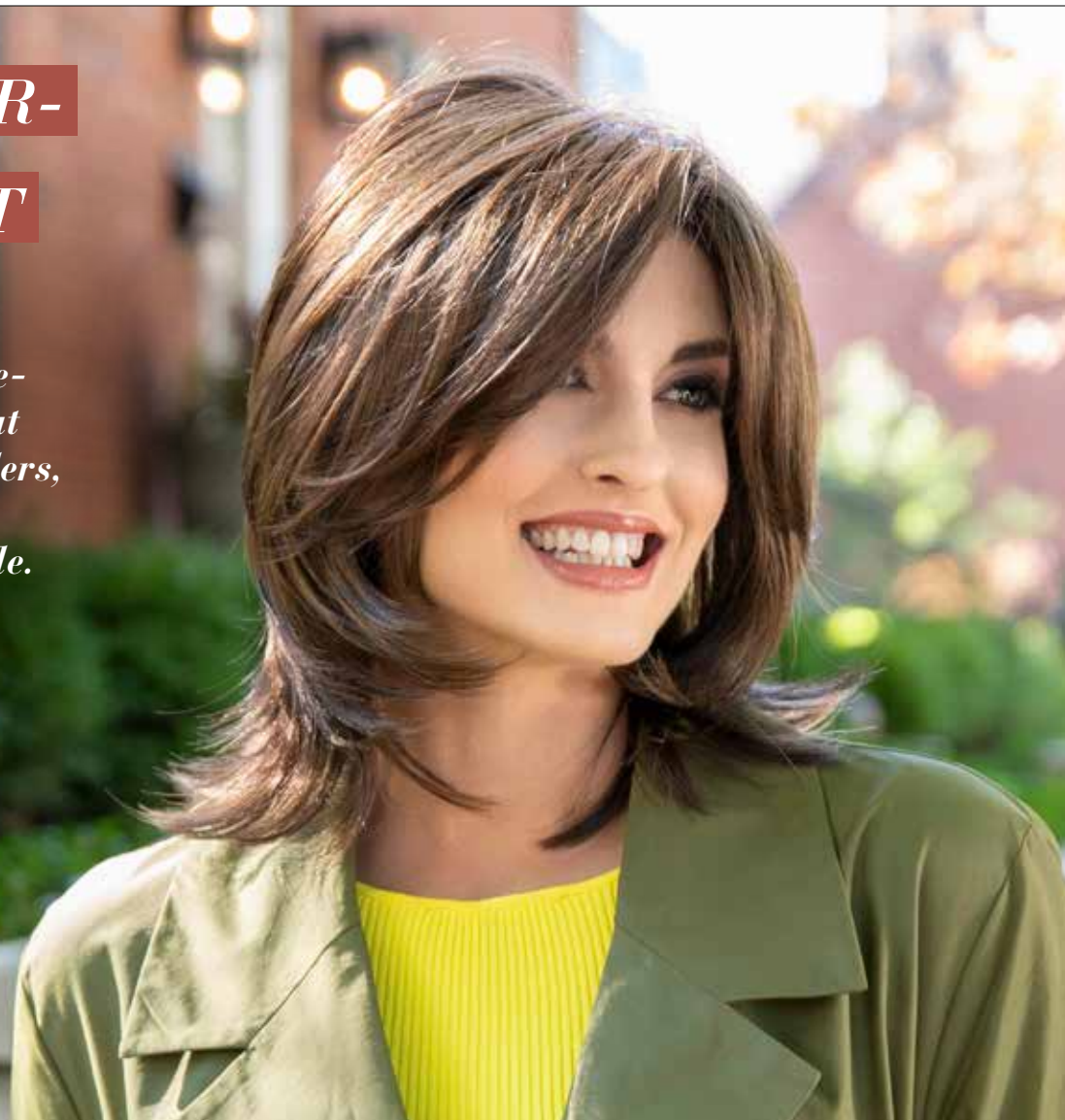
**Color Shown:** Chocolate Caramel

**Front:** 6.5"

**Crown:** 8"

**Back:** 7"

**Weight:** 3.8 oz. (108 g.)



### TAYLOR

**Head size:** Average

**Construction:** Lace Front Mono Top

**Color shown:** Cinnamon Raisin

**Front:** 5.5"

**Crown:** 8"

**Side:** 6.75"

**Nape:** 6.25"

**Weight:** 3.48 oz. (98.5 g.)



### MAYA

**Head size:** Average

**Construction:** Lace Front Mono Top

**Color shown:** Light Blonde

**Front:** 13.25"

**Crown:** 15"

**Side:** 14.75"

**Nape:** 13.75"

**Weight:** 5.12 oz. (145.2 g.)





### **SHEENA**

**Head size:** Average

**Construction:** Lace Front Mono Top

**Color shown:** Chocolate Caramel

**Front:** 7.75"

**Crown:** 9"

**Side:** 13"

**Nape:** 15.5"

**Weight:** 6.0 oz. (170 g.)

### **NEW!**

### **SAM**

**Head size:** Average

**Construction:** Lace Front Mono Top, Wefted Sides and Back

**Color shown:** Dark Grey

**Front:** 5.5"

**Crown:** 10"

**Sides:** 10"

**Nape:** 6.5"

**Weight:** 4.3 oz. (122 g.)

## ***SAM'S SOPHISTICATED SHOULDER LENGTH***

*makes the most of our LACE FRONT  
MONO TOP construction, with lush  
layers you can sweep back  
from your face without ever giving  
away that you're wearing a wig.*





#### **RYLEE**

**Head size:** Average  
**Construction:** Lace Front  
 Mono Top  
**Color shown:**  
 Toasted Sesame  
**Front:** 6.5"  
**Crown:** 8"  
**Side:** 6"  
**Nape:** 8.5"  
**Weight:** 3.46 oz. (98 g.)



#### **JEANNIE**

**Head size:** Average  
**Construction:** Lace Front  
 Mono Top  
**Color shown:** Lighter Red  
**Front:** 2.25"  
**Crown:** 3.25"  
**Side:** 1.75"  
**Nape:** 1.75"  
**Weight:** 1.76 oz. (50 g.)



#### **ANGIE**

**Head size:** Average  
**Construction:** Lace Front  
 Mono Top  
**Color shown:** Dark Red  
**Front:** 7"  
**Crown:** 5"  
**Side:** 6.25"  
**Nape:** 3.25"  
**Weight:** 2.2 oz. (62.5 g.)



### **ready-to-wear style you can make your own.**

Styles feature a **(1) Mono Top** construction for supremely natural movement and **(2)** virtually invisible, pre-cut **Lace Front**. And while they've been pre-styled to keep their shape—even after washing—the bangs and fringe can be trimmed for a custom cut.

### ***EVERY SHADE OF YOU.***

*With 12 NEW on-trend, rooted shades, including Platinum Shadow (right), you're sure to find the ENVY wig that perfectly reflects you!*

#### **DELANEY**

**Head size:** Average  
**Construction:** Lace Front Mono Top  
**Color shown:** Creamed Coffee  
**Front:** 4.75"  
**Crown:** 5.5"  
**Side:** 5.75"  
**Nape:** 2.5"  
**Weight:** 2.5 oz. (71 g.)



#### **MICKI**

**Head size:** Average  
**Construction:** Lace Front Mono Top  
**Color shown:** Dark Blonde  
**Front:** 5.25"  
**Crown:** 4.25"  
**Side:** 2.5"  
**Nape:** 2.5"  
**Weight:** 2.22 oz. (63 g.)



#### **BRIANNA**

**Head size:** Average  
**Construction:** Lace Front Mono Top  
**Color shown:** Chocolate Caramel  
**Front:** 7.75"  
**Crown:** 14.25"  
**Side:** 15.5"  
**Nape:** 17.75"  
**Weight:** 6.0 oz. (170 g.)







**NEW!**

**AMBER**

**Head size:** Average

**Construction:** Lace Front Mono Top

**Color shown:** Golden Nutmeg

**Front:** 4.5"

**Crown:** 9"

**Side:** 8"

**Nape:** 5.5"

**Weight:** 4.1 oz. (117 g.)

**AMBER'S  
SHOULDER-  
LENGTH LAYERS**

*and bangs are razored for a chic, contemporary look and appear as if they're growing from your very own scalp.*

“Bobbi is my favorite wig—I own four! I get so many compliments that I want to ensure she's always in my collection.”

—Verified Buyer



**TINA**

**Head size:** Average

**Construction:** Lace Front Mono Top

**Color shown:** Vanilla Butter

**Front:** 3"

**Crown:** 4.75"

**Side:** 2.25"

**Nape:** 1.75"

**Weight:** 2.01 oz. (57 g.)



**BOBBI**

**Head size:** Average

**Construction:** Lace Front Mono Top

**Color shown:** Mocha Frost

**Front:** 7"

**Crown:** 12.5"

**Side:** 11.75"

**Nape:** 12.75"

**Weight:** 4.72 oz. (134 g.)

READY-TO-WEAR SYNTHETIC HAIR

# Lace Front Mono Part

**THE LONG  
AND SHORT  
OF IT IS,**

*AMY's short, feminine shape and side-swept bang offers women a sophisticated way to get in on the edgy asymmetrical trend—without ever cutting their hair.*

**For every part**  
***YOU PLAY.***

Like our Lace Front Mono Top collection, our **Lace Front Mono Part** styles offer unmatched comfort and stylability—guaranteeing the appearance of a natural hairline, no matter how you wear it, and a true-to-life part—that let you strut your stuff with confidence.

**NEW!**

**AMY**

**Head size:** Average

**Construction:** Lace Front Mono Part

**Color shown:** Toasted Sesame

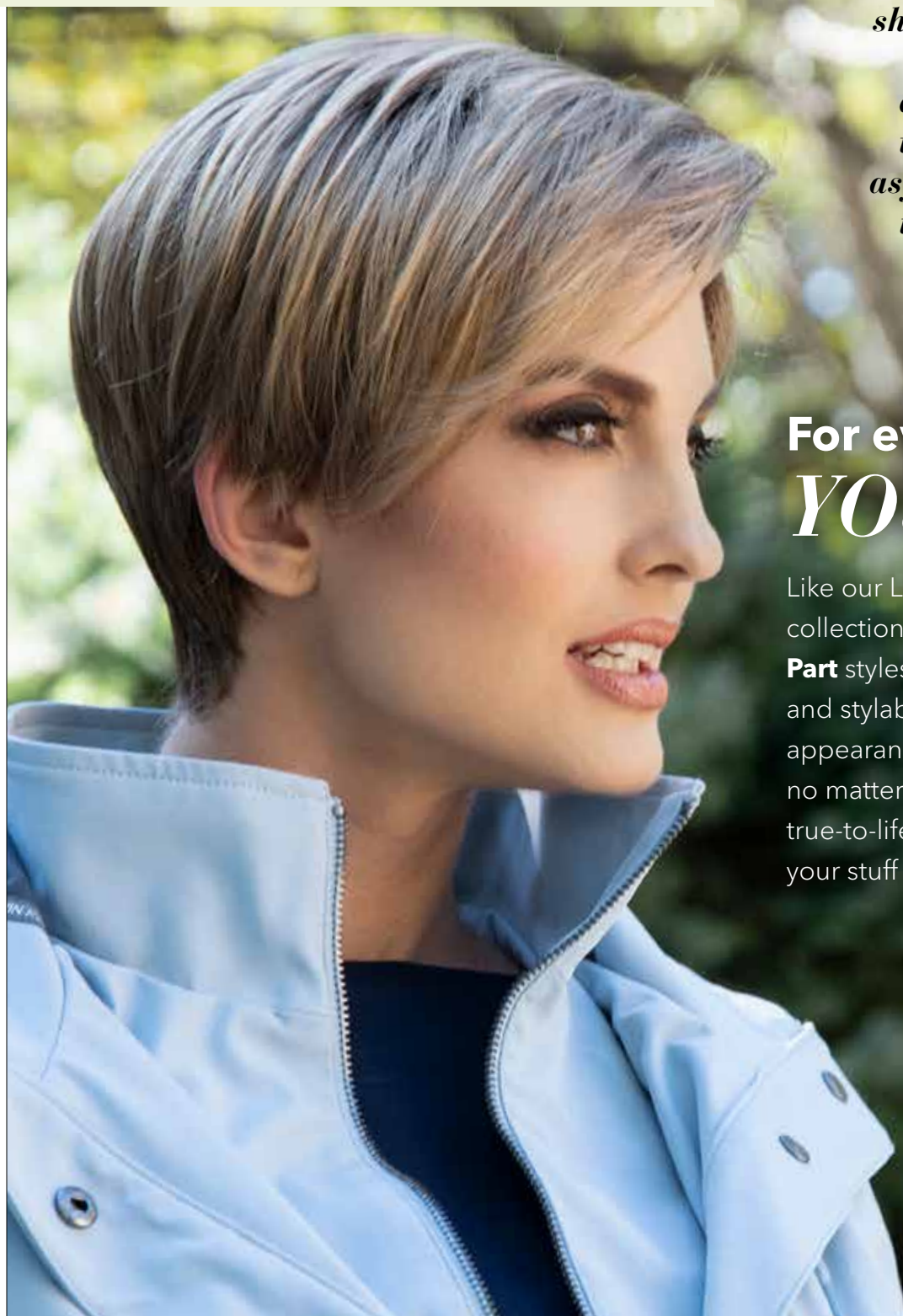
**Front:** 5.5"

**Crown:** 4.5"

**Side:** 2"

**Nape:** 1.5"

**Weight:** 2.2 oz. (65 g.)





### COCO

**Head size:** Average

**Construction:** Lace Front  
Mono Part

**Color shown:**  
Medium Blonde

**Front:** 8.75"

**Crown:** 9.25"

**Side:** 7.25"

**Nape:** 3.75"

**Weight:** 3.25 oz. (92 g.)



### HARPER

**Head size:** Average

**Construction:** Lace Front  
Mono Part

**Color shown:** Light Blonde

**Front:** 5.5"

**Crown:** 8.5"

**Side:** 8.25"

**Nape:** 2"

**Weight:** 2.79 oz. (79 g.)

### BELINDA

**Head size:** Average

**Construction:** Lace Front Mono Part

**Color shown:** Cinnamon Raisin

**Front:** 8"

**Crown:** 14"

**Side:** 12.25"

**Nape:** 12"

**Weight:** 4 oz. (114 g.)



## our unique construction perfectly mimics real hair.

(1) Individually **Hand-Tied Strands** for supremely natural movement, and the appearance of natural hair growth at the part.

(2) A virtually invisible, pre-cut **Lace Front** mimics a natural hairline for off-the-face styling versatility.

(3) Stretchable **Laces** extending from nape to top and

(4) Flexible **Ear Tabs** ensure a secure, near-custom fit.

## LONDON

**Head size:** Average

**Construction:** Lace Front Mono Part

**Color shown:** Medium Grey

**Front:** 10.5"

**Crown:** 12"

**Side:** 6"

**Nape:** 2.25"

**Weight:** 4.01 oz. (113.7 g.)

## LONDON'S OFF-SHOULDER LENGTH

*delivers the classic  
chic one usually associates  
with a salon. A lace front  
and part so natural—it looks  
like you just came from one.*



# ROOTED IN WHAT TRULY MATTERS™.

*With 12 NEW beautiful, totally natural-looking rooted colors (including Sahara Blonde, below), customers can trust they'll find their perfect shade. And wear it with confidence.*



## TINSLEY

**Head size:** Average  
**Construction:** Lace Front  
Mono Part  
**Color shown:**  
Chocolate Caramel  
**Front:** 7"  
**Crown:** 4.75"  
**Side:** 4.5"  
**Nape:** 1.5"  
**Weight:** 2.33 oz. (66 g.)



## EVE

**Head size:** Average  
**Construction:** Lace Front  
Mono Part  
**Color shown:** Sahara Blonde  
**Front:** 6.5"  
**Crown:** 7.5"  
**Side:** 5"  
**Nape:** 1.5"  
**Weight:** 2.85 oz. (80.7 g.)

## HARMONY

**Head size:** Average  
**Construction:** Lace Front  
Mono Part  
**Color shown:**  
Chocolate Caramel  
**Front:** 4.5"  
**Crown:** 12.5"  
**Side:** 11"  
**Nape:** 11"  
**Weight:** 4.76 oz. (134.9 g.)



“ENVY is my favorite wig. No one ever knows that I am wearing one.”

—Kristen, Verified Buyer



### WENDI

**Head size:** Average

**Construction:** Lace Front Mono Part

**Color shown:** Ginger Cream

**Front:** 4.75"

**Crown:** 15"

**Side:** 19"

**Nape:** 20"

**Weight:** 6.50 oz. (202.6 g.)

### ASHLEY

**Head size:** Average

**Construction:** Lace Front Mono Part

**Color shown:** Light Blonde

**Front:** 7"

**Crown:** 8.25"

**Side:** 9.25"

**Nape:** 8.25"

**Weight:** 4.27 oz. (121 g.)







**NEW!**

**JOY**

**Head size:** Average

**Construction:** Lace Front  
Mono Part

**Color Shown:** Light Blonde

**Front:** 5.5"

**Crown:** 10.25"

**Side:** 11.25"

**Nape:** 12.25"

**Weight:** 4.7 oz. (133 g.)

**ENVY'S LACE FRONT  
TECHNOLOGY**

*provides an invisible hairline, perfect for sweeping (or throwing) back JOY's long layers and face-framing bangs for some fresh blow-out bounce.*



### DAKOTA

**Head size:** Average

**Construction:** Lace Front  
Mono Part

**Color shown:**  
Medium Blonde

**Front:** 5.25"

**Crown:** 10"

**Side:** 8.75"

**Nape:** 8"

**Weight:** 3.33 oz. (94.3 g.)



DREAM OF GOING BLONDE? FIRST DETERMINE WHETHER YOUR SKIN TONE IS WARM OR COOL, ADVISES DESIGNER & CEO ALAN EATON. COOL SHADES (SPARKLING CHAMPAGNE OR LIGHT BLONDE) SUIT PALER/COOL SKIN TONES, WHILE GOLDEN OR HONEY SHADES (VANILLA BUTTER OR DARK BLONDE) SUIT DARKER/WARMER SKIN.



**100%  
beautiful.**

ENVY ready-to-wear synthetic wigs are made with only the finest 100% Kanekalon® fiber—renowned for holding its shade, shine and shape.

#### CHLOE

**Head size:** Average

**Construction:** Lace Front Mono Part

**Color shown:** Light Blonde

**Front:** 9"

**Crown:** 10.5"

**Side:** 8.75"

**Nape:** 5.25"

**Weight:** 3.59 oz. (101.8 g.)

#### JULIET

**Head size:** Average

**Construction:** Lace Front Mono Part

**Color shown:** Light Blonde

**Front:** 7"

**Crown:** 6"

**Side:** 6.5"

**Nape:** 3"

**Weight:** 2.79 oz. (79 g.)



#### CARRISA

**Head size:** Average

**Construction:** Lace Front Mono Part

**Color shown:** Toasted Sesame

**Front:** 6.75"

**Crown:** 4.5"

**Side:** 3"-5"

**Nape:** 1.5"

**Weight:** 2.12 oz. (60 g.)

READY-TO-WEAR SYNTHETIC HAIR

# Mono Top

## FUN or NECESSITY?

"While I've worn wigs off and on forever for fun," one customer told us, "I now wear them more out of necessity! And my ENVY wig is the best I've worn." Whatever your reason for wearing one, our **Mono Top Collection** has the cuts, colors and lengths you'll love.

The nearly invisible caps create the illusion of a natural scalp. And if you're looking to switch things up, most styles allow you to part them on the left, the right, in a zigzag or down the middle. The sky's the limit...at a very down-to-earth price.

### JO ANNE

**Head size:** Average

**Construction:** Mono Top

**Color shown:**  
Creamed Coffee

**Front:** 3.75"

**Crown:** 5.75"

**Side:** 2.25"

**Nape:** 1.75

**Weight:** 2.38 oz. (67.5 g.)

## PUTTING THE EDGE IN WEDGE.

*Popularized by Olympian Dorothy Hamill, the Wedge has always been a favorite of women with thinning hair. And ENVY's soft and cutting-edge versions show why it's still on-trend.*



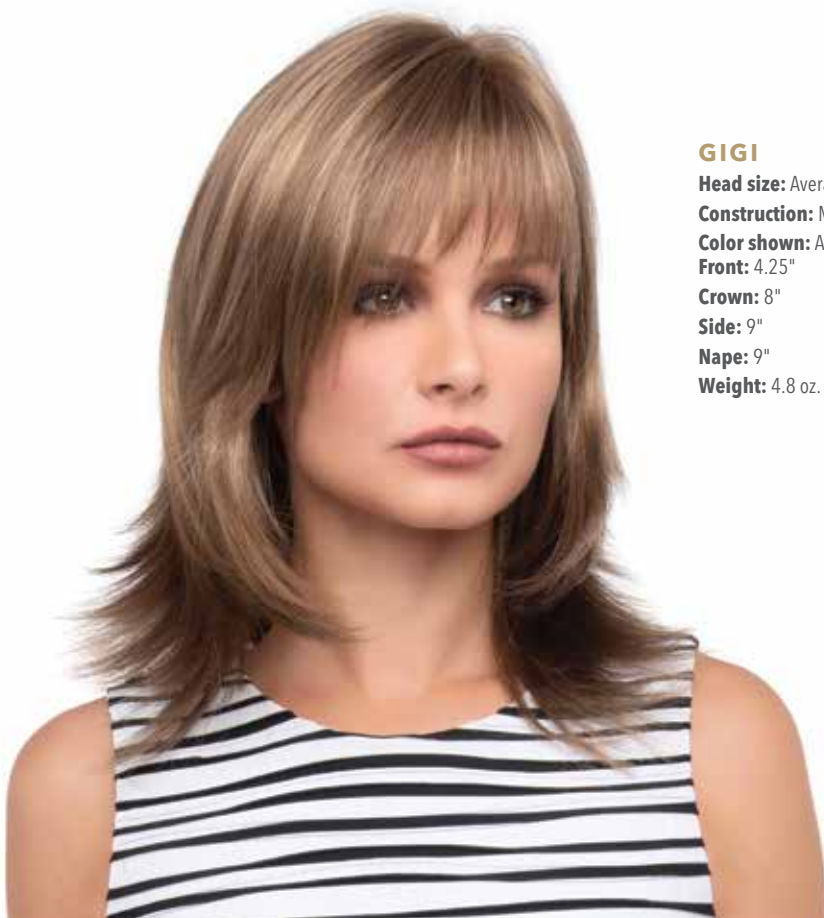
## GETTING TO THE ROOTS OF CONFIDENCE.

*The more realistic  
the wig, the more  
assured women feel.  
And ENVY's darker  
roots with a  
medium base and  
highlights offer the  
multidimensional  
look of real hair.*



### PETITE TIFFANY

**Head size:** Petite  
**Construction:** Mono Top  
**Color shown:**  
Sparkling Champagne  
**Front:** 3.25"  
**Crown:** 3.25"  
**Side:** 2.25"  
**Nape:** 2"  
**Weight:** 1.76 oz. (50 g.)



### GIGI

**Head size:** Average  
**Construction:** Mono Top  
**Color shown:** Almond Breeze  
**Front:** 4.25"  
**Crown:** 8"  
**Side:** 9"  
**Nape:** 9"  
**Weight:** 4.8 oz. (136 g.)



**Wide tooth  
combs are  
your wig's best  
friend**—helping  
to detangle  
fibers (wet or  
dry) without  
stretching them.  
(Just don't ever  
brush a wig  
that's wet  
or damp.)



## CELESTE

**Head size:** Large  
**Construction:** Mono Top  
**Color shown:** Light Blonde  
**Front:** 5"  
**Crown:** 8"  
**Side:** 10.5"  
**Nape:** 14.25"  
**Weight:** 5.05 oz. (143 g.)

## HALEY

**Head size:** Average  
**Construction:** Mono Top  
**Color shown:** Cinnamon Raisin  
**Front:** 4.75"  
**Crown:** 7.5"  
**Side:** 4.75"  
**Nape:** 4"  
**Weight:** 2.83 oz. (80.5 g.)



## the look of your natural scalp.

Our MONO TOP styles feature **(1) individually Hand-Tied Strands** for supremely natural movement and the appearance of natural hair growth, while a **(2) Polyurethane Strip** and **(3) Stretchable Laces** extending from nape to top offer a secure, comfortable fit.



## THE PERFECT PART

*While most of our Mono Top styles are designed with a specific part in mind (to preserve their style and overall density), some can be parted on the left, the right or down the middle and never reveal anything but great style.*

### SAVANNAH

**Head size:** Average

**Construction:** Mono Top

**Color shown:**  
Golden Nutmeg

**Front:** 5"

**Crown:** 5"

**Side:** 4"

**Nape:** 4"

**Weight:** 2.47 oz. (70 g.)



### CARLEY

**Head size:** Average

**Construction:**  
Mono Top

**Color shown:** Light Brown

**Front:** 4"

**Crown:** 11"

**Side:** 6.5"

**Nape:** 4"

**Weight:** 3.49 oz. (99 g.)





### JASMINE

**Head size:** Average  
**Construction:** Mono Top  
**Color shown:** Cinnamon Raisin  
**Front:** 3.5"  
**Crown:** 8"  
**Side:** 6"  
**Nape:** 6"  
**Weight:** 2.9 oz. (82 g.)

### MARITA

**Head size:** Average  
**Construction:** Mono Top  
**Color shown:** Frosted  
**Front:** 3"  
**Crown:** 3.5"  
**Side:** 3"  
**Nape:** 2"  
**Weight:** 2.15 oz. (61 g.)




### MADISON

**Head size:** Average  
**Construction:** Mono Top  
**Color shown:** Almond Breeze  
**Front:** 4.5"  
**Crown:** 12.75"  
**Side:** 8.25"  
**Nape:** 11"  
**Weight:** 3.95 oz. (112 g.)







“Everyone loves  
my hair!”

is a constant refrain  
among customers  
who are delighted  
by the friends  
and family who  
mistake their ENVY  
wig for their real,  
natural hair.

**KITANA**

**Head size:** Average

**Construction:** Mono Top

**Color shown:** Cinnamon Raisin

**Front:** 3.25"

**Crown:** 3.25"

**Side:** 2.25"

**Nape:** 2.25"

**Weight:** 1.76 oz. (50 g.)

**WOW**  
WORDS of WIGDOM

YOU SHOULD NEVER FOREGO COMFORT FOR STYLE, SAYS DESIGNER & CEO ALAN EATON, WHOSE BREATHABLE FRENCH LACE CAPS, STRETCHABLE BASE AND FLEXIBLE EAR TABS OFFER THE KIND OF COMFORT THAT HAS MANY WOMEN FORGETTING THEY'RE WEARING A WIG.

READY-TO-WEAR SYNTHETIC HAIR

# Mono Part

## YOUR DAILY DOSE *of style.*

Once you discover the beauty of our **Mono Part Collection**, you'll never go back. The innovative tops are designed to look like your own scalp, and each strand is hand-tied to simulate natural hair growth from every angle.

With styles to flatter every face, you can don a bob on Monday, a lob on Tuesday, go straight Wednesday, curly Thursday, and show your sweet, swingy, sexy side every day.

### PETITE PAIGE

**Head size:** Petite  
**Construction:** Mono Part  
**Color shown:** Medium Blonde  
**Front:** 4"  
**Crown:** 11"  
**Side:** 6.5"  
**Nape:** 4"  
**Weight:** 3.74 oz. (106 g.)

### KENYA

**Head size:** Average  
**Construction:** Mono Crown  
**Color shown:** Lighter Red  
**Front:** 8.25"  
**Crown:** 7.5"  
**Side:** 7"  
**Nape:** 5.75"  
**Weight:** 3.44 oz. (97.6 g.)

## Petite, PLEASE.

Confidence comes from the perfect fit. And with multiple styles offered in Petite, you'll never have to choose between style and comfort.



### LEYLA

**Head size:** Average  
**Construction:** Mono Part  
**Color shown:** Medium Brown  
**Front:** 3.75"  
**Crown:** 11.25"  
**Side:** 8.25"  
**Nape:** 11.25"  
**Weight:** 3.77 oz. (107 g.)



Subscribe to our blog at [EnvyWigs.com](https://www.envywigs.com) for the latest scoop, styles and ready-to-wear innovation

### MCKENZIE

**Head size:** Average  
**Construction:** Mono Part  
**Color shown:** Black  
**Front:** 5.5"  
**Crown:** 14.5"  
**Side:** 17.75"  
**Nape:** 15.75"  
**Weight:** 5.93 oz. (168 g.)



**believable from any angle.**

Featuring **(1) Hand-Tied Strands** that perfectly mimic natural hair growth and movement and **(2) Wefting** for a more breathable base, our MONO PART styles are designed with a specific part in mind.

**WITH  
LONG  
SOFT  
LAYERS,**

*face-framing  
fringe and its  
breathable Open  
Top construction,  
**CHRISTINE**  
delivers a flirty,  
feminine style  
you can wear  
into the  
wee hours.*

**NEW!**

**CHRISTINE**

**Head size:** Average

**Construction:** Mono Part

**Color shown:** Ginger Cream

**Front:** 6.5"

**Crown:** 7"

**Sides:** 11"

**Nape:** 13.5"

**Weight:** 16.9 oz. (96 g.)

**WOW**  
WORDS of WIGDOM

FOR BEST RESULTS WITH FLIP STYLES (OR WHEN WANTING ADDED VOLUME), DESIGNER & CEO ALAN EATON SUGGESTS HANGING WIGS UPSIDE DOWN FROM THE NAPE—ALLOWING FIBERS TO DRY IN AN UPWARD DIRECTION.



“I wear my ENVY wig almost every day. I get up at dawn and don't have the energy to start styling my hair for work. It helps me look professional at all times.”

—Vicki L., Verified Buyer



#### MILEY

**Head size:** Average

**Construction:** Mono Part

**Color shown:** Sparkling Champagne

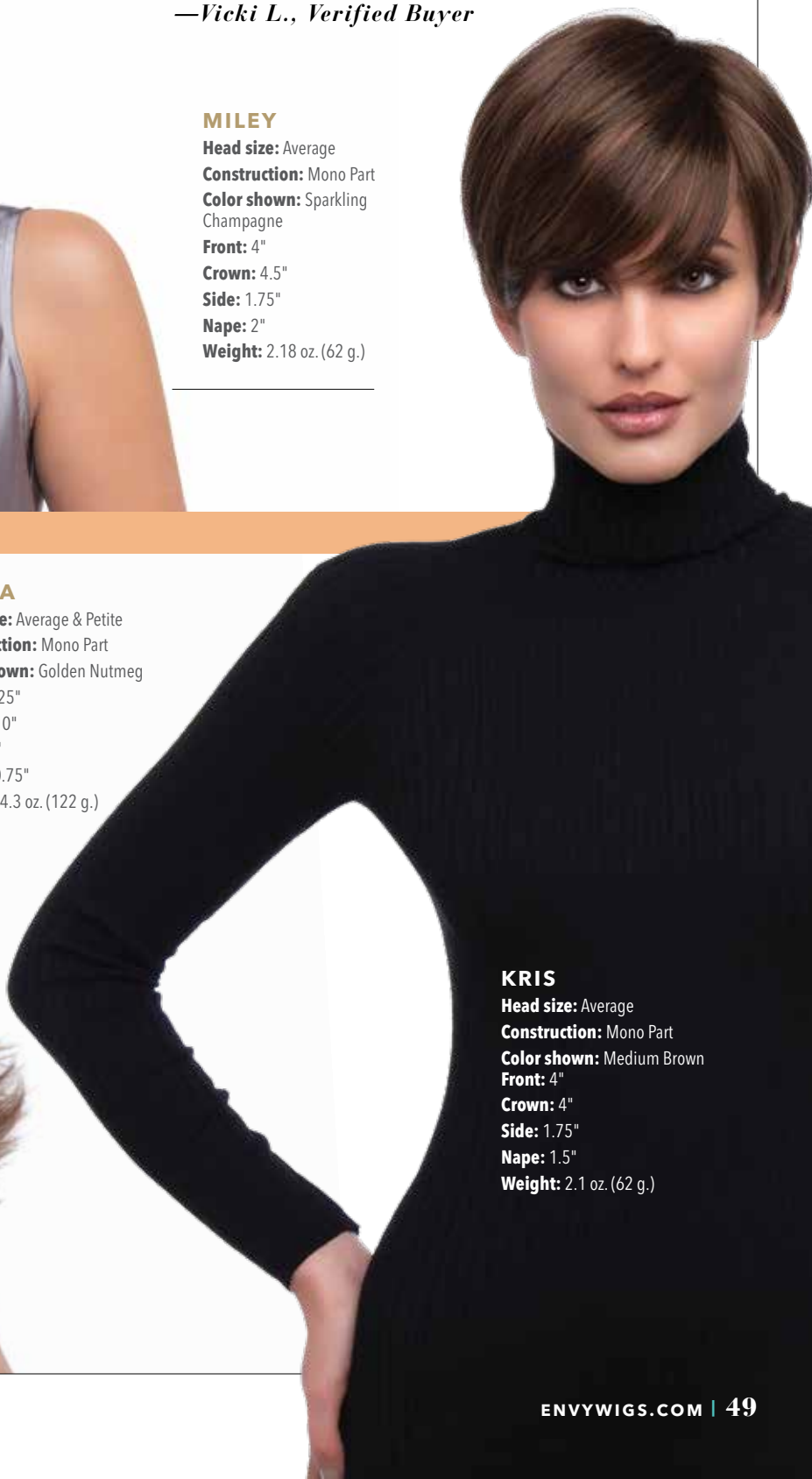
**Front:** 4"

**Crown:** 4.5"

**Side:** 1.75"

**Nape:** 2"

**Weight:** 2.18 oz. (62 g.)



#### NADIA

**Head size:** Average & Petite

**Construction:** Mono Part

**Color shown:** Golden Nutmeg

**Front:** 4.25"

**Crown:** 10"

**Side:** 10"

**Nape:** 10.75"

**Weight:** 4.3 oz. (122 g.)



#### KRIS

**Head size:** Average

**Construction:** Mono Part

**Color shown:** Medium Brown

**Front:** 4"

**Crown:** 4"

**Side:** 1.75"

**Nape:** 1.5"

**Weight:** 2.1 oz. (62 g.)

READY-TO-WEAR SYNTHETIC HAIR

# Lace Front

## THE UNBELIEVABLY *REAL DEAL.*

We believe every woman deserves gorgeous, touchable hair that can be tossed and tousled. And our **Lace Front** styles have the realistic hairlines to do it—right down to those baby hairs that frame the face.

Like more costly custom-made pieces, the graduated density of these styles begins with a finer appearance in the front, gently increasing as it reaches the crown. Part and style like natural hair, run your fingers through your bangs and trust that your **Lace Front** style looks believable, beautiful and enviable...naturally.

### RAVEN

**Head size:** Average

**Construction:** Lace Front

**Color shown:** Lighter Red

**Front:** 3.5"

**Crown:** 4.5"

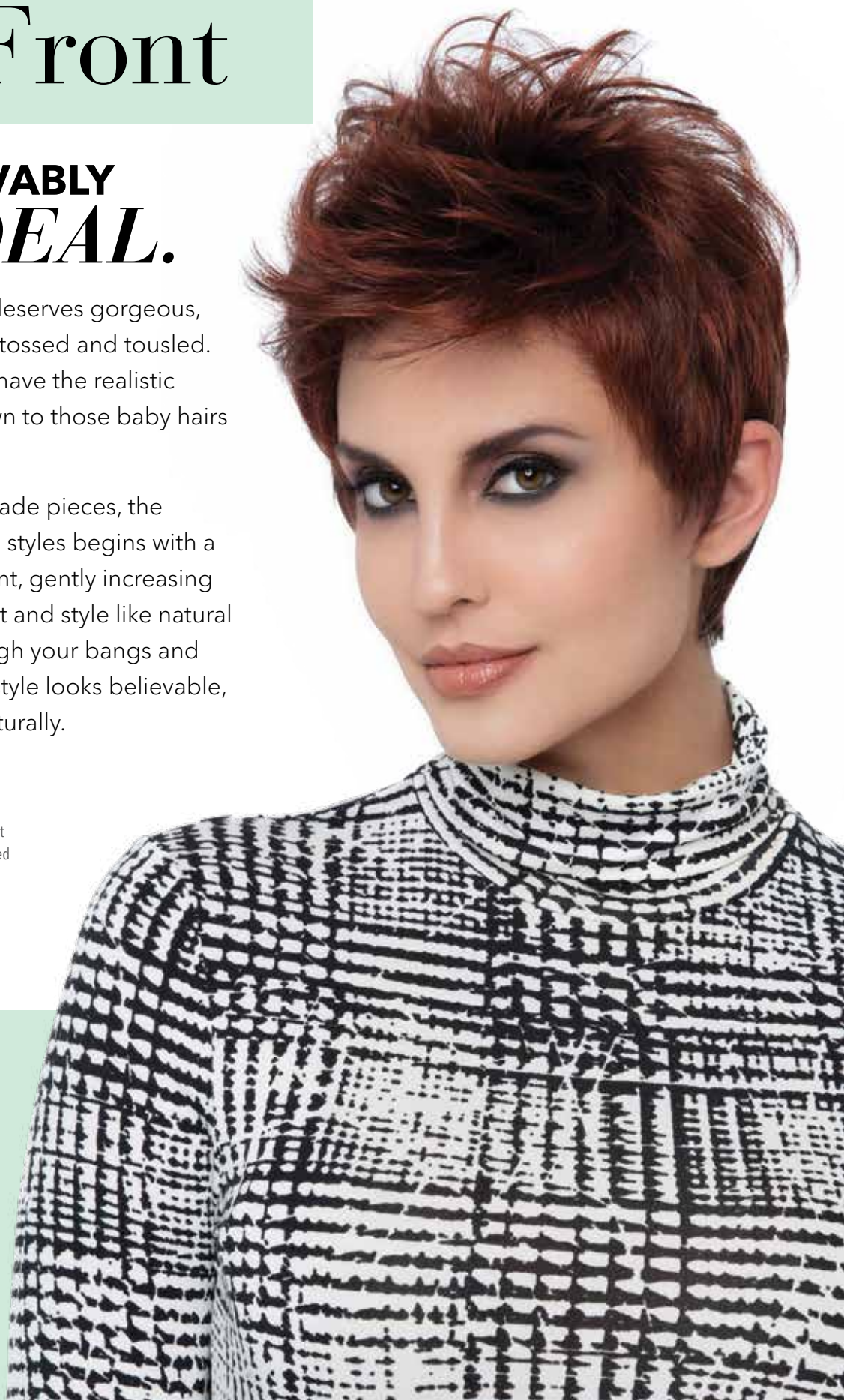
**Side:** 2.25"

**Nape:** 2.25"

**Weight:** 2.15 oz. (61 g.)



Subscribe to our blog  
at **EnvyWigs.com** for  
the latest scoop, styles  
and ready-to-wear  
innovations







### ALANA

**Head size:** Average

**Construction:** Lace Front

**Color Shown:** Mocha Frost

**Front:** 6.25"

**Crown:** 11.5"

**Side:** 8"

**Nape:** 11.5"

**Weight:** 4.87 oz. (138 g.)



**Our Lace Front styles never give you away—** thanks to their **(1) Graduated Density**, beginning with a finer appearance in the front, and virtually invisible, pre-cut **(2) Lace Front** that mimics a natural hairline, right down to the wispy hairs framing your face.



### JADE

**Head size:** Large

**Construction:** Lace Front

**Color shown:** Almond Breeze

**Front:** 8"

**Crown:** 8"

**Side:** 7.5"

**Nape:** 7.5"

**Weight:** 4.06 oz. (115 g.)

READY-TO-WEAR SYNTHETIC HAIR

# Open Top

## AN OPEN AIR *of CONFIDENCE*

What is it about looking good that makes you feel so good about yourself? Designed with style and comfort in mind, our **Open Top Collection** looks and feels fantastic. A delicate layer of gossamer lies softly against the scalp, allowing air to circulate freely. Petal-patterned netting adds stretch and support to every style and is dyed in a complementary shade to ensure complete coverage. Style to the left or the right. Step up the volume for a night on the town. And always step out in complete confidence.

### FRANCESCA

**Head size:** Average

**Construction:** Open Top

**Color shown:**  
Creamed Coffee

**Front:** 3.5"

**Crown:** 6.5"

**Side:** 6.5"

**Nape:** 3.5"

**Weight:** 2.79 oz. (79 g.)

SUBSCRIBE TO OUR BLOG AT

**EnvyWigs.com** for the latest scoop,  
styles and ready-to-wear innovations



## A BETTER- THAN-GOOD HAIR DAY

*is yours with SONIA's bouncy, shoulder-length layers and bangs and a breathable, whisper-soft netting dyed in a complementary shade to ensure complete coverage.*

**NEW!**

**SONIA**

**Head size:** Average

**Construction:** Open Top

**Color shown:** Amaretto Cream

**Front:** 5.5"

**Crown:** 11.5"

**Side:** 11.5"

**Nape:** 10"

**Weight:** 4.5 oz. (130 g.)

### JOLIE

**Head size:** Average  
**Construction:** Open Top  
**Color shown:** Toasted Sesame  
**Front:** 5"  
**Crown:** 11"  
**Side:** 11"  
**Nape:** 9"  
**Weight:** 4.07 oz. (126.6 g.)



### PENELOPE

**Head size:**  
Average & Petite  
**Construction:** Open Top  
**Color shown:** Lighter Red  
**Front:** 2"  
**Crown:** 2.5"  
**Side:** 2"  
**Nape:** 1.75"  
**Weight:** 1.98 oz. (56 g.)



### MILA

**Head size:** Average  
**Construction:** Open Top  
**Color shown:** Mocha Frost  
**Front:** 4.5"  
**Crown:** 6"  
**Side:** 7"  
**Nape:** 6"  
**Weight:** 3.7 oz. (105 g.)





“**Best synthetic wig ever!**  
**I really care about my**  
**hair's appearance and**  
**my ENVY wig can hold its**  
**own with any 'real hair'**  
**wig on the market.**”

—*Barbara G., Verified Buyer*

**GIA**

**Head size:** Average

**Construction:** Open Top

**Color shown:**  
Cinnamon Raisin

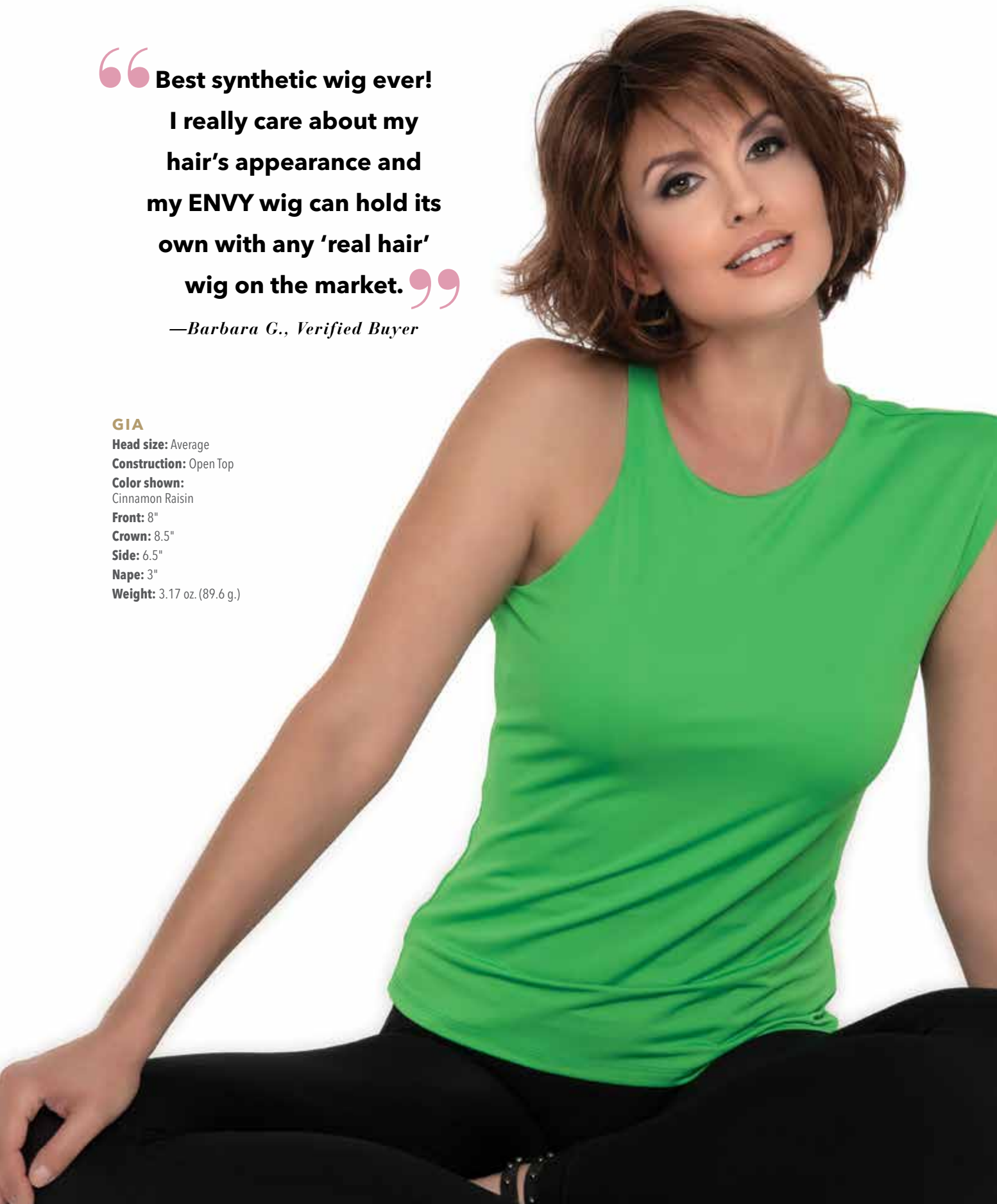
**Front:** 8"

**Crown:** 8.5"

**Side:** 6.5"

**Nape:** 3"

**Weight:** 3.17 oz. (89.6 g.)



**NEW!****KATE****Head size:** Average**Construction:** Open Top**Color shown:** Cinnamon Raisin**Front:** 5"**Crown:** 11"**Side:** 12"**Nape:** 12.5"**Weight:** 6.2 oz. (176 g.)**THE  
PIECE-Y  
BANGS**

*setting off KATE's long smooth layers are flattering to any face shape. And trimming or shaping bangs to your exact specifications can help make your wig indistinguishable from your own natural hair.*



# big on comfort.

Our five Large Styles (BROOKE, CELESTE, JADE, LARGE SHARI & LARGE TIFFANY) feature buckle closures and flexible ear tabs—ensuring every woman can experience the custom comfort and next-level confidence enjoyed with an ENVY wig.

## TIFFANY

**Head size:** Average & Large

**Construction:** Open Top

**Color shown:**  
Sparkling Champagne

**Front:** 3.25"

**Crown:** 3.25"

**Side:** 2.25"

**Nape:** 2"

**Weight:** 1.76 oz. (50 g.)



## VICTORIA

**Head size:** Average

**Construction:** Open Top

**Color shown:**  
Toasted Sesame

**Front:** 4.5"

**Crown:** 3.25"

**Side:** 3.25"

**Nape:** 2.75"

**Weight:** 2.08 oz. (59 g.)



## SHARI

**Head size:** Average & Large

**Construction:** Open Top

**Color shown:** Light Blonde

**Front:** 5"

**Crown:** 3.5"

**Side:** 2.25"

**Nape:** 1.75"

**Weight:** 2.25 oz. (64 g.)



**WOW**  
WORDS of WIGDOM

THOUGH MEG RYAN'S FAMOUS CUT WAS ACTUALLY A QUICK "FIX" (FOLLOWING AN ON-SET MISHAP), THE SHAG REMAINS SUPER-POPULAR, NOTES DESIGNER & CEO ALAN EATON. "AND WHETHER BLUNT-CUT OR WORN WITH BANGS, ENVY HAS THE QUICK FIX FOR ANYONE NEEDING A BOOST OF TEXTURE AND STYLE."

## SHORT CUTS TO STYLE.

*With teasing at the root for natural lift, ENVY's short styles are designed to be versatile. Feathered layers can be styled sleek or spiky, while fringe framing the hairline lets you comb the hair toward the face or away from it.*

### ALYSSA

**Head size:** Average & Petite  
**Construction:** Open Top  
**Color shown:** Golden Nutmeg  
**Front:** 4.25"  
**Crown:** 4"  
**Side:** 3.5"  
**Nape:** 3.5"  
**Weight:** 2.4 oz. (68 g.)



### CHANTEL

**Head size:** Average  
**Construction:** Open Top  
**Color shown:** Frosted  
**Front:** 6.25"  
**Crown:** 4.5"  
**Side:** 5.25"  
**Nape:** 2.5"  
**Weight:** 2.33 oz. (66 g.)



### The Key Word: GENTLE!

To extend your synthetic wig's life, avoid twisting, rubbing and hot water, which can damage it. And use **ENVY Freeze Frame** or hairspray created especially for synthetic hair instead of sprays formulated for human hair, which can cause fibers to deteriorate.





### JAMIE

**Head size:** Average  
**Construction:** Open Top  
**Color shown:** Ginger Cream  
**Front:** 3.5"  
**Crown:** 2.75"  
**Side:** 1.5"  
**Nape:** 1.75"  
**Weight:** 2.12 oz. (60 g.)



### ANGEL

**Head size:** Average  
**Construction:** Open Top  
**Color shown:** Light Blonde  
**Front:** 4.75"  
**Crown:** 4"  
**Side:** 3"  
**Nape:** 2"  
**Weight:** 2.15 oz. (61 g.)

### IVY

**Head size:** Average  
**Construction:** Open Top  
**Color shown:** Almond Breeze  
**Front:** 3.25"  
**Crown:** 2.75"  
**Side:** 2"  
**Nape:** 1.5"  
**Weight:** 2.08 oz. (59 g.)





## More Petites?

ENVY's petite styles—which include PT. JACQUELINE (right), PT. ALYSSA, PT. NADIA, PT. PENELOPE, PT. SCARLETT, PT. PAIGE and PT. TIFFANY—ensure you never have to choose between style and comfort.

### JACQUELINE

**Head size:** Average & Petite

**Construction:** Open Top

**Color shown:** Toasted Sesame

**Front:** 2.75"

**Crown:** 2.75"

**Side:** 2.5"

**Nape:** 1.75"

**Weight:** 1.94 oz. (55 g.)



### KELSEY

**Head size:** Average

**Construction:** Open Top

**Color shown:**  
Ginger Cream

**Front:** 11"

**Crown:** 8.25"

**Side:** 4.5"

**Nape:** 1.75"

**Weight:** 3.10 oz. (88 g.)



### BIANCA

**Head size:** Average

**Construction:** Open Top

**Color shown:**  
Sparkling Champagne

**Front:** 7.75"

**Crown:** 8.5"

**Side:** 8.25"

**Nape:** 5.5"

**Weight:** 3.33 oz.  
(94.4 g.)





“Great right out of the box!  
I love ELLE. My previous one was  
aging from too much love and  
tons of usage. My next one is just  
as great! People ask me for my  
stylist...I say it's ELLE!”

—Maryanne R., Verified Buyer

#### ELLE

**Head size:** Average  
**Construction:** Open Top  
**Color shown:**  
Chocolate Cherry  
**Front:** 4"  
**Crown:** 5.5"  
**Side:** 3.25"  
**Nape:** 3"  
**Weight:** 2.33 oz. (66 g.)



#### BRYN

**Head size:** Average  
**Construction:**  
Open Top  
**Color shown:**  
Lighter Red  
**Front:** 4.5"  
**Crown:** 3"  
**Side:** 3.25"  
**Nape:** 2"  
**Weight:** 2.4 oz. (68 g.)



**rocking a wig  
has never been cooler.**

Literally—thanks to our  
(1) breathable OPEN TOP  
construction. With (2) **Buckle  
Closures** and (3) **Flexible  
Ear Tabs** ensuring a secure,  
near-custom fit, ENVY's  
OPEN TOP wigs are the ones  
you'll forget your wearing.



### KAITLYN

**Head size:** Average  
**Construction:** Open Top  
**Color shown:** Dark Red  
**Front:** 3.25"  
**Crown:** 4.25"  
**Side:** 1.75"  
**Nape:** 1.75"  
**Weight:** 2.43 oz. (69 g.)



### SHEILA

**Head size:** Average  
**Construction:** Open Top  
**Color shown:** Dark Blonde  
**Front:** 4.5"  
**Crown:** 7.5"  
**Side:** 4.75"  
**Nape:** 4"  
**Weight:** 3.1 oz. (88 g.)



### SCARLETT

**Head size:** Average & Petite  
**Construction:** Open Top  
**Color shown:** Sparkling Champagne  
**Front:** 3"  
**Crown:** 7.75"  
**Side:** 5.75"  
**Nape:** 2.5"  
**Weight:** 3.1 oz. (88 g.)





**NEW!**

**SUZI**

**Head size:** Average

**Construction:** Open Top

**Color shown:** Medium Grey

**Front:** 5"

**Crown:** 8"

**Side:** 5"

**Nape:** 4"

**Weight:** 3.2 oz. (91 g.)

**WITH ITS  
FACE-FRAMING  
LAYERS,**

*textural movement  
and low-maintenance  
shape and length, it's  
easy to see why SUZI's  
Textured Bob is one of  
today's must-have cuts.*

100% KANEKALON® FIBER

# Toppers

## BETTER-THAN-GOOD HAIR DAYS.

**ENVY Toppers** add lush volume and coverage where hair extensions can't reach. Made with 100% Kanekalon® fiber and featuring either our breathable Open Top or Lace Front/Mono Top construction, these Toppers are designed to be a go-to solution for the growing numbers affected by hair loss.



### SPIKY TOPPER

**Construction:** Open Top  
**Color shown:** Dark Grey  
**Front:** 3.5"  
**Crown:** 3"  
**Side:** 2.25"  
**Nape:** 2.75"  
**Weight:** 1.06 oz. (30 g.)



### WEDGE TOPPER

**Construction:** Lace Front  
Mono Top  
**Color shown:** Medium Blonde  
**Front:** 3.75"  
**Crown:** 4.75"  
**Side:** 5"  
**Nape:** 5"  
**Weight:** 1.59 oz. (45 g.)



### LAYERED TOPPER

**Construction:** Open Top  
**Color shown:** Light Blonde  
**Front:** 4.38"  
**Crown:** 4.87"  
**Side:** 3.5"  
**Nape:** 3.5"  
**Weight:** 1.13 oz. (32 g.)



## 15 Natural-Looking Colorations

Black, Cinnamon Raisin, Dark Blonde, Dark Brown, Dark Grey, Frosted, Light Blonde, Light Brown, Light Grey, Medium Blonde, Medium Brown, Medium Grey, Mocha Frost, Sparkling Champagne and Toasted Sesame





### BOB TOPPER

**Construction:** Lace Front  
Mono Top  
**Color shown:**  
Toasted Sesame  
**Front:** 5.75"  
**Crown:** 8.75"  
**Side:** 7.5"  
**Nape:** 8.5"  
**Weight:** 1.55 oz. (44 g.)



### LONG TOPPER

**Construction:** Lace Front  
Mono Top  
**Color shown:**  
Medium Brown  
**Front:** 7.5"-15"  
**Crown:** 11"  
**Side:** 13.75"  
**Nape:** 14.75"  
**Weight:** 3.62 oz. (105 g.)

*Before* **AFTER**



100% HUMAN HAIR &  
HUMAN/SYNTHETIC HAIR BLENDS

# Add-Ons

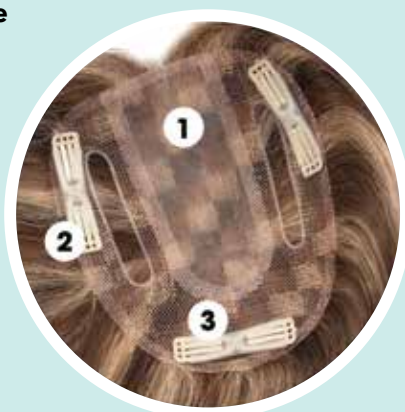
## YOUR ALL-IN-ONE FULLNESS FIX.

Whether looking to add body and coverage to fine or thinning hair or just some extra "oomph," **ENVY's Add-Ons** can be trimmed to blend seamlessly into any hairstyle.

To achieve invisible coverage, position Add-On using its pressure-sensitive clips—tucking edges beneath your natural tresses—then apply volumizing powder or dry shampoo at your hair's roots and fluff to blend edges further.

*ENVY's ADD-ONS feature the same innovations as our wigs—providing the natural look and secure hold that let women wear them with confidence.*

1. Individually **Hand-Tied Strands** simulate natural hair's growth and movement.
2. Our **Monofilament French Lace** base is breathable AND durable.
3. **Pressure-Sensitive Clips** attach to your natural hair for a more secure fit.



### LEFT ADD-ON

Front: 12"

Color shown: Medium Brown

Base: 4.5" x 4.25"

Weight: 1.43 oz. (40.5 g.)



### CROWN ADD-ON

Front: 12"

Color shown: Dark Blonde

Base: 4" x 4"

Weight: 1.0 oz. (28.4 g.)







**TOP  
ADD-ON**

**Front:** 12"

**Color shown:** Light Blonde

**Base:** 5.75" x 5"

**Weight:** 2.1 oz. (59.5 g.)



**PART  
ADD-ON**

**Front:** 12"

**Color shown:** Dark Brown

**Base:** 4.5" x 2.5"

**Weight:** 1.08 oz. (30.6 g.)



**CENTER  
ADD-ON**

**Front:** 12"

**Color shown:** Frosted

**Base:** 4.5" x 4"

**Weight:** 1.34 oz. (38 g.)



**FRONT  
ADD-ON**

**Front:** 12"

**Color shown:** Dark Blonde

**Base:** 3.5" x 4.5"

**Weight:** 1.34 oz. (38 g.)

## *Available Colors*

Black, Dark Blonde, Dark Brown, Dark Grey, Frosted, Light Blonde, Light Grey,  
Medium Blonde, Medium Brown, Medium Grey

*Note: The lightest tones are blended with synthetic strands to achieve the most natural look.*

## ACCESSORIES

# Wig Care

Our full line of accessories is designed to help your customers care for their hair—and to help YOU care for your customers.



### ENVY Hair Detox Anti-Bacterial Spray

Mint oil-infused spray strips away pollutants to bring back your wig's just-out-of-the-box freshness.

Wig Comb



### ENVY Human Hair Care Kit

Without the scalp's natural oils, human hair wigs can dry out. Protect your investment with formulas specifically designed to replenish and soften with every use.



### ENVY Renu & Repair Glosser Spray

Rejuvenates synthetic fibers while adding luster and sheen. 6 oz.

Wig Brush



Wig Stand



### ENVY Wig Travel Kit

Four-piece kit gently cleans, cares for and maintains the life of the hair fibers...wherever life takes you.

Contains 2 oz. each of

Wash-N-Wear Shampoo, Tangle Tamer Leave-In Conditioner, Shine On Lusterizer, Freeze Frame Hair Spray



### Beauty Balm

Acai and pineapple-infused shaping crème adds texture to synthetic or human hair wigs. 2 oz. container.



# Customer Care

From color wheels, mannequins and promotional items to comprehensive education and custom merchandising, ENVY stands by its customers as passionately as its product.

**Turban**



**Nylon  
Cap  
Liner**



**Fishnet  
Cap  
Liner**



**ENVY Ready-to-Wear  
Synthetic Color Ring**



**100% Human Hair  
Color Ring**



**EnvyHair Human  
Hair/Synthetic Blend  
Color Ring**

Our generously sized swatches offer a realistic representation of ENVY's exclusive dimensional colors—and can be held next to skin (or one's own hair) to ensure the best color selection.



**Mannequin**

2022

# ENVY Colors

## 37 exclusive, multidimensional colorations

Created with the latest tone-on-tone blending techniques, ENVY wigs are made with only the finest **100% Kanekalon® fiber**—a superior quality product renowned for holding its shade, shine and shape. Our Human Hair wigs and Hair Add-Ons are made of 100% human hair (the lightest tones have synthetic strands blended in to achieve the most natural-looking colorations).



## Rooted in Reality.

ENVY's "Rooted" colorations—darker roots with a medium base and highlights—offer the multidimensional look of real, salon-worthy hair.

### ROOTED COLORS



Amaretto Cream



Chocolate Cherry



Creamed Coffee



Golden Nutmeg



Sparkling Champagne



Toasted Sesame

### 12 NEW ROOTED COLORS FOR 2022



Butterscotch Shadow



Champagne



Cinnamon Toffee



Espresso



Golden Sandstone



Honey Breeze



Macchiato



Platinum Shadow



Saffron Spice



Sahara Blonde



Silky Beige



Sterling Shadow



ENVYWIGS.COM | 71

| BASIC               |  |  |
|---------------------|--|--|
| Black               |  |  |
| Dark Blonde         |  |  |
| Dark Brown          |  |  |
| Dark Grey           |  |  |
| Dark Red            |  |  |
| Frosted             |  |  |
| Light Blonde        |  |  |
| Light Brown         |  |  |
| Light Grey          |  |  |
| Lighter Red         |  |  |
| Medium Blonde       |  |  |
| Medium Brown        |  |  |
| Medium Grey         |  |  |
| HIGHLIGHTED         |  |  |
| Almond Breeze       |  |  |
| Chocolate Caramel   |  |  |
| Cinnamon Raisin     |  |  |
| Ginger Cream        |  |  |
| Mocha Frost         |  |  |
| Vanilla Butter      |  |  |
| ROOTED              |  |  |
| Amaretto Cream      |  |  |
| Butterscotch Shadow |  |  |
| Champagne Shadow    |  |  |
| Chocolate Cherry    |  |  |
| Cinnamon Toffee     |  |  |
| Creamed Coffee      |  |  |
| Espresso            |  |  |
| Golden Nutmeg       |  |  |
| Golden Sandstone    |  |  |
| Honey Breeze        |  |  |
| Macchiato           |  |  |
| Platinum Shadow     |  |  |
| Saffron Spice       |  |  |
| Sahara Blonde       |  |  |
| Silky Beige         |  |  |
| Sparkling Champagne |  |  |
| Sterling Shadow     |  |  |
| Toasted Sesame      |  |  |



|                    | BASIC |             |            |           |          |         |              |             |            |             |               |              |             | HIGHLIGHTED   |                   |                 |              |             |                |                |                     |                  |                  |                 |                |          | ROOTED        |                  |              |           |                 |               |               |             |                     |                 |                |  |  |
|--------------------|-------|-------------|------------|-----------|----------|---------|--------------|-------------|------------|-------------|---------------|--------------|-------------|---------------|-------------------|-----------------|--------------|-------------|----------------|----------------|---------------------|------------------|------------------|-----------------|----------------|----------|---------------|------------------|--------------|-----------|-----------------|---------------|---------------|-------------|---------------------|-----------------|----------------|--|--|
|                    | Black | Dark Blonde | Dark Brown | Dark Grey | Dark Red | Frosted | Light Blonde | Light Brown | Light Grey | Lighter Red | Medium Blonde | Medium Brown | Medium Grey | Almond Breeze | Chocolate Caramel | Cinnamon Raisin | Ginger Cream | Mocha Frost | Vanilla Butter | Amaretto Cream | Butterscotch Shadow | Champagne Shadow | Chocolate Cherry | Cinnamon Toffee | Creamed Coffee | Espresso | Golden Nutmeg | Golden Sandstone | Honey Breeze | Macchiato | Platinum Shadow | Saffron Spice | Sahara Blonde | Silky Beige | Sparkling Champagne | Sterling Shadow | Toasted Sesame |  |  |
| Miley, 49          |       |             |            |           |          |         |              |             |            |             |               |              |             |               |                   |                 |              |             |                |                |                     |                  |                  |                 |                |          |               |                  |              |           |                 |               |               |             |                     |                 |                |  |  |
| Nadia, 49          |       |             |            |           |          |         |              |             |            |             |               |              |             |               |                   |                 |              |             |                |                |                     |                  |                  |                 |                |          |               |                  |              |           |                 |               |               |             |                     |                 |                |  |  |
| Olivia, 15         |       |             |            |           |          |         |              |             |            |             |               |              |             |               |                   |                 |              |             |                |                |                     |                  |                  |                 |                |          |               |                  |              |           |                 |               |               |             |                     |                 |                |  |  |
| Ophelia, 10        |       |             |            |           |          |         |              |             |            |             |               |              |             |               |                   |                 |              |             |                |                |                     |                  |                  |                 |                |          |               |                  |              |           |                 |               |               |             |                     |                 |                |  |  |
| Penelope, 54       |       |             |            |           |          |         |              |             |            |             |               |              |             |               |                   |                 |              |             |                |                |                     |                  |                  |                 |                |          |               |                  |              |           |                 |               |               |             |                     |                 |                |  |  |
| Pt. Alyssa, 58     |       |             |            |           |          |         |              |             |            |             |               |              |             |               |                   |                 |              |             |                |                |                     |                  |                  |                 |                |          |               |                  |              |           |                 |               |               |             |                     |                 |                |  |  |
| Pt. Jacqueline, 60 |       |             |            |           |          |         |              |             |            |             |               |              |             |               |                   |                 |              |             |                |                |                     |                  |                  |                 |                |          |               |                  |              |           |                 |               |               |             |                     |                 |                |  |  |
| Pt. Nadia, 49      |       |             |            |           |          |         |              |             |            |             |               |              |             |               |                   |                 |              |             |                |                |                     |                  |                  |                 |                |          |               |                  |              |           |                 |               |               |             |                     |                 |                |  |  |
| Pt. Penelope, 54   |       |             |            |           |          |         |              |             |            |             |               |              |             |               |                   |                 |              |             |                |                |                     |                  |                  |                 |                |          |               |                  |              |           |                 |               |               |             |                     |                 |                |  |  |
| Pt. Paige, 46      |       |             |            |           |          |         |              |             |            |             |               |              |             |               |                   |                 |              |             |                |                |                     |                  |                  |                 |                |          |               |                  |              |           |                 |               |               |             |                     |                 |                |  |  |
| Pt. Scarlett, 62   |       |             |            |           |          |         |              |             |            |             |               |              |             |               |                   |                 |              |             |                |                |                     |                  |                  |                 |                |          |               |                  |              |           |                 |               |               |             |                     |                 |                |  |  |
| Pt. Tiffany, 41    |       |             |            |           |          |         |              |             |            |             |               |              |             |               |                   |                 |              |             |                |                |                     |                  |                  |                 |                |          |               |                  |              |           |                 |               |               |             |                     |                 |                |  |  |
| Raven, 50          |       |             |            |           |          |         |              |             |            |             |               |              |             |               |                   |                 |              |             |                |                |                     |                  |                  |                 |                |          |               |                  |              |           |                 |               |               |             |                     |                 |                |  |  |
| Rose, 27           |       |             |            |           |          |         |              |             |            |             |               |              |             |               |                   |                 |              |             |                |                |                     |                  |                  |                 |                |          |               |                  |              |           |                 |               |               |             |                     |                 |                |  |  |
| Roxie, 25          |       |             |            |           |          |         |              |             |            |             |               |              |             |               |                   |                 |              |             |                |                |                     |                  |                  |                 |                |          |               |                  |              |           |                 |               |               |             |                     |                 |                |  |  |
| Rylee, 29          |       |             |            |           |          |         |              |             |            |             |               |              |             |               |                   |                 |              |             |                |                |                     |                  |                  |                 |                |          |               |                  |              |           |                 |               |               |             |                     |                 |                |  |  |
| Sam, 28            |       |             |            |           |          |         |              |             |            |             |               |              |             |               |                   |                 |              |             |                |                |                     |                  |                  |                 |                |          |               |                  |              |           |                 |               |               |             |                     |                 |                |  |  |
| Savannah, 43       |       |             |            |           |          |         |              |             |            |             |               |              |             |               |                   |                 |              |             |                |                |                     |                  |                  |                 |                |          |               |                  |              |           |                 |               |               |             |                     |                 |                |  |  |
| Scarlett, 62       |       |             |            |           |          |         |              |             |            |             |               |              |             |               |                   |                 |              |             |                |                |                     |                  |                  |                 |                |          |               |                  |              |           |                 |               |               |             |                     |                 |                |  |  |
| Selena, 21         |       |             |            |           |          |         |              |             |            |             |               |              |             |               |                   |                 |              |             |                |                |                     |                  |                  |                 |                |          |               |                  |              |           |                 |               |               |             |                     |                 |                |  |  |
| Shari, 57          |       |             |            |           |          |         |              |             |            |             |               |              |             |               |                   |                 |              |             |                |                |                     |                  |                  |                 |                |          |               |                  |              |           |                 |               |               |             |                     |                 |                |  |  |
| Sheena, 28         |       |             |            |           |          |         |              |             |            |             |               |              |             |               |                   |                 |              |             |                |                |                     |                  |                  |                 |                |          |               |                  |              |           |                 |               |               |             |                     |                 |                |  |  |
| Sheila, 62         |       |             |            |           |          |         |              |             |            |             |               |              |             |               |                   |                 |              |             |                |                |                     |                  |                  |                 |                |          |               |                  |              |           |                 |               |               |             |                     |                 |                |  |  |
| Shyla, 23          |       |             |            |           |          |         |              |             |            |             |               |              |             |               |                   |                 |              |             |                |                |                     |                  |                  |                 |                |          |               |                  |              |           |                 |               |               |             |                     |                 |                |  |  |
| Sonia, 53          |       |             |            |           |          |         |              |             |            |             |               |              |             |               |                   |                 |              |             |                |                |                     |                  |                  |                 |                |          |               |                  |              |           |                 |               |               |             |                     |                 |                |  |  |
| Sophia, 5          |       |             |            |           |          |         |              |             |            |             |               |              |             |               |                   |                 |              |             |                |                |                     |                  |                  |                 |                |          |               |                  |              |           |                 |               |               |             |                     |                 |                |  |  |
| Suzi, 63           |       |             |            |           |          |         |              |             |            |             |               |              |             |               |                   |                 |              |             |                |                |                     |                  |                  |                 |                |          |               |                  |              |           |                 |               |               |             |                     |                 |                |  |  |
| Tandi,12           |       |             |            |           |          |         |              |             |            |             |               |              |             |               |                   |                 |              |             |                |                |                     |                  |                  |                 |                |          |               |                  |              |           |                 |               |               |             |                     |                 |                |  |  |
| Taryn, 15          |       |             |            |           |          |         |              |             |            |             |               |              |             |               |                   |                 |              |             |                |                |                     |                  |                  |                 |                |          |               |                  |              |           |                 |               |               |             |                     |                 |                |  |  |
| Tasha, 25          |       |             |            |           |          |         |              |             |            |             |               |              |             |               |                   |                 |              |             |                |                |                     |                  |                  |                 |                |          |               |                  |              |           |                 |               |               |             |                     |                 |                |  |  |
| Taylor, 27         |       |             |            |           |          |         |              |             |            |             |               |              |             |               |                   |                 |              |             |                |                |                     |                  |                  |                 |                |          |               |                  |              |           |                 |               |               |             |                     |                 |                |  |  |
| Tiffany, 57        |       |             |            |           |          |         |              |             |            |             |               |              |             |               |                   |                 |              |             |                |                |                     |                  |                  |                 |                |          |               |                  |              |           |                 |               |               |             |                     |                 |                |  |  |
| Tina, 31           |       |             |            |           |          |         |              |             |            |             |               |              |             |               |                   |                 |              |             |                |                |                     |                  |                  |                 |                |          |               |                  |              |           |                 |               |               |             |                     |                 |                |  |  |
| Tinsley, 35        |       |             |            |           |          |         |              |             |            |             |               |              |             |               |                   |                 |              |             |                |                |                     |                  |                  |                 |                |          |               |                  |              |           |                 |               |               |             |                     |                 |                |  |  |
| Veronica, 19       |       |             |            |           |          |         |              |             |            |             |               |              |             |               |                   |                 |              |             |                |                |                     |                  |                  |                 |                |          |               |                  |              |           |                 |               |               |             |                     |                 |                |  |  |
| Victoria, 57       |       |             |            |           |          |         |              |             |            |             |               |              |             |               |                   |                 |              |             |                |                |                     |                  |                  |                 |                |          |               |                  |              |           |                 |               |               |             |                     |                 |                |  |  |
| Wendi, 36          |       |             |            |           |          |         |              |             |            |             |               |              |             |               |                   |                 |              |             |                |                |                     |                  |                  |                 |                |          |               |                  |              |           |                 |               |               |             |                     |                 |                |  |  |
| Whitney, 6         |       |             |            |           |          |         |              |             |            |             |               |              |             |               |                   |                 |              |             |                |                |                     |                  |                  |                 |                |          |               |                  |              |           |                 |               |               |             |                     |                 |                |  |  |
| Yuri, 10           |       |             |            |           |          |         |              |             |            |             |               |              |             |               |                   |                 |              |             |                |                |                     |                  |                  |                 |                |          |               |                  |              |           |                 |               |               |             |                     |                 |                |  |  |
| Zoe, 13            |       |             |            |           |          |         |              |             |            |             |               |              |             |               |                   |                 |              |             |                |                |                     |                  |                  |                 |                |          |               |                  |              |           |                 |               |               |             |                     |                 |                |  |  |

2022

# Style Index



Abbey, 23



Alana, 51



Alyssa, 58



Amber, 31



Amelia, 5



Amy, 32



Angel, 59



Angie, 29



Aria, 9



Ashley, 36



Aubrey, 17



Ava, 10



Belinda, 33



Bianca, 60



Bobbi, 31



Brianna, 30



Brittaney, 26



Brooke, 26



Bryn, 61



Carley, 43



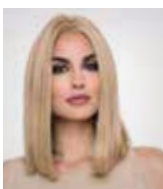
Carrisa, 39



Celeste, 42



Chantel, 58



Chelsea, 9



Chloe, 39



Christine, 48



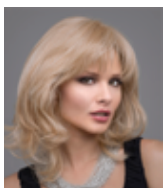
Coco, 33



Coti, 18



Dakota, 38



Danielle, 19



Delaney, 30



Destiny, 12



Elle, 61



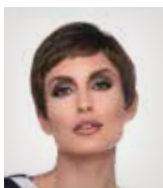
Emma, 12



Erica, 18



Eve, 35



Fiona, 14



Flame, 20



Francesca, 52



Gia, 55



Gigi, 41



Grace, 17



Haley, 42



Hannah, 4



Harmony, 35



Harper, 33



Heather, 20



Isabella, 11



Ivy, 59



Jacqueline, 60



Jade, 51



Jamie, 59



Jane, 24



Jasmine, 44



Jeannie, 29



Jo Anne, 40





Jolie, 54



Jordan, 7



Joy, 37



Juliet, 39



Kaitlyn, 62



Kate, 56



Kelsey, 60



Kenya, 46



Kimberly, 25



Kitana, 45



Kris, 49



Krista, 8



Kylie, 22



Lrg. Tiffany, 57



Lrg. Shari, 57



Leyla, 47



London, 34



Lynsey, 16



Madison, 44



Marita, 44



Maya, 27



McKenzie, 47



Micki, 30



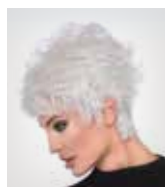
Mila, 54



Miley, 49



Nadia, 49



Olivia, 15



Ophelia, 10



Penelope, 54



Pt. Alyssa, 58



Pt. Jacqueline, 60



Pt. Nadia, 49



Pt. Penelope, 54



Pt. Paige, 46



Pt. Scarlett, 62



Pt. Tiffany, 41



Raven, 50



Rose, 27



Roxie, 25



Rylee, 29



Sam, 28



Savannah, 43



Scarlett, 62



Selena, 21



Shari, 57



Sheena, 28



Sheila, 62



Shyla, 23



Sonia, 53



Sophia, 5



Suzi, 63



Tandi, 12



Taryn, 15



Tasha, 25



Taylor, 27



Tiffany, 57



Tina, 31



Tinsley, 35



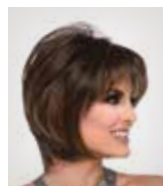
Veronica, 19



Victoria, 57



Wendi, 36



Whitney, 6



Yuri, 10



Zoey, 13



AMY in Toasted Sesame

envy  
BY ALAN EATON



5292 EAST 65TH STREET • INDIANAPOLIS, IN 46220 • 877-906-6478