

LIVE
YOUR
HAIR
TO THE
FULLEST



ANNIVERSARY
CELEBRATION
2021

Envy[®]
By Alan Eaton
Wigs & Hair Add-Ons

A note of thanks.

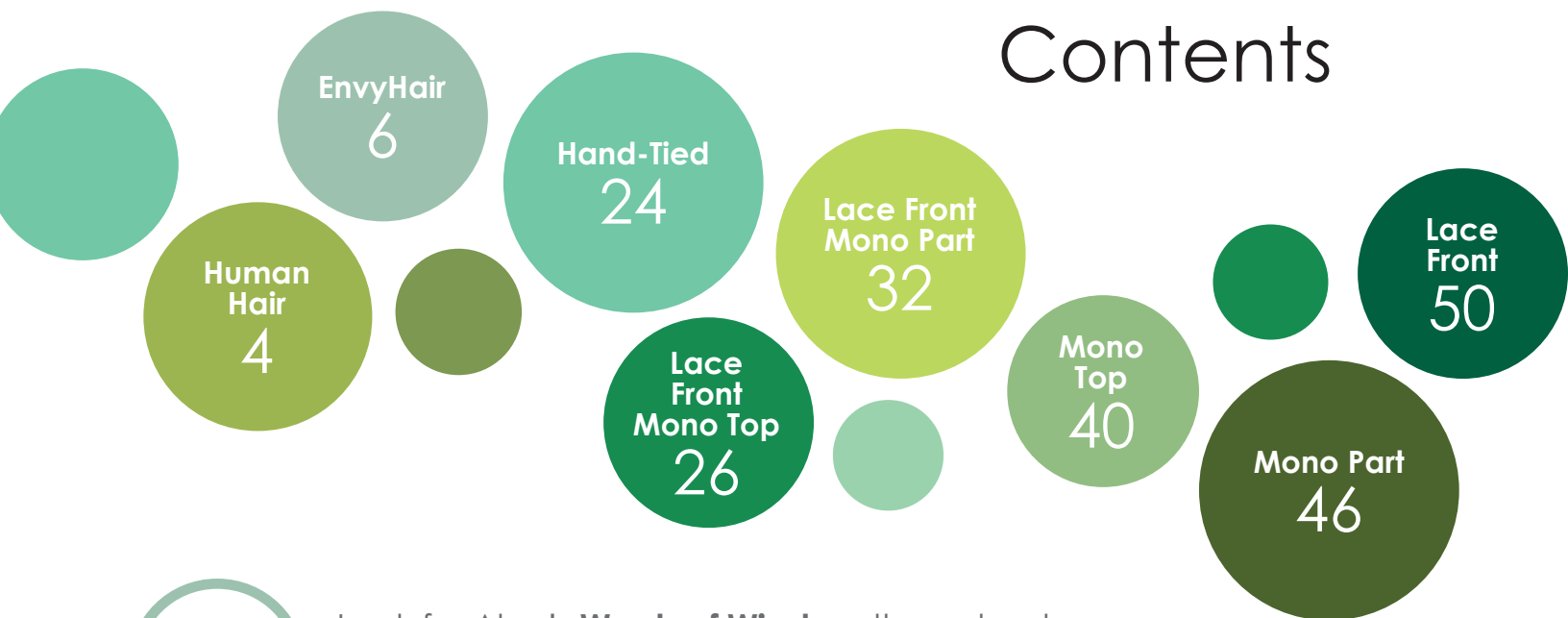
ENVY is marking its 10th full year in business...and it looks to be our best ever! But I have to thank you for the resilience you showed over the past year. I've often said it's personal connections that make my work worthwhile—and I thank you AND your customers for continuing to make me feel "connected."

With 10 NEW on-trend styles, and an emphasis on key selling points, ENVY's latest catalog is designed to help you make the most of today's growing wig craze. I hope it inspires all of us to look to the future. Just as you have inspired me.

Here's to a brighter 2021, and beyond.

Sincerely,
Alan Eaton
Designer & CEO, ENVY

Contents



Human Hair	4
EnvyHair	6
Hand-Tied	24
Lace Front Mono Top	26
Lace Front Mono Part	32
Mono Top	40
Mono Part	46
Lace Front	50



Look for Alan's **Words of Wigdom** throughout our catalog for expert styling tips, trends, and product features.



Toppers
64

Hair
Add-Ons
66

Accessories
68

Color
Chart
70

Color
Index
71

Style
Index
74

Open
Top
52

Shown on this page: KRISTA;
cover: GIA; back cover: ERICA

100%
Human
Hair

Hannah

Head size: Average

Construction: Mono Top, Lace Front, Hand-Tied Sides and Back

Color shown: Dark Blonde

Front: 8"

Crown: 9"

Side: 8"

Nape: 8"

Weight: 2.57 oz. (73 g.)

HAND-SELECTED. HAND-TIED. HANDS DOWN, THE BEST EVER.

Designer Alan Eaton understands the importance hair plays in defining ourselves. And his **Human Hair Collection** redefines what's possible in natural-looking wigs.

Every strand has been hand selected by Alan and his expert team to ensure the ultimate in rich color, unique texture, exquisite body, and health. And our unique cap offers a near-custom fit and look.

Blow dried, flat ironed, or set in rollers—ENVY's **Human Hair Collection** offers the same stylability as your own hair, giving women a glamorous lift and next-level confidence they never knew could come from wearing a wig.



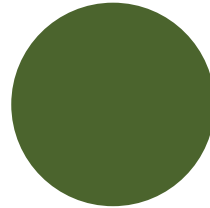
FEATURES

- **100% Hand-Tied** strands allow for supremely natural movement—with an ultra-soft, comfortable cap ideal for sensitive scalps.
- **Ready-to-Wear Lace Front** that's virtually invisible for a natural-looking hairline and off-the-face styling versatility.
- **Full Monofilament Top** creates the appearance of natural hair growth at the part, allowing for parting versatility.
- **A Near-Custom Fit** with built-in poly tabs and strips for next-level comfort and confidence.



Sophia

Head size: Average
Construction: Mono Top, Lace Front, Hand-Tied Sides and Back
Color shown: Medium Brown
Front: 12"
Crown: 16"
Side: 13"
Nape: 10"
Weight: 4.6 oz. (131 g.)



Amelia

Head size: Average
Construction: Mono Top, Lace Front, Hand-Tied Sides and Back
Color shown: Medium Blonde
Front: 7.75"
Crown: 7.75"
Side: 5"
Nape: 2.5"
Weight: 2.57 oz. (73 g.)

“The best purchase I’ve made since my hair loss began. The cap is so comfortable I forget I’m wearing a wig. The hair is soft and feels better than my own did.”

— Verified Buyer

EnvyHair™

HUMAN HAIR BLEND

Jordan

Head size: Average
Construction: EnvyHair
Lace Front Mono Part
Color shown: Golden
Nutmeg
Front: 9.5"
Crown: 3"-11"
Side: 4.5"-8.5"
Nape: 3.5"
Weight: 3.77oz. (107 gr.)

NEW

JORDAN's on-trend, textured bob is the perfect way to get in on another big 2021 trend, "The Chop"—a liberating desire to go shorter after a year of locked-down locks.

30% HUMAN HAIR. 70% SYNTHETIC HAIR. 100% YOU.

ENVY's exclusive human hair blend looks, feels, moves, and styles just like the real thing. Every silky strand is styled into the softest, lightest, head-hugging cap for a cool, comfortable fit on even the most sensitive scalps, while its built-in moisture-control can withstand temperatures up to 356°F (180°C)—far exceeding other heat-friendly wigs.

Priced about 1/3 less than 100% human hair products—and with 10 styles available in our more affordable capless construction—**EnvyHair™** makes the high-end, high-priced look of human hair more accessible than ever.



Whitney

Head size: Average
Construction: EnvyHair Capless
Color shown: Chocolate Caramel
Front: 5.75"
Crown: 5.75"
Side: 6.25"
Nape: 3.75"
Weight: 3.03 oz. (86 g.)



Zoey

Head size: Average
Construction: EnvyHair Mono Top, Lace Front, Hand-Tied Sides and Back
Color shown: Light Blonde
Front: 7.75"
Crown: 10.25"
Side: 9.25"
Nape: 8.25"
Weight: 3.95 oz. (112.1 g.)



SMART CONSTRUCTION. SMART STYLE.

EnvyHair™ wigs are smartly constructed in one of three ways:

- **Mono Top**—For more styling flexibility, allowing you to style to either side.
- **Capless**—For scalp-hugging contours that lie beautifully.
- **Fully Hand-Tied**—To move like natural hair; with some featuring a lace front for the most realistic hairline available.



Lynsey

Head size: Average
Construction: EnvyHair Mono Top, Lace Front, Wefted Sides and Back
Color shown: Dark Blonde
Front: 9.5"
Crown: 10"
Side: 7.75"
Nape: 7"
Weight: 3.84 oz. (109 g.)



Kylie

Head size: Average
Construction: EnvyHair Mono Top, Hand-Tied Sides and Back, Silk Chiffon Lining
Color shown: Almond Breeze
Front: 3.25"
Crown: 6.25"
Side: 4.25"
Nape: 3.75"
Weight: 2.82 oz. (80 g.)



NEW

Smile ear to ear in the salon-inspired KRISTA—featuring an Ear-To-Ear Lace Front for the most believable and realistic hairline available.

Krista

Head size: Average

Construction: EnvyHair Ear-to-Ear Lace Front Mono Top, Wefted Sides and Back

Color shown: Toasted Sesame

Front: 6.5"- 8.5"

Crown: 12"-16"

Side: 12"-17"

Nape: 19"

Weight: 7.32 oz. (207.5 g.)



NEW

Bouncy layers and touchable curl make ISABELLA a great bob. While the Ear-to-Ear Lace Front makes it look like your own natural hair.



Ophelia

Head size: Average
Construction: EnvyHair Capless
Color shown: Toasted Sesame
Front: 4"
Crown: 4.75"
Side: 3"
Nape: 2"
Weight: 2.18 oz. (62 g.)

Isabella

Head size: Average
Construction: EnvyHair Ear-to-Ear Lace Front Mono Top, Wefted Sides and Back
Color shown: Sparkling Champagne
Front: 10"
Crown: 9"-10"
Side: 8"-9"
Nape: 7.25"
Weight: 5.75 oz. (162 g.)

“It feels like I’m wearing nothing,” one buyer told us. With the guaranteed comfort of our ultra-soft silk chiffon cap, it’s a sentiment we hear again and again.



Taryn

Head size: Average
Construction: EnvyHair Mono Top, Wefted Sides and Back
Color shown: Dark Brown
Front: 3"
Crown: 13"
Side: 11"
Nape: 11"
Weight: 6.0 oz. (170 g.)

Abbey

Head size: Average
Construction: EnvyHair Mono Top, Hand-Tied Sides and Back, Silk Chiffon Lining
Color shown: Black
Front: 7"
Crown: 7"
Side: 5.5"
Nape: 2"
Weight: 2.93 oz. (83 g.)





Ava

Head size: Average
Construction: EnvyHair Capless, Mono Part, Lace Front
Color shown: Light Brown
Front: 7.5"
Crown: 11.5"
Side: 8.5"
Nape: 11.25"
Weight: 5.18 oz. (147 g.)

Yuri

Head size: Average
Construction: EnvyHair Capless
Color shown: Chocolate Cherry
Front: 4"
Crown: 6.75"
Side: 5.75"
Nape: 1.5"
Weight: 3.31 oz. (94 g.)



Emma

Head size: Average
Construction: Lace Front EnvyHair
Color shown: Creamed Coffee
Front: 3"-13"
Crown: 3"-12.5"
Side: 7.5"-11"
Nape: 5"
Weight: 4.59 oz. (130 g.)

NEW

The soft, face-framing waves of EMMA's textured "lob" (longer bob) are the epitome of non-traditional chic.

EnvyHair™

HUMAN HAIR BLEND

WōW

WORDS OF WIGDOM

The “Grey Hair, Don’t Care” trend—which saw women embracing their gray—is stronger than ever. And not just with the over-50 crowd. “Silver is chic, edgy and looks great on almost anyone,” says Alan, who offers nearly every EnvyHair™ and synthetic style in 3 multi-dimensional grey shades.



Olivia

Head size: Average

Construction: EnvyHair Capless

Color shown: Light Grey

Front: 3.75"

Crown: 4"

Side: 2.75"

Nape: 1.75"

Weight: 2.53 oz. (72 g.)

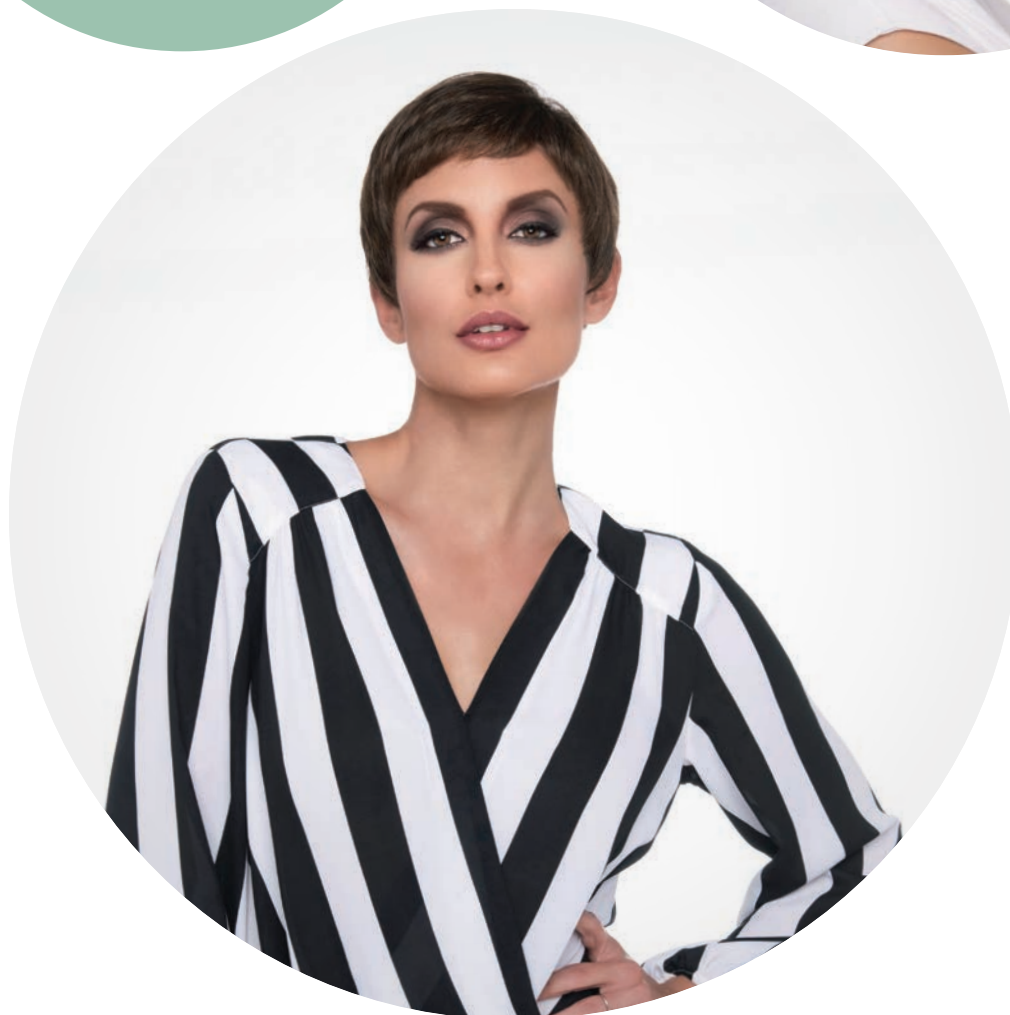
Destiny

Head size: Average
Construction: EnvyHair Mono Top, Hand-Tied Sides and Back
Color shown: Medium Brown
Front: 2.25"
Crown: 3.75"
Side: 2.25"
Nape: 2"
Weight: 1.64 oz. (46.4 g.)



PICK YOUR PIXIE.

Less “bangy.” Extra short and brow-grazing. Or slightly longer than the norm. The hotter-than-ever Pixie Cut can be worn many ways. And ENVY’s multiple styles make trying the trend easy—without ever having to cut your hair.



Fiona

Head size: Average
Construction: EnvyHair Capless, Mono Crown, Lace Front
Color shown: Medium Brown
Front: 2"
Crown: 4"
Side: 2"
Nape: 2"
Weight: 2.29 oz. (65 g.)

MULTI-DIMENSIONAL & AVAILABLE IN 25 SHADES

Created with the latest tone-on-tone blending techniques, **EnvyHair** wigs are made with only the finest fibers that hold their shades, shine, and shape even better than 100% human hair.



Grace

Head size: Average

Construction: EnvyHair Mono Top, Hand-Tied Sides and Back

Color shown: Dark Red

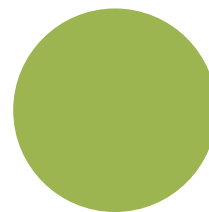
Front: 4"

Crown: 7"

Side: 6"

Nape: 6.75"

Weight: 3.53 oz.
(100 g.)



Chelsea

Head size: Average

Construction: EnvyHair Mono Top, Lace Front, Hand-Tied Sides and Back

Color shown: Medium Blonde

Front: 15.5"

Crown: 12.25"

Side: 10.75"

Nape: 5.75"

Weight: 4.78 oz. (135.5 g.)

Aubrey

Head size: Average

Construction: EnvyHair
Mono Top, Hand-Tied
Sides and Back

Color shown:
Medium Brown

Front: 4.5"

Crown: 4.25"

Side: 4.25"

Nape: 3.25"

Weight: 2.52 oz. (71.5 g.)



Selena

Head size: Average
Construction: EnvyHair Capless
Color shown: Dark Red
Front: 7"
Crown: 11"
Side: 8 to 10.5"
Nape: 12.75"
Weight: 4.93 oz. (140 g.)



Flame

Head size: Average
Construction: EnvyHair Capless,
 Mono Crown
Color shown: Cinnamon Raisin
Front: 4 to 5.25"
Crown: 5.5"
Side: 3"
Nape: 1.75"
Weight: 2.5 oz. (71 g.)

“My own hair was extremely thin so I decided on an ENVY wig that was closest to my color and it was amazing how similar it was to my own hair. A winner!”

— Cyndy, Verified Buyer



Veronica

Head size: Average
Construction: EnvyHair Mono Top, Lace Front, Hand-Tied Sides and Back
Color shown: Medium Brown
Front: 11.25"
Crown: 15.5"
Side: 14.5"
Nape: 12"
Weight: 5.84 oz. (165.5 g.)



Shyla

Head size: Average
Construction: EnvyHair Mono Top, Hand-Tied Sides and Back, Silk Chiffon Lining
Color shown: Toasted Sesame
Front: 5.25"
Crown: 7.5"
Side: 5"
Nape: 2.25"
Weight: 2.61 oz. (74 g.)



Coti

Head size: Average
Construction: EnvyHair Mono Top, Lace Front, Hand-Tied Sides and Back
Color shown: Light Brown
Front: 4.25"
Crown: 4.25"
Side: 4.5"
Nape: 4.5"
Weight: 2.27 oz. (64.4 g.)



Heather

Head size: Average
Construction: EnvyHair Mono Top, Lace Front, Hand-Tied Sides and Back
Color shown: Lighter Red
Front: 3.5"
Crown: 2.75"
Side: 2.5"
Nape: 1.5"
Weight: 1.87 oz. (53 g.)

NEW

ERICA's cascading layers were made to style multiple ways. And EnvyHair's™ unique heat-resistant blend of fibers gives you the same freedom to experiment as natural hair.

Erica

Head size: Average
Construction: EnvyHair Ear-to-Ear Lace Front, Mono Top, Wefted Sides and Back
Color shown: Amaretto Cream
Front: 7.5" - 9.5"
Crown: 7.5" - 9.5"
Side: 7.5" - 14"
Nape: 14"
Weight: 2.85 oz. (80.7 gr.)



“I love EnvyHair—and people can’t believe they’re wigs! I let everyone know and hope people begin to think of wearing wigs as just one more way to enhance your appearance.”

—Verified Buyer



Danielle

Head size: Average

Construction: EnvyHair Mono Top, Lace Front, Wefted Sides and Back

Color shown: Vanilla Butter

Front: 4"

Crown: 7.5"

Side: 8"

Nape: 8.75"

Weight: 4.22 oz. (119.5 g.)



Aria

Head size: Average

Construction: EnvyHair Capless

Color shown: Dark Blonde

Front: 4.5"

Crown: 3.75"

Side: 3.5"

Nape: 3.5"

Weight: 2.78 oz. (79 g.)

Tandi

Head size: Average
Construction: EnvyHair
Capless, Mono Crown
Color shown: Medium Grey
Front: 4"
Crown: 8"
Side: 5.5"
Nape: 2.25"
Weight: 3.56 oz. (101 g.)

JUST- TO-THE- CHIN IS IN!

Styled sharp and structured or straight-out-of-bed tousled—the versatility of chin-length looks makes them super-popular.

READY-TO-WEAR SYNTHETIC HAIR

Hand-Tied

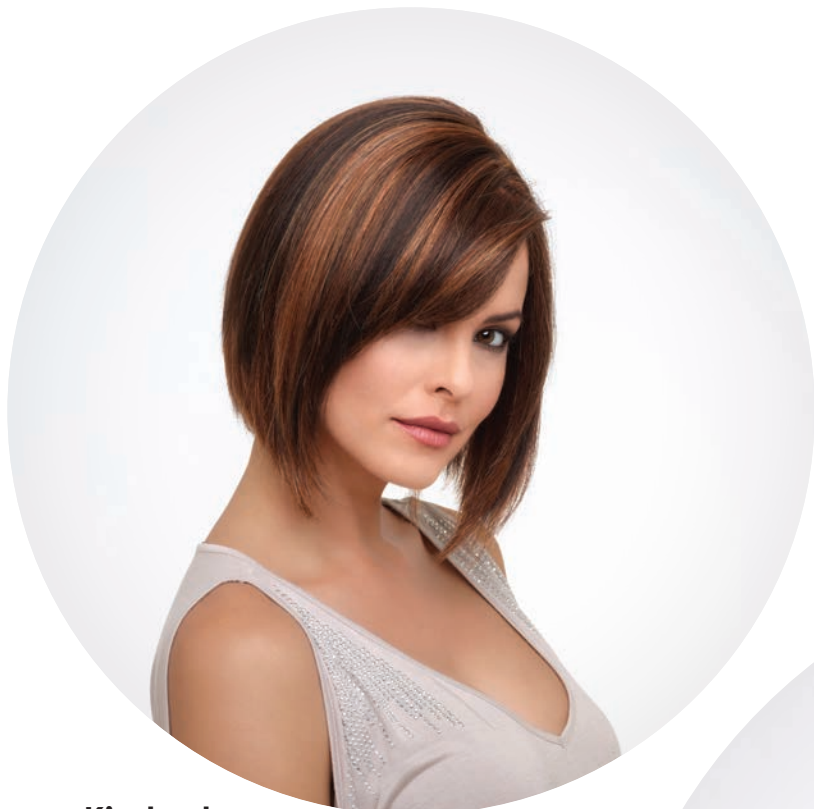
BREATHABLE. NATURAL. BEAUTIFUL.

Comfort doesn't have to mean dull. **ENVY's Hand-Tied Collection** allows a woman's natural beauty to shine through. Originally designed for women with hair loss or sensitive scalps, these fully hand-tied, Lace Front Mono Top styles feature a whisper-soft fit. Seamless caps are created from single-layer, ultra-fine mesh fabrics, making them feather light and breathable for ultimate comfort. And because they're so sheer, they give the illusion of natural hair growth, blending with any skin tone for stellar styling flexibility.

Tasha

Head size: Average
Construction: Hand-Tied
Color shown: Creamed Coffee
Front: 6.75"
Crown: 8"
Side: 5"
Nape: 2.5"
Weight: 2.4 oz. (68 g.)

“I was blown away by the comfort of the cap” is music to our ears—considering our fully hand-tied, Lace Front Mono Top styles were originally designed for sensitive scalps.



Kimberly

Head size: Average
Construction: Hand-Tied
Color shown: Chocolate Caramel
Front: 6"
Crown: 9"
Side: 7"
Nape: 3.5"
Weight: 2.96 oz. (84 g.)



Roxie

Head size: Average
Construction: Hand-Tied
Color shown: Dark Red
Front: 9"
Crown: 12"
Side: 7"
Nape: 11"
Weight: 3.9 oz. (110.5 g.)

READY-TO-WEAR SYNTHETIC HAIR

Lace Front Mono Top

24/7 HAIR.

With day-to-night versatility AND a super-comfortable cap that can be worn from early morning to the wee hours, these wigs are engineered for real life. And real style.

The natural looking hairline of our exclusive Lace Front design allows hair to be styled back from the face. While the unique technology of our Mono Top construction gives the look of a natural scalp. And thanks to their soft-as-a-breeze, breathable cap, **ENVY's Lace Front Mono Top** styles allow those with even the most sensitive scalps to experience the emotional and aesthetic benefits of wig-wearing.



Jeannie

Head size: Average
Construction: Lace Front Mono Top
Color shown: Lighter Red
Front: 2.25"
Crown: 3.25"
Side: 1.75"
Nape: 1.75"
Weight: 1.76 oz. (50 g.)



Micki

Head size: Average
Construction: Lace Front Mono Top
Color shown: Dark Blonde
Front: 5.25"
Crown: 4.25"
Side: 2.5"
Nape: 2.5"
Weight: 2.22 oz. (63 g.)

Brittaney

Head size: Average
Construction: Lace Front
Mono Top
Color shown: Lighter Red
Front: 10"
Crown: 11.5"
Side: 8.75"
Nape: 5.5"
Weight: 4.3 oz.
(122 g.)

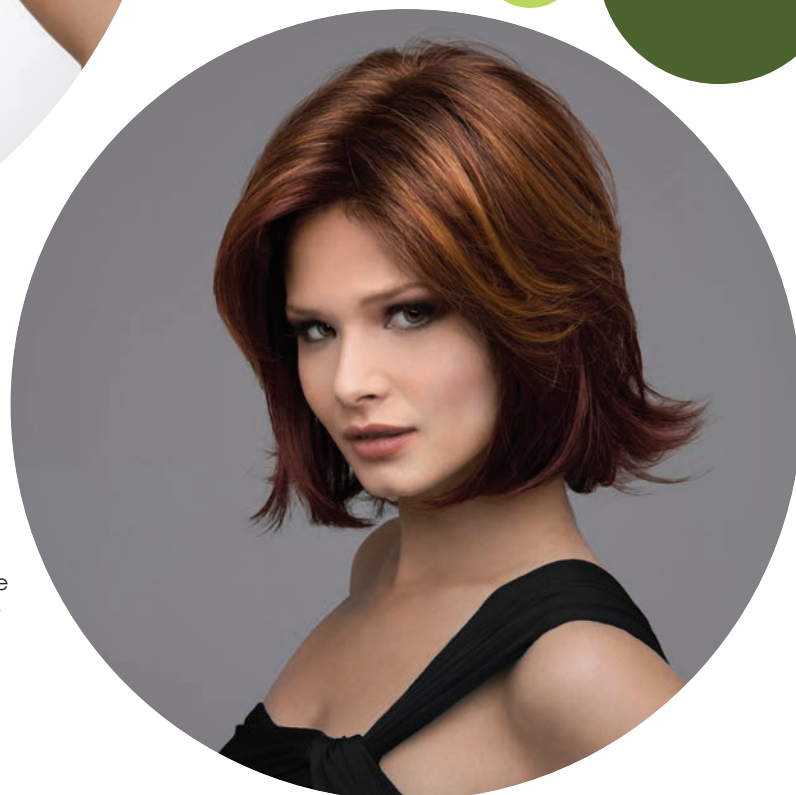


Maya

Head size: Average
Construction: Lace Front Mono Top
Color shown: Light Blonde
Front: 13.25"
Crown: 15"
Side: 14.75"
Nape: 13.75"
Weight: 5.12 oz. (145.2 g.)

READY-TO-WEAR STYLE YOU CAN MAKE YOUR OWN.

Featuring a pre-cut Lace Front, these styles were designed to “grab-off-the-stand” and go. And while they've been pre-styled to keep their shape in any weather—even after washing—the longer bangs and fringe can be trimmed by a stylist for a custom cut.



Rylee

Head size: Average
Construction: Lace Front Mono Top
Color shown: Toasted Sesame
Front: 6.5"
Crown: 8"
Side: 6"
Nape: 8.5"
Weight: 3.46 oz. (98 g.)

Taylor

Head size: Average
Construction: Lace Front Mono Top
Color shown: Cinnamon Raisin
Front: 5.5"
Crown: 8"
Side: 6.75"
Nape: 6.25"
Weight: 3.48 oz. (98.5 g.)

Bobbi

Head size: Average
Construction: Lace Front
Mono Top
Color shown: Mocha Frost
Front: 7"
Crown: 12.5"
Side: 11.75"
Nape: 12.75"
Weight: 4.72 oz. (134 g.)



Brooke

Head size: Large
Construction: Lace Front
Mono Top
Color shown: Medium Blonde
Front: 5.75"
Crown: 11.5"
Side: 11"
Nape: 14"
Weight: 5.15 oz.
(146 g.)



Lace Front
Mono Top

READY-TO-WEAR SYNTHETIC HAIR

OUT-OF-THE-BOX BEAUTIFUL.

ENVY's extra thin, 100% hand-stitched front lace line offers a natural, customized fit— with no trimming needed!



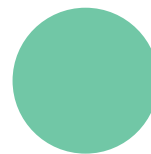
Delaney

Head size: Average
Construction: Lace Front
Mono Top
Color shown: Creamed Coffee
Front: 4.75"
Crown: 5.5"
Side: 5.75"
Nape: 2.5"
Weight: 2.5 oz. (71 g.)



Angie

Head size: Average
Construction: Lace Front
Mono Top
Color shown: Dark Red
Front: 7"
Crown: 5"
Side: 6.25"
Nape: 3.25"
Weight: 2.2 oz. (62.5 g.)



2 TRENDS IN 1!

With flipped-end bobs AND chin-length locks (worn sleek or tousled) looking ultra-modern, ANGIE gives you confidence to spare.

Tina

Head size: Average

Construction: Lace Front
Mono Top

Color shown: Vanilla Butter

Front: 3"

Crown: 4.75"

Side: 2.25"

Nape: 1.75"

Weight: 2.01 oz. (57 g.)



Sheena

Head size: Average

Construction: Lace Front
Mono Top

Color shown: Chocolate
Caramel

Front: 7.75"

Crown: 9"

Side: 13"

Nape: 15.5"

Weight: 6.0 oz. (170 g.)

Brianna

Head size: Average

Construction: Lace
Front Mono Top

Color shown:
Chocolate
Caramel

Front: 7.75"

Crown: 14.25"

Side: 15.5"

Nape: 17.75"

Weight: 6.0 oz. (170 g.)



READY-TO-WEAR SYNTHETIC HAIR

Lace Front Mono Part

Tinsley

Head size: Average
Construction: Lace Front Mono Part
Color shown: Chocolate Caramel
Front: 7
Crown: 4.75"
Side: 4.5"
Nape: 1.5"
Weight: 2.33 oz. (66 g.)



Coco

Head size: Average
Construction: Lace Front
Mono Part
Color shown: Medium Blonde
Front: 8.75"
Crown: 9.25"
Side: 7.25"
Nape: 3.75"
Weight: 3.25 oz. (92 g.)



FOR EVERY PART YOU PLAY.

Our **Lace Front Mono Part** styles offer the same comfort and stylability you've come to expect in our Lace Front Mono Top collection. The realistic appearance of our Lace Front technology ensures you'll never worry about those wispy bits at the hairline—no matter how you wear it. Hand-tied at top for the most natural looking part, these styles let you strut your stuff with complete confidence.

Harmony

Head size: Average

Construction: Lace Front Mono Part

Color shown: Chocolate Caramel

Front: 4.5"

Crown: 12.5"

Side: 11"

Nape: 11"

Weight: 4.76 oz. (134.9 g.)

NEW

HARMONY's textured flowing waves were meant to be tossed... thanks to our Lace Front Mono Part construction that will never give away the secret that you're wearing a wig.



Lace Front Mono Part

READY-TO-WEAR SYNTHETIC HAIR

100% BEAUTIFUL.

ENVY ready-to-wear synthetic wigs are made with only the finest 100% Kanekalon® fiber—renowned for holding its shade, shine, and shape.



Belinda

Head size: Average
Construction: Lace Front Mono Part
Color shown: Cinnamon Raisin
Front: 8"
Crown: 14"
Side: 12.25"
Nape: 12"
Weight: 4.33 oz. (123 g.)



Eve

Head size: Average
Construction: Lace Front Mono Part
Color shown: Lighter Red
Front: 6.5"
Crown: 7.5"
Side: 5"
Nape: 1.5"
Weight: 2.85 oz. (80.7 g.)

NEW

LONDON's off-shoulder length delivers the classic chic one usually associates with a salon. A lace front and part so natural—it looks like you just came from one.

London

Head size: Average
Construction: Lace Front
Mono Part
Color shown: Ginger Cream
Front: 10.5"
Crown: 12"
Side: 6"
Nape: 2.25"
Weight: 4.01 oz. (113.7 g.)



Lace Front
Mono Part

READY-TO-WEAR SYNTHETIC HAIR

NEW

WENDI's long, luxurious locks and wispy bangs are sure to give any woman an instant boost—and the confidence to toss or tousle them, thanks to the mono-part construction that perfectly mimics real hair.

Wendi

Head size: Average
Construction: Lace Front Mono Part
Color shown: Ginger Cream
Front: 4.75"
Crown: 15"
Side: 19"
Nape: 20"
Weight: 6.50 oz. (202.6 g.)

“ENVY is my favorite wig. No one ever knows that I am wearing one.”

— Kristen, Verified Buyer

Harper

Head size: Average

Construction: Lace Front
Mono Part

Color shown: Light Blonde

Front: 5.5"

Crown: 8.5"

Side: 8.25"

Nape: 2"

Weight: 2.79 oz. (79 g.)



Ashley

Head size: Average

Construction: Lace Front Mono Part

Color shown: Light Blonde

Front: 7"

Crown: 8.25"

Side: 9.25"

Nape: 8.25"

Weight: 4.27 oz. (121 g.)

DO GENTLEMAN PREFER BLONDES?

We know women do! Many find “going blonde” makes them feel younger and more confident. And with most people having dark hair... a blonde wig is the perfect “get-noticed” accessory.



Juliet

Head size: Average
Construction: Lace Front Mono Part
Color shown: Light Blonde
Front: 7"
Crown: 6"
Side: 6.5"
Nape: 3"
Weight: 2.79 oz. (79 g.)



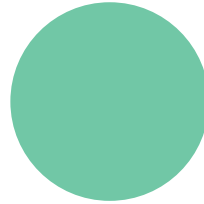
Carrisa

Head size: Average
Construction: Lace Front Mono Part
Color shown: Toasted Sesame
Front: 6.75"
Crown: 4.5"
Side: 3-5"
Nape: 1.5"
Weight: 2.12 oz. (60 g.)



Dakota

Head size: Average
Construction: Lace Front
Mono Part
Color shown: Medium Blonde
Front: 5.25"
Crown: 10"
Side: 8.75"
Nape: 8"
Weight: 3.33 oz. (94.3 g.)



Chloe

Head size: Average
Construction: Lace Front
Mono Part
Color shown: Light Blonde
Front: 9"
Crown: 10.5"
Side: 8.75"
Nape: 5.25"
Weight: 3.59 oz. (101.8 g.)

READY-TO-WEAR SYNTHETIC HAIR

Mono Top



FUN OR NECESSITY?

"While I've worn wigs off and on forever for fun," one customer told us, "I now wear them more out of necessity! And this ENVY wig is the best I've worn." Whatever your reason is for wearing one, our **Mono Top Collection** has the cuts, colors, and lengths you'll love.

The nearly invisible caps create the illusion of a natural scalp. And if you're looking to switch things up, most styles allow you to part them on the left, the right, in a zigzag, or down the middle. The sky's the limit... at a very down-to-earth price.



Gigi

Head size: Average
Construction: Mono Top
Color shown:
Almond Breeze
Front: 4.25"
Crown: 8"
Side: 9"
Nape: 9"
Weight: 4.8 oz. (136 g.)

Petite Tiffany

Head size: Petite
Construction: Mono Top
Color shown: Sparkling
Champagne
Front: 3.25"
Crown: 3.25"
Side: 2.25"
Nape: 2"
Weight: 1.76 oz. (50 g.)

GETTING TO THE ROOTS OF CONFIDENCE.

The more realistic the wig, the more assured women feel. And ENVY's darker roots with a medium base and highlights offer the multi-dimensional look of real hair.

Carley

Head size: Average
Construction:
Mono Top
Color shown: Light
Brown
Front: 4"
Crown: 11"
Side: 6.5"
Nape: 4"
Weight: 3.49 oz. (99 g.)

Haley

Head size: Average
Construction: Mono Top
Color shown:
Cinnamon Raisin
Front: 4.75"
Crown: 7.5"
Side: 4.75"
Nape: 4"
Weight: 2.83 oz.
(80.5 g.)



“Everyone loves my hair!”
is a constant refrain among
customers who are delighted
by the friends and family who
mistake their ENVY wig for their
real, natural hair.

Celeste

Head size: Large
Construction: Mono Top
Color shown: Light Blonde
Front: 5"
Crown: 8"
Side: 10.5"
Nape: 14.25"
Weight: 5.05 oz. (143 g.)

THE PERFECT PART.

While a few of our Mono Top styles are designed with a specific part in mind to preserve their style and overall density, most can be parted on the left, the right or down the middle and never reveal anything but great style.



Jo Anne

Head size: Average
Construction: Mono Top
Color shown: Creamed Coffee
Front: 3.75"
Crown: 5.75"
Side: 2.25"
Nape: 1.75"
Weight: 2.38 oz. (67.5 g.)

Savannah

Head size: Average
Construction: Mono Top
Color shown: Golden Nutmeg
Front: 5"
Crown: 5"
Side: 4"
Nape: 4"
Weight: 2.47 oz. (70 g.)





Madison

Head size: Average

Construction: Mono Top

Color shown: Almond Breeze

Front: 4.5"

Crown: 12.75"

Side: 8.25"

Nape: 11"

Weight: 3.95 oz. (112 g.)



WORDS OF WIGDOM

“Throughout my 20-year career, women’s comfort has always been top of mind,” says Alan, whose Stretch Cap Technology hugs the perimeter while eliminating pressure points for maximum comfort.



Marita

Head size: Average
Construction: Mono Top
Color shown: Frosted
Front: 3"
Crown: 3.5"
Side: 3"
Nape: 2"
Weight: 2.15 oz. (61 g.)



Jasmine

Head size: Average
Construction: Mono Top
Color shown: Cinnamon Raisin
Front: 3.5"
Crown: 8"
Side: 6"
Nape: 6"
Weight: 2.9 oz. (82 g.)



Kitana

Head size: Average
Construction: Mono Top
Color shown: Cinnamon Raisin
Front: 3.25"
Crown: 3.25"
Side: 2.25"
Nape: 2.25"
Weight: 1.76 oz. (50 g.)

READY-TO-WEAR SYNTHETIC HAIR

Mono Part



Kenya

Head size: Average
Construction: Mono Crown
Color shown: Lighter Red
Front: 8.25"
Crown: 7.5"
Side: 7"
Nape: 5.75"
Weight: 3.44 oz. (97.6 g.)

YOUR DAILY DOSE OF STYLE.

Once you discover the beauty of our **Mono Part Collection**, you'll never go back. The innovative tops are designed to look like your own scalp, and each strand is hand-tied to simulate natural hair growth from every angle. The cap is crafted of breathable material, hand-selected for its softness, making this style perfect for women with sensitive scalps.

With styles to flatter every face, you can don a bob on Monday, a lob on Tuesday, go straight Wednesday, curly Thursday, and show your sweet, swifty, sexy side every day.

Petite Paige

Head size: Petite
Construction: Mono Part
Color shown: Medium Blonde
Front: 4"
Crown: 11"
Side: 6.5"
Nape: 4"
Weight: 3.74 oz. (106 g.)



PETITE, PLEASE.

Confidence comes from the perfect fit. And with multiple styles offered in Petite, you'll never have to choose between style and comfort.

McKenzie

Head size: Average
Construction: Mono Part
Color shown: Black
Front: 5.5"
Crown: 14.5"
Side: 17.75"
Nape: 15.75"
Weight: 5.93 oz. (168 g.)

Kris

Head size: Average

Construction: Mono Part

Color shown: Medium

Brown

Front: 4"

Crown: 4"

Side: 1.75"

Nape: 1.5"

Weight: 2.36 oz. (67 g.)

“I wear my ENVY wig almost every day. I get up at dawn and don't have the energy to start styling my hair for work. It helps me look professional at all times.”

— Vicki L., Verified Buyer

Miley

Head size: Average
Construction: Mono Part
Color shown: Sparkling Champagne
Front: 4"
Crown: 4.5"
Side: 1.75"
Nape: 2"
Weight: 2.18 oz. (62 g.)



Leyla

Head size: Average
Construction: Mono Part
Color shown: Medium Brown
Front: 3.75"
Crown: 11.25"
Side: 8.25"
Nape: 11.25"
Weight: 3.77 oz. (107 g.)



Nadia

Head size: Average & Petite
Construction: Mono Part
Color shown: Golden Nutmeg
Front: 4.25"
Crown: 10"
Side: 10"
Nape: 10.75"
Weight: 4.3 oz. (122 g.)



WORDS OF WIGDOM

The secret to a perfectly natural look is a slightly imperfect part, says Alan. “Gently reposition strands along the part line or snip a few wispy pieces using manicure scissors—AND some restraint—for a slightly messy part that looks all your own.”

READY-TO-WEAR SYNTHETIC HAIR

Lace Front

Jade

Head size: Large

Construction: Lace Front

Color shown: Almond Breeze

Front: 8"

Crown: 8"

Side: 7.5"

Nape: 7.5"

Weight: 4.76 oz. (135 g.)



Alana

Head size: Average

Construction: Lace Front

Color shown: Mocha Frost

Front: 6.25"

Crown: 11.5"

Side: 8"

Nape: 11.5"

Weight: 4.87 oz. (138 g.)

THE UNBELIEVABLY REAL DEAL.

We believe every woman deserves gorgeous, touchable hair that can be tossed and tousled. And our Lace Front styles have the realistic hairlines to do it—right down to those baby hairs that frame the face.

Like more costly custom-made pieces, the graduated density of these styles begins with a finer appearance in the front, gently increasing as it reaches the crown. Part and style like natural hair, run your fingers through your bangs, and trust that your Lace Front style looks believable, beautiful, and enviable...naturally.

Raven

Head size: Average
Construction: Lace Front
Color shown: Dark Red
Front: 3.5"
Crown: 4.5"
Side: 2.25"
Nape: 2.25"
Weight: 2.15 oz. (61 g.)



READY-TO-WEAR SYNTHETIC HAIR

Open Top

AN OPEN AIR OF CONFIDENCE

What is it about looking good that makes you feel so good about yourself? Designed with style and comfort in mind, our **Open Top Collection** looks and feels fantastic. A delicate layer of gossamer lies softly against the scalp, allowing air to circulate freely. Petal-patterned netting adds stretch and support to every style and is dyed in a complementary shade to ensure complete coverage. Style to the left or the right. Step up the volume for a night on the town. And always step out in complete confidence.

Jolie

Head size: Average

Construction: Open Top

Color shown:

Toasted Sesame

Front: 5"

Crown: 11"

Side: 11"

Nape: 9"

Weight: 4.07 oz.
(126.6 g.)

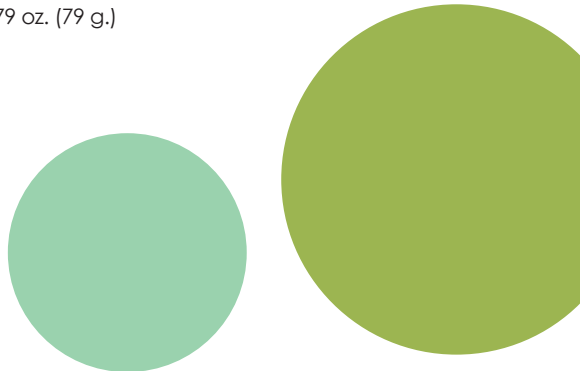
NEW

Available in all 25 of our multi-dimensional colors, JOLIE pairs wispy, "piece-y" bangs and a versatile shoulder-length for a laid-back look that suits women of every age.



Francesca

Head size: Average
Construction: Open Top
Color shown: Creamed Coffee
Front: 3.5"
Crown: 6.5"
Side: 6.5"
Nape: 3.5"
Weight: 2.79 oz. (79 g.)



Ivy

Head size: Average
Construction: Open Top
Color shown: Almond Breeze
Front: 3.25"
Crown: 2.75"
Side: 2"
Nape: 1.5"
Weight: 2.08 oz. (59 g.)



GO "QUEENS GAMBIT" RED!

Netflix's hit series about a cold-war era chess prodigy has launched a copper hair craze. While dyeing your hair the rich red demands touch-ups every four to six weeks, a wig lets you rock the heroine's look anytime (fade-free).



Penelope

Head size: Average & Petite
Construction: Open Top
Color shown: Lighter Red
Front: 2"
Crown: 2.5"
Side: 2"
Nape: 1.75"
Weight: 1.98 oz. (56 g.)



Mila

Head size: Average
Construction: Open Top
Color shown: Mocha Frost
Front: 4.5"
Crown: 6"
Side: 7"
Nape: 6"
Weight: 3.7 oz. (105 g.)

Gia

Head size: Average

Construction: Open Top

Color shown: Cinnamon Raisin

Front: 8"

Crown: 8.5"

Side: 6.5"

Nape: 3"

Weight: 3.17 oz. (89.6 g.)

NEW

Our textured bob, GIA is cool two ways—offering a breathable, open-top construction and on-trend chin-length bounce and sass.



“Best synthetic wig ever! I really care about my hair’s appearance and my ENVY wig can hold its own with any ‘real hair’ wig on the market.”

— Barbara G., Verified Buyer



Shari

Head size: Average & Large

Construction: Open Top

Color shown: Light Blonde

Front: 5"

Crown: 3.5"

Side: 2.25"

Nape: 1.75"

Weight: 2.25 oz. (64 g.)

**TOASTED
SESAME?
LIGHT BLONDE?**

Whichever shade you choose, our wigs' 100% Kanekalon® fibers promise to keep their color, shape, and shine.



Bryn

Head size: Average
Construction: Open Top
Color shown: Lighter Red
Front: 4.5"
Crown: 3"
Side: 3.25"
Nape: 2"
Weight: 2.4 oz. (68 g.)



Victoria

Head size: Average
Construction: Open Top
Color shown: Toasted Sesame
Front: 4.5"
Crown: 3.25"
Side: 3.25"
Nape: 2.75"
Weight: 2.08 oz. (59 g.)

SHORT CUTS TO STYLE.

With teasing at the root for natural lift, ENVY's short styles are designed to be versatile. Feathered layers can be styled sleek or spiky, while fringe framing the hairline lets you comb the hair towards the face or away from it.



Chantel

Head size: Average
Construction: Open Top
Color shown: Frosted
Front: 6.25"
Crown: 4.5"
Side: 5.25"
Nape: 2.5"
Weight: 2.33 oz. (66 g.)

Alyssa

Head size: Average & Petite
Construction: Open Top
Color shown: Golden Nutmeg
Front: 4.25"
Crown: 4"
Side: 3.5"
Nape: 3.5"
Weight: 2.4 oz. (68 g.)



WOW

WORDS OF WIGDOM

For first-time wig wearers, "the trick is to stay close to the color of your eyebrows," notes Alan. If not, "then consider dyeing your eyebrows to match your chosen wig color."

Jamie

Head size: Average
Construction: Open Top
Color shown: Ginger Cream
Front: 3.5"
Crown: 2.75"
Side: 1.5"
Nape: 1.75"
Weight: 2.12 oz. (60 g.)



Tiffany

Head size: Average & Large
Construction: Open Top
Color shown: Sparkling Champagne
Front: 3.25"
Crown: 3.25"
Side: 2.25"
Nape: 2"
Weight: 1.76 oz. (50 g.)



Jacqueline

Head size: Average & Petite
Construction: Open Top
Color shown: Toasted Sesame
Front: 2.75"
Crown: 2.75"
Side: 2.5"
Nape: 1.75"
Weight: 1.94 oz. (55 g.)

Bianca

Head size: Average
Construction: Open Top
Color shown: Sparkling
Champagne
Front: 7.75"
Crown: 8.5"
Side: 8.25"
Nape: 5.5"
Weight: 3.33 oz. (94.4 g.)

CUSTOMIZABLE STYLE.

Few people know that wigs can be styled just like natural hair—and that most hairstylists are happy to give your wig a custom cut. Trimming bangs and shaping to your exact specifications can help make your wig indiscernible from your own natural hair.



Sheila

Head size: Average
Construction: Open Top
Color shown: Dark Blonde
Front: 4.5"
Crown: 7.5"
Side: 4.75"
Nape: 4"
Weight: 3.1 oz. (88 g.)

Kaitlyn

Head size: Average
Construction: Open Top
Color shown: Dark Red
Front: 3.25"
Crown: 4.25"
Side: 1.75"
Nape: 1.75"
Weight: 2.43 oz. (69 g.)



Angel

Head size: Average
Construction: Open Top
Color shown: Light Blonde
Front: 4.75"
Crown: 4"
Side: 3"
Nape: 2"
Weight: 2.15 oz. (61 g.)

Kelsey

Head size: Average
Construction: Open Top
Color shown: Ginger Cream
Front: 11"
Crown: 8.25"
Side: 4.5"
Nape: 1.75"
Weight: 3.10 oz. (88 g.)



Scarlett

Head size: Average & Petite
Construction: Open Top
Color shown: Sparkling Champagne
Front: 3"
Crown: 7.75"
Side: 5.75"
Nape: 2.5"
Weight: 3.1 oz. (88 g.)



Elle

Head size: Average
Construction: Open Top
Color shown: Chocolate Cherry
Front: 4"
Crown: 5.5"
Side: 3.25"
Nape: 3"
Weight: 2.33 oz. (66 g.)

“Great right out of the box! I love ELLE. My previous one was aging from too much love and tons of usage. My next one is just as great! People ask me for my stylist... I say it’s ELLE!”

— Maryanne R., Verified Buyer

100% KANEKALON® FIBER

Toppers

BETTER-THAN-GOOD HAIR DAYS.

ENVY Toppers add lush volume and coverage where hair extensions can't reach. Offering 5 styles made with 100% Kanekalon® fiber, and featuring a monofilament construction for more natural movement, our Toppers are designed to be a go-to solution for the growing numbers affected by hair loss.



Wedge Topper

Construction: Lace Front

Mono Top

Color shown:

Medium Blonde

Front: 3.75"

Crown: 4.75"

Side: 5"

Nape: 5"

Weight: 1.59 oz. (45 g.)

BEFORE | AFTER





Bob Topper

Construction: Lace
 Front Mono Top
Color shown:
 Toasted Sesame
Front: 5.75"
Crown: 8.75"
Side: 7.5"
Nape: 8.5"
Weight: 1.55 oz. (44 g.)



Long Topper

Construction: Lace
 Front Mono Top
Color shown:
 Medium Brown
Front: 7.5" - 15"
Crown: 11"
Side: 13.75"
Nape: 14.75"
Weight: 3.62 oz. (105 g.)



Spiky Topper

Construction: Open Top
Color shown: Dark Grey
Front: 3.5"
Crown: 3"
Side: 2.25"
Nape: 2.75"
Weight: 1.06 oz. (30 g.)



Layered Topper

Construction:
 Open Top
Color shown:
 Light Blonde
Front: 4.38"
Crown: 4.87"
Side: 3.5"
Nape: 3.5"
Weight: 1.13 oz. (32 g.)

15 NATURAL-LOOKING COLORATIONS

Black, Cinnamon Raisin, Dark Blonde, Dark Brown, Dark Grey, Frosted, Light Blonde, Light Brown, Light Grey, Medium Blonde, Medium Brown, Medium Grey, Mocha Frost, Sparkling Champagne and Toasted Sesame

100% HUMAN HAIR &
HUMAN/SYNTHETIC HAIR BLENDS

Add-Ons

Center

Front: 12"
Color shown:
Frosted
Base: 4.5" x 4"
Weight: 1.34 oz.
(38 g.)

YOUR ALL-IN-ONE FULLNESS FIX.

Whether looking to add body and coverage to fine or thinning hair, or just some extra "oomph," **ENVY's Add-Ons** can be trimmed to blend seamlessly into any hairstyle.

To achieve invisible coverage, position Add-On using its pressure-sensitive clips—tucking edges beneath your natural tresses—then apply volumizing powder or dry shampoo at your hair's roots and fluff to blend edges further.

AVAILABLE COLORS

Black, Dark Blonde, Dark Brown, Dark Grey, Frosted, Light Blonde, Light Grey, Medium Blonde, Medium Brown, Medium Grey



Crown

Front: 12"
Color shown:
Dark Blonde
Base: 4" x 4"
Weight: 1.0 oz. (28.4 g.)

Top

Front: 12"
Color shown:
Light Blonde
Base: 5.75" x 5"
Weight: 2.1 oz. (59.5 g.)





Left

Front: 12"
Color shown:
Medium Brown
Base: 4.5" x 4.25"
Weight: 1.43 oz. (40.5 g.)



Part

Front: 12"
Color shown:
Dark Brown
Base: 4.5" x 2.5"
Weight: 1.08 oz. (30.6 g.)



Front

Front: 12"
Color shown:
Dark Blonde
Base: 3.5" x 4.5"
Weight: 1.34 oz. (38 g.)

ACCESSORIES

ENVY Wig Care

Our full line of accessories is designed to help your customers care for their hair—and to help YOU care for your customers.



Renu and Repair



Hair Detox



Wig Brush



Wig Comb



Beauty Balm



4 Piece Travel Size Liquids



Human Hair Liquids Kit

ACCESSORIES

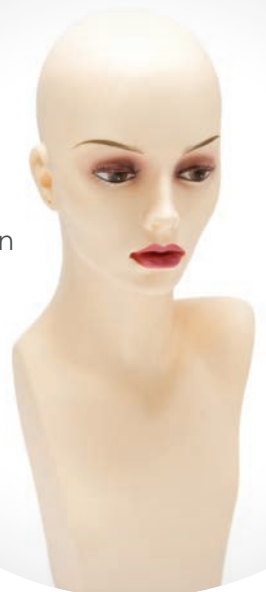
ENVY Customer Care

From color wheels, wig stands, and promotional items, to comprehensive education, and custom merchandising, ENVY stands by its customers as passionately as its products.

Fish Net Cap Liner



Mannequin



Turban



Nylon Cap Liner



Wig Stand



Color Ring



EnvyHair™
Color Ring

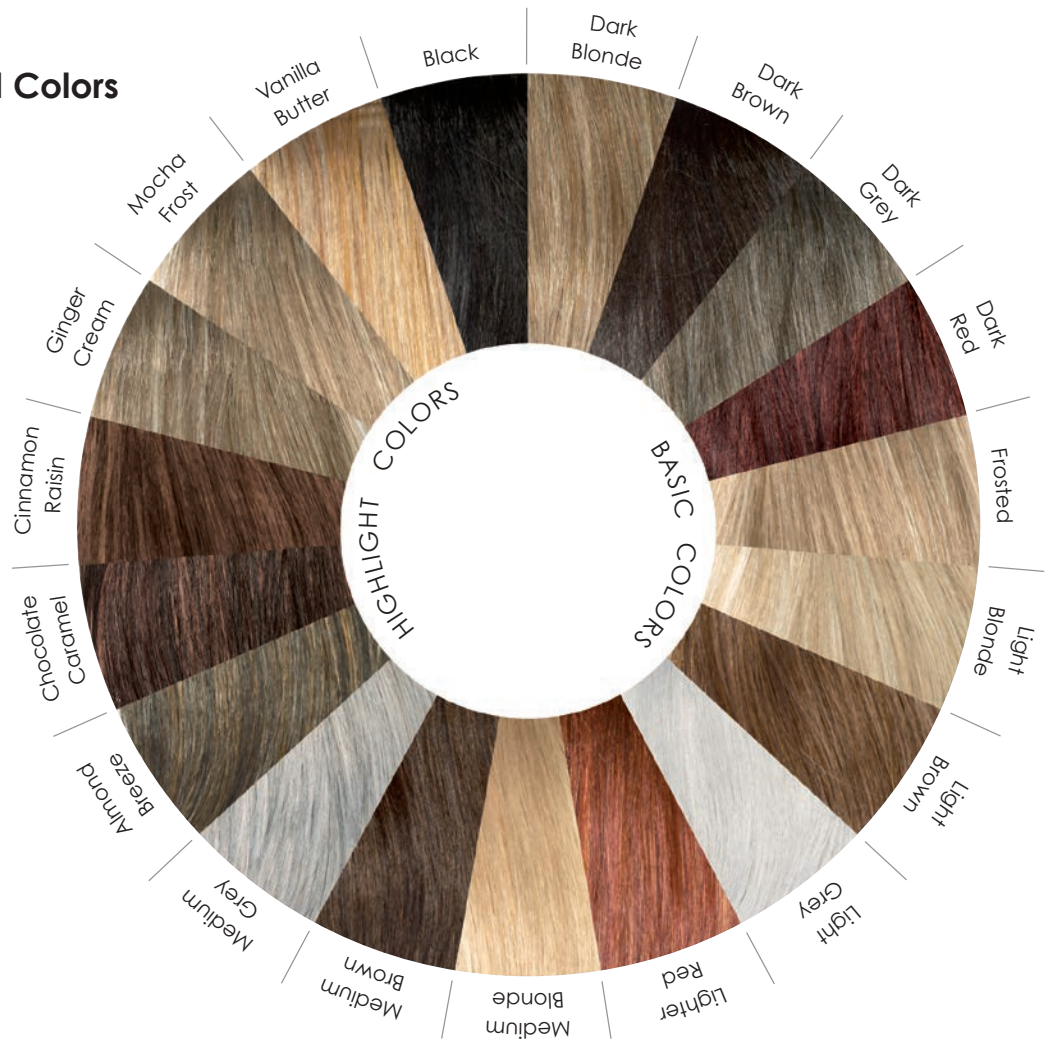


ENVY Colors

25 EXCLUSIVE, MULTI-DIMENSIONAL COLORATIONS

Created with the latest tone-on-tone blending techniques, ENVY wigs are made with only the finest 100% Kanekalon® fiber—a superior quality product renowned for holding its shade, shine, and shape. Our Human Hair wigs and Hair Add-Ons are made of 100% human hair (the lightest tones have synthetic strands blended in to achieve the most natural-looking colorations).

Basic & Highlighted Colors



ROOTED IN REALITY.

ENVY's "Rooted" colorations—darker roots with a medium base and highlights—offer the multi-dimensional look of real, salon-worthy hair.

Rooted Colors



Amaretto Cream



Chocolate Cherry



Creamed Coffee



Golden Nutmeg



Sparkling Champagne



Toasted Sesame

Color Index

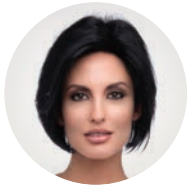
	BASIC											HIGHLIGHTED					ROOTED								
	Black	Dark Blonde	Dark Brown	Dark Grey	Dark Red	Frosted	Light Blonde	Light Brown	Light Grey	Lighter Red	Medium Blonde	Medium Brown	Medium Grey	Almond Breeze	Chocolate Caramel	Cinnamon Raisin	Ginger Cream	Mocha Frost	Vanilla Butter	Amaretto & Cream	Chocolate Cherry	Creamed Coffee	Golden Nutmeg	Sparkling Champagne	Toasted Sesame
Abbey, 11	●	●	●	●	●	●	●	●	●	●	●	●	●	●	●	●	●	●	●	●	●	●	●	●	●
Alana, 50	●	●	●	●	●	●	●	●	●	●	●	●	●	●	●	●	●	●	●	●	●	●	●	●	●
Alyssa, 58	●	●	●	●	●	●	●	●	●	●	●	●	●	●	●	●	●	●	●	●	●	●	●	●	●
Amelia, 5		●	●		●	●				●	●	●				●							●		
Angel, 62	●	●	●	●	●	●	●	●	●	●	●	●	●	●	●	●	●	●	●	●	●	●	●	●	●
Angie, 30	●	●	●	●	●	●	●	●	●	●	●	●	●	●	●	●	●	●	●	●	●	●	●	●	●
Aria, 22	●	●	●	●	●	●	●	●	●	●	●	●	●	●	●	●	●	●	●	●	●	●	●	●	●
Ashley, 37	●	●	●		●	●	●	●		●	●	●		●	●	●	●	●	●		●	●	●	●	●
Aubrey, 17	●	●	●	●	●	●	●	●	●	●	●	●	●	●	●	●	●	●	●	●	●	●	●	●	●
Ava, 12	●	●	●	●	●	●	●	●	●	●	●	●	●	●	●	●	●	●	●	●	●	●	●	●	●
Belinda, 34	●	●	●	●	●	●	●	●	●	●	●	●	●	●	●	●	●	●	●	●	●	●	●	●	●
Bianca, 60	●	●	●	●	●	●	●	●	●	●	●	●	●	●	●	●	●	●	●	●	●	●	●	●	●
Bobbi, 29	●	●	●		●	●	●	●		●	●	●		●	●	●	●	●	●		●	●	●	●	●
Bianna, 31	●	●	●		●	●	●	●		●	●	●		●	●	●	●	●	●		●	●	●	●	●
Brittany, 27	●	●	●	●	●	●	●	●	●	●	●	●	●	●	●	●	●	●	●	●	●	●	●	●	●
Brooke, 29	●	●	●	●	●	●	●	●	●	●	●	●	●	●	●	●	●	●	●	●	●	●	●	●	●
Bryn, 57	●	●	●	●	●	●	●	●	●	●	●	●	●	●	●	●	●	●	●	●	●	●	●	●	●
Carley, 41	●	●	●	●	●	●	●	●	●	●	●	●	●	●	●	●	●	●	●	●	●	●	●	●	●
Carrisa, 38	●	●	●	●	●	●	●	●	●	●	●	●	●	●	●	●	●	●	●	●	●	●	●	●	●
Celeste, 42	●	●	●	●	●	●	●	●	●	●	●	●	●	●	●	●	●	●	●	●	●	●	●	●	●
Chantel, 58	●	●	●	●	●	●	●	●	●	●	●	●	●	●	●	●	●	●	●	●	●	●	●	●	●
Chelsea, 16	●	●	●	●	●	●	●	●	●	●	●	●	●	●	●	●	●	●	●	●	●	●	●	●	●
Chloe, 39	●	●	●	●	●	●	●	●	●	●	●	●	●	●	●	●	●	●	●	●	●	●	●	●	●
Coco, 32	●	●	●	●	●	●	●	●	●	●	●	●	●	●	●	●	●	●	●	●	●	●	●	●	●
Cofi, 20	●	●	●	●	●	●	●	●	●	●	●	●	●	●	●	●	●	●	●	●	●	●	●	●	●
Dakota, 39	●	●	●	●	●	●	●	●	●	●	●	●	●	●	●	●	●	●	●	●	●	●	●	●	●
Danielle, 22	●	●	●		●	●	●	●		●	●	●		●	●	●	●	●	●		●	●	●	●	●
Delaney, 30	●	●	●	●	●	●	●	●	●	●	●	●	●	●	●	●	●	●	●	●	●	●	●	●	●
Destiny, 8	●	●	●	●	●	●	●	●	●	●	●	●	●	●	●	●	●	●	●	●	●	●	●	●	●
Elle, 63	●	●	●	●	●	●	●	●	●	●	●	●	●	●	●	●	●	●	●	●	●	●	●	●	●
Emma, 13	●	●	●	●	●	●	●	●	●	●	●	●	●	●	●	●	●	●	●	●	●	●	●	●	●
Erica, 21	●	●	●		●	●	●	●		●	●	●		●	●	●	●	●	●		●	●	●	●	●
Eve, 34	●	●	●	●	●	●	●	●	●	●	●	●	●	●	●	●	●	●	●	●	●	●	●	●	●
Fiona, 15	●	●	●	●	●	●	●	●	●	●	●	●	●	●	●	●	●	●	●	●	●	●	●	●	●
Flame, 18	●	●	●	●	●	●	●	●	●	●	●	●	●	●	●	●	●	●	●	●	●	●	●	●	●

Color Index

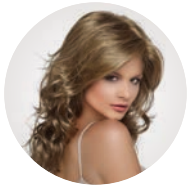
	BASIC	Black	Dark Blonde	Dark Brown	Dark Grey	Dark Red	Frosted	Light Blonde	Light Brown	Light Grey	Lighter Red	Medium Blonde	Medium Brown	Medium Grey	HIGHLIGHTED	Almond Breeze	Chocolate Caramel	Cinnamon Raisin	Ginger Cream	Mocha Frost	Vanilla Butter	ROOTED	Amaretto & Cream	Chocolate Cherry	Creamed Coffee	Golden Nutmeg	Sparkling Champagne	Toasted Sesame
Francesca, 53		●	●	●	●	●	●	●	●	●	●	●	●	●		●	●	●	●	●	●		●	●	●	●	●	●
Gia, 55		●	●	●	●	●	●	●	●	●	●	●	●	●		●	●	●	●	●	●		●	●	●	●	●	●
Gigi, 40		●	●	●	●	●	●	●	●	●	●	●	●	●		●	●	●	●	●	●		●	●	●	●	●	●
Grace, 16		●	●	●	●	●	●	●	●	●	●	●	●	●		●	●	●	●	●	●		●	●	●	●	●	●
Haley, 42		●	●	●	●	●	●	●	●	●	●	●	●	●		●	●	●	●	●	●		●	●	●	●	●	●
Hannah, 4			●	●		●	●				●	●	●				●									●		
Harmony, 33		●	●	●	●	●	●	●	●	●	●	●	●	●		●	●	●	●	●	●		●	●	●	●	●	●
Harper, 37		●	●	●	●	●	●	●	●	●	●	●	●	●		●	●	●	●	●	●		●	●	●	●	●	●
Heather, 20		●	●	●	●	●	●	●	●	●	●	●	●	●		●	●	●	●	●	●		●	●	●	●	●	●
Isabella, 10		●	●	●	●	●	●	●	●	●	●	●	●	●		●	●	●	●	●	●		●	●	●	●	●	●
Ivy, 53		●	●	●	●	●	●	●	●	●	●	●	●	●		●	●	●	●	●	●		●	●	●	●	●	●
Jacqueline, 60		●	●	●	●	●	●	●	●	●	●	●	●	●		●	●	●	●	●	●		●	●	●	●	●	●
Jade, 50		●	●	●	●	●	●	●	●	●	●	●	●	●		●	●	●	●	●	●		●	●	●	●	●	●
Jamie, 59		●	●	●	●	●	●	●	●	●	●	●	●	●		●	●	●	●	●	●		●	●	●	●	●	●
Jasmine, 45		●	●	●	●	●	●	●	●	●	●	●	●	●		●	●	●	●	●	●		●	●	●	●	●	●
Jeannie, 26		●	●	●	●	●	●	●	●	●	●	●	●	●		●	●	●	●	●	●		●	●	●	●	●	●
Jo Anne, 43		●	●	●	●	●	●	●	●	●	●	●	●	●		●	●	●	●	●	●		●	●	●	●	●	●
Jolie, 52		●	●	●	●	●	●	●	●	●	●	●	●	●		●	●	●	●	●	●		●	●	●	●	●	●
Jordan, 6		●	●	●	●	●	●	●	●	●	●	●	●	●		●	●	●	●	●	●		●	●	●	●	●	●
Juliet, 38		●	●	●	●	●	●	●	●	●	●	●	●	●		●	●	●	●	●	●		●	●	●	●	●	●
Kaitlyn, 61		●	●	●	●	●	●	●	●	●	●	●	●	●		●	●	●	●	●	●		●	●	●	●	●	●
Kelsey, 62		●	●	●	●	●	●	●	●	●	●	●	●	●		●	●	●	●	●	●		●	●	●	●	●	●
Kenya, 46		●	●	●	●	●	●	●	●	●	●	●	●	●		●	●	●	●	●	●		●	●	●	●	●	●
Kimberly, 25		●	●	●		●	●	●		●	●	●	●			●	●	●	●	●	●		●	●	●	●	●	●
Kitana, 45		●	●	●		●	●	●		●	●	●	●			●	●	●	●	●	●		●	●	●	●	●	●
Kris, 48		●	●	●	●	●	●	●	●	●	●	●	●	●		●	●	●	●	●	●		●	●	●	●	●	●
Krista, 9		●	●	●		●	●	●		●	●	●	●			●	●	●	●	●	●		●	●	●	●	●	●
Kylie, 15		●	●	●	●	●	●	●	●	●	●	●	●	●		●	●	●	●	●	●		●	●	●	●	●	●
Leyla, 49		●	●	●		●	●	●		●	●	●	●			●	●	●	●	●	●		●	●	●	●	●	●
London, 35		●	●	●	●	●	●	●	●	●	●	●	●	●		●	●	●	●	●	●		●	●	●	●	●	●
Lynsey, 8		●	●	●		●	●	●		●	●	●	●			●	●	●	●	●	●		●	●	●	●	●	●
Madison, 44		●	●	●		●	●	●		●	●	●	●			●	●	●	●	●	●		●	●	●	●	●	●
Marita, 45		●	●	●	●	●	●	●	●	●	●	●	●	●		●	●	●	●	●	●		●	●	●	●	●	●
Maya, 27		●	●	●		●	●	●		●	●	●	●			●	●	●	●	●	●		●	●	●	●	●	●
McKenzie, 47		●	●	●		●	●	●		●	●	●	●			●	●	●	●	●	●		●	●	●	●	●	●

	BASIC	Black	Dark Blonde	Dark Brown	Dark Grey	Dark Red	Frosted	Light Blonde	Light Brown	Light Grey	Lighter Red	Medium Blonde	Medium Brown	Medium Grey	HIGHLIGHTED	Almond Breeze	Chocolate Caramel	Cinnamon Raisin	Ginger Cream	Mocha Frost	Vanilla Butter	ROOTED	Amaretto & Cream	Chocolate Cherry	Creamed Coffee	Golden Nutmeg	Sparkling Champagne	Toasted Sesame
Micki, 26		●	●	●	●	●	●	●	●	●	●	●	●	●		●	●	●	●	●	●		●	●	●	●	●	●
Mila, 54		●	●	●	●	●	●	●	●	●	●	●	●	●		●	●	●	●	●	●		●	●	●	●	●	●
Miley, 49		●	●	●	●	●	●	●	●	●	●	●	●	●		●	●	●	●	●	●		●	●	●	●	●	●
Nadia, 49		●	●	●	●	●	●	●	●	●	●	●	●	●		●	●	●	●	●	●		●	●	●	●	●	●
Olivia, 14		●	●	●	●	●	●	●	●	●	●	●	●	●		●	●	●	●	●	●		●	●	●	●	●	●
Ophelia, 10		●	●	●	●	●	●	●	●	●	●	●	●	●		●	●	●	●	●	●		●	●	●	●	●	●
Penelope, 54		●	●	●	●	●	●	●	●	●	●	●	●	●		●	●	●	●	●	●		●	●	●	●	●	●
Pt., Paige, 47		●	●	●	●	●	●	●	●	●	●	●	●	●		●	●	●	●	●	●		●	●	●	●	●	●
Pt. Tiffany, 40		●	●	●	●	●	●	●	●	●	●	●	●	●		●	●	●	●	●	●		●	●	●	●	●	●
Raven, 51		●	●	●	●	●	●	●	●	●	●	●	●	●		●	●	●	●	●	●		●	●	●	●	●	●
Roxie, 25		●	●	●	●	●	●	●	●	●	●	●	●	●		●	●	●	●	●	●		●	●	●	●	●	●
Rylee, 28		●	●	●	●	●	●	●	●	●	●	●	●	●		●	●	●	●	●	●		●	●	●	●	●	●
Savannah, 43		●	●	●	●	●	●	●	●	●	●	●	●	●		●	●	●	●	●	●		●	●	●	●	●	●
Scarlett, 63		●	●	●	●	●	●	●	●	●	●	●	●	●		●	●	●	●	●	●		●	●	●	●	●	●
Selena, 18		●	●	●	●	●	●	●	●	●	●	●	●	●		●	●	●	●	●	●		●	●	●	●	●	●
Shari, 56		●	●	●	●	●	●	●	●	●	●	●	●	●		●	●	●	●	●	●		●	●	●	●	●	●
Sheena, 31		●	●	●	●	●	●	●	●	●	●	●	●	●		●	●	●	●	●	●		●	●	●	●	●	●
Sheila, 61		●	●	●	●	●	●	●	●	●	●	●	●	●		●	●	●	●	●	●		●	●	●	●	●	●
Shyla, 19		●	●	●	●	●	●	●	●	●	●	●	●	●		●	●	●	●	●	●		●	●	●	●	●	●
Sophia, 5			●	●		●	●				●	●	●				●										●	
Tandi, 23		●	●	●	●	●	●	●	●	●	●	●	●	●		●	●	●	●	●	●		●	●	●	●	●	●
Taryn, 11		●	●	●	●	●	●	●	●	●	●	●	●	●		●	●	●	●	●	●		●	●	●	●	●	●
Tasha, 24		●	●	●	●	●	●	●	●	●	●	●	●	●		●	●	●	●	●	●		●	●	●	●	●	●
Taylor, 28		●	●	●	●	●	●	●	●	●	●	●	●	●		●	●	●	●	●	●		●	●	●	●	●	●
Tiffany, 59		●	●	●	●	●	●	●	●	●	●	●	●	●		●	●	●	●	●	●		●	●	●	●	●	●
Tina, 31		●	●	●	●	●	●	●	●	●	●	●	●	●		●	●	●	●	●	●		●	●	●	●	●	●
Tinsley, 32		●	●	●	●	●	●	●	●	●	●	●	●	●		●	●	●	●	●	●		●	●	●	●	●	●
Veronica, 19		●	●	●	●	●	●	●	●	●	●	●	●	●		●	●	●	●	●	●		●	●	●	●	●	●
Victoria, 57		●	●	●	●	●	●	●	●	●	●	●	●	●		●	●	●	●	●	●		●	●	●	●	●	●
Wendi, 36		●	●	●	●	●	●	●	●	●	●	●	●	●		●	●	●	●	●	●		●	●	●	●	●	●
Whitney, 7		●	●	●	●	●	●	●	●	●	●	●	●	●		●	●	●	●	●	●		●	●	●	●	●	●
Yuri, 12		●	●	●	●	●	●	●	●	●	●	●	●	●		●	●	●	●	●	●		●	●	●	●	●	●
Zoey, 7		●	●	●	●	●	●	●	●	●	●	●	●	●		●	●	●	●	●	●		●	●	●	●	●	●

Style Index



Abbey, 11



Alana, 50



Alyssa, 58



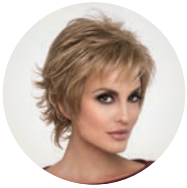
Amelia, 5



Angel, 62



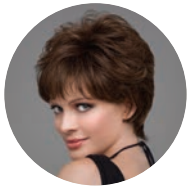
Angie, 30



Aria, 22



Ashley, 37



Aubrey, 17



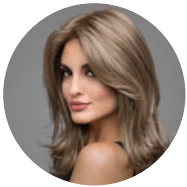
Ava, 12



Belinda, 34



Bianca, 60



Bobbi, 29



Brianna, 31



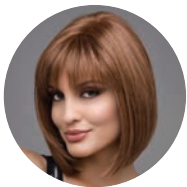
Brittaney, 27



Brooke, 29



Bryn, 57



Carley, 41



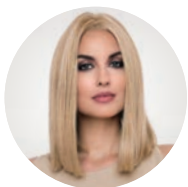
Carrisa, 38



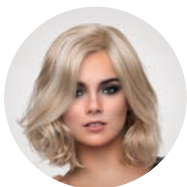
Celeste, 42



Chantel, 58



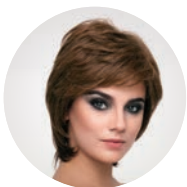
Chelsea, 16



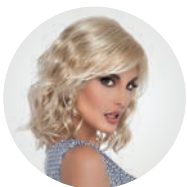
Chloe, 39



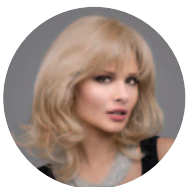
Coco, 32



Coti, 20



Dakota, 39



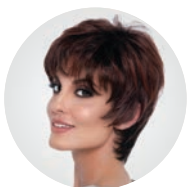
Danielle, 22



Delaney, 30



Destiny, 8



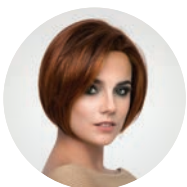
Elle, 63



Emma, 13



Erica, 21



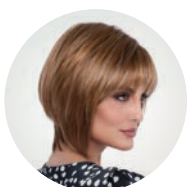
Eve, 34



Fiona, 15



Flame, 18



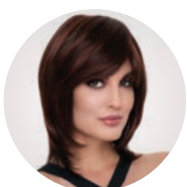
Francesca, 53



Gia, 55



Gigi, 40



Grace, 16



Haley, 42



Hannah, 4



Harmony, 33



Harper, 37



Heather, 20



Isabella, 10



Ivy, 53



Jacqueline, 60



Jade, 50



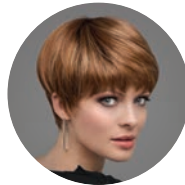
Jamie, 59



Jasmine, 45



Jeannie, 26



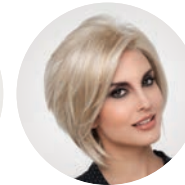
Jo Anne, 43



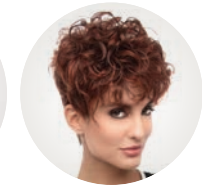
Jolie, 52



Jordan, 6



Juliet, 38



Kaitlyn, 61



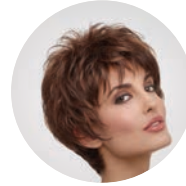
Kelsey, 62



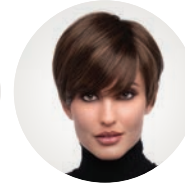
Kenya, 46



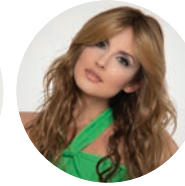
Kimberly, 25



Kitana, 45



Kris, 48



Krista, 9



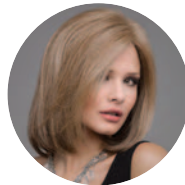
Kylie, 15



Leyla, 49



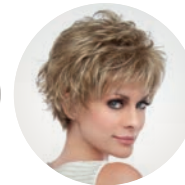
London, 35



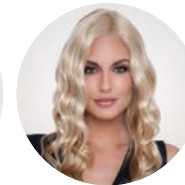
Lynsey, 8



Madison, 44



Marita, 45



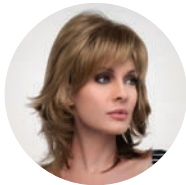
Maya, 27



McKenzie, 47



Micki, 26



Mila, 54



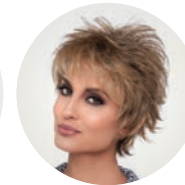
Miley, 49



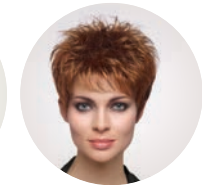
Nadia, 49



Olivia, 14



Ophelia, 10



Penelope, 54



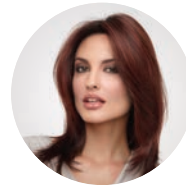
Pt., Paige, 47



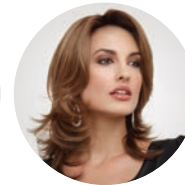
Pt. Tiffany, 40



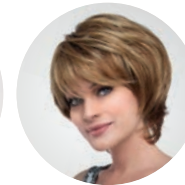
Raven, 51



Roxie, 25



Rylee, 28



Savannah, 43



Scarlett, 63



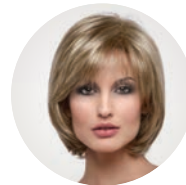
Selena, 18



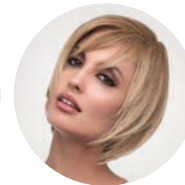
Shari, 56



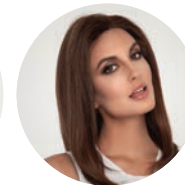
Sheena, 31



Sheila, 61



Shyla, 19



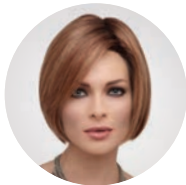
Sophia, 5



Tandi, 23



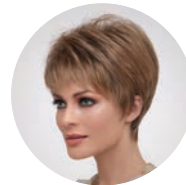
Taryn, 11



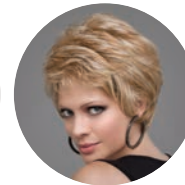
Tasha, 24



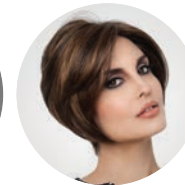
Taylor, 28



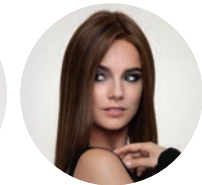
Tiffany, 59



Tina, 31



Tinsley, 32



Veronica, 19



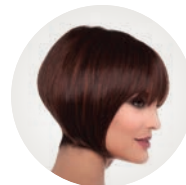
Victoria, 57



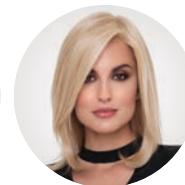
Wendi, 36



Whitney, 7



Yuri, 12



Zoey, 7

Envy[®]
By Alan Eaton
Wigs & Hair Add-Ons

1-877-906-6478

5292 East 65th Street
Indianapolis, IN 46220

www.EnvyWigs.com

All artwork, images and photography contained in this catalog, including the copyrights therein, are protected by law and may not be copied or reproduced in whole or in part without prior written permission from Envy Wigs and Hair Add-Ons.

